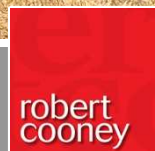




26 Warren Street Monkton Heathfield, Taunton TA2 8GZ

£265,000



Situated in this popular village location within 3 miles of the centre of town is this well presented South facing 3 bedroomed end-terraced house with enclosed garden to rear and driveway parking.





Features

- Entrance Hall
- Living Room
- Fitted Kitchen / Dining Room with door to garden
- Cloakroom
- Master Bedroom with Ensuite Shower Room
- 2 further Bedrooms
- Family Bathroom

- Enclosed garden to rear
- Driveway parking

- Gas central heating
- Double glazing
- NHBC Warranty - 5 years remaining
- Management charge £186.18 pa - reviewed December 2026

- Council tax band C

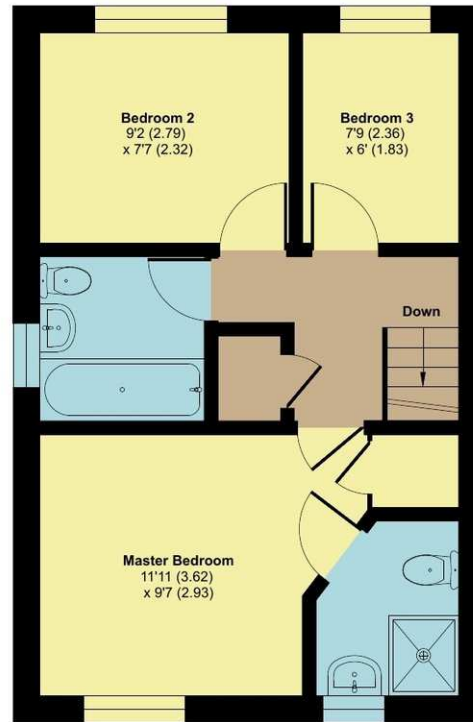
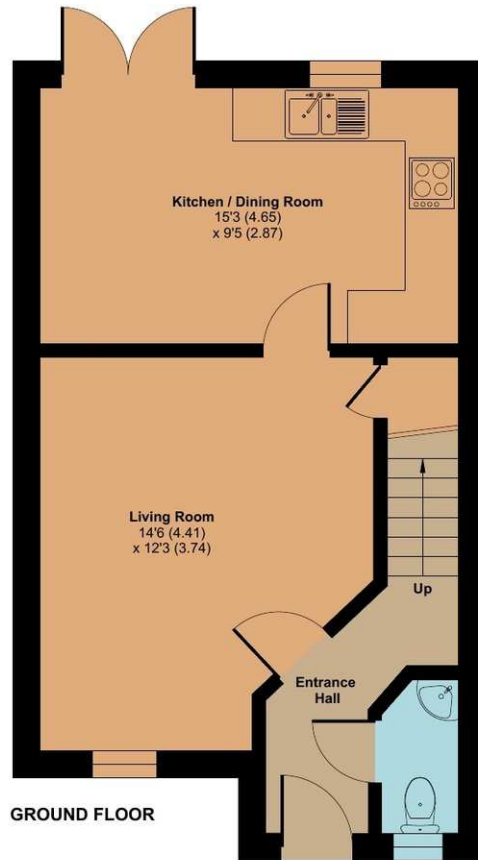
- What3words:
///jokes.delighted.caramel



26 Warren Street, Monkton Heathfield, Taunton, TA2 8GZ

Approximate Area = 772 sq ft / 71.7 sq m

For identification only - Not to scale



Floor plan produced in accordance with RICS Property Measurement 2nd Edition, Incorporating International Property Measurement Standards (IPMS2 Residential). © nichecom 2026. Produced for Robert Cooney. REF:



Viewing strictly through the selling agents:

Robert Cooney

Corporation Street, Taunton,
Somerset TA1 4AW

Telephone 01823 230 230

taunton@robertcooney.co.uk

www.robertcooney.co.uk



robert
cooney

For clarification, we wish to inform prospective purchasers that: these particulars are set out as a general outline only for the guidance of intended purchasers, and do not constitute, nor constitute part of, an offer or contract; all descriptions, dimensions, references to condition and necessary permission for use and occupation, and other details, are given without responsibility and any intending purchasers should not rely on them as statements or representation of fact, but must satisfy themselves by inspection or otherwise as to the correctness of each of them; no person in the employment of Robert Cooney has any authority to make or give any representation or warranty whatever in relation to this property; we have not carried out a detailed survey nor tested the services, appliances and specific fittings.