

Bridgewater Square, EC2Y

£3,250 Per calendar month

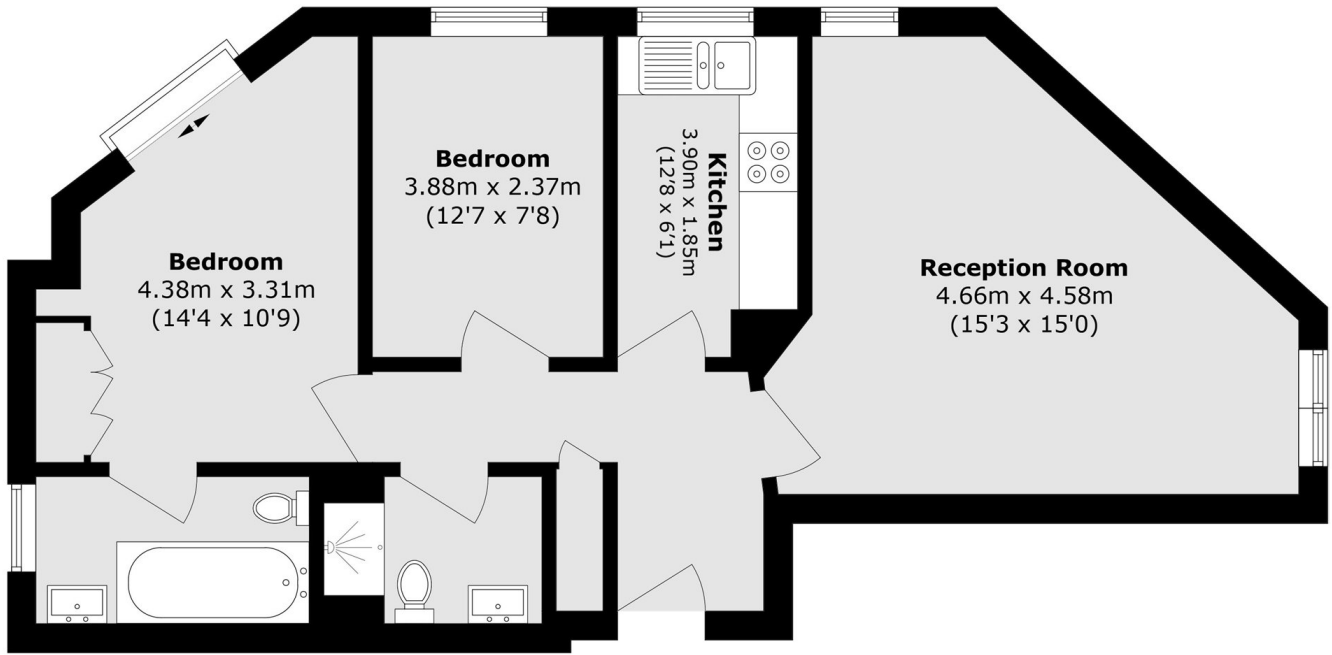
A two bedroom, two bathroom apartment in a quiet square in the heart of the City. With a separate kitchen, wooden floors throughout, triple aspect allowing great natural light and a daytime porter.

The apartment is located close to Barbican Underground station, and within walking distance of Farringdon and Moorgate Stations. Local amenities are all located nearby with supermarkets, St Paul's One New Change and Smithfield Market round the corner.

Features

- Two Bedrooms
- Two Bathrooms
- Daytime Concierge
- Juliet Balcony
- Wooden Floors Throughout
- Separate Kitchen

Bridgewater Square, London, EC2Y



Fourth Floor

Total area (approx.): 62.7 sq. m (674.9 sq. ft)