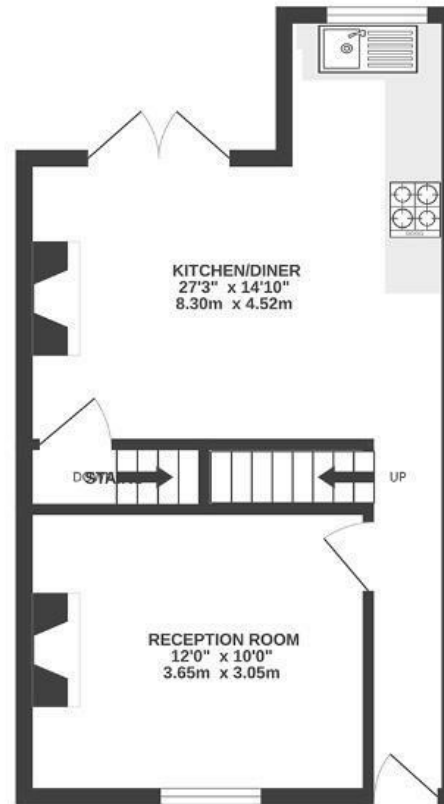




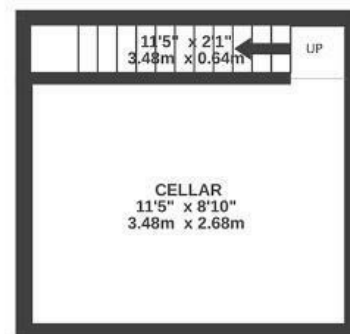
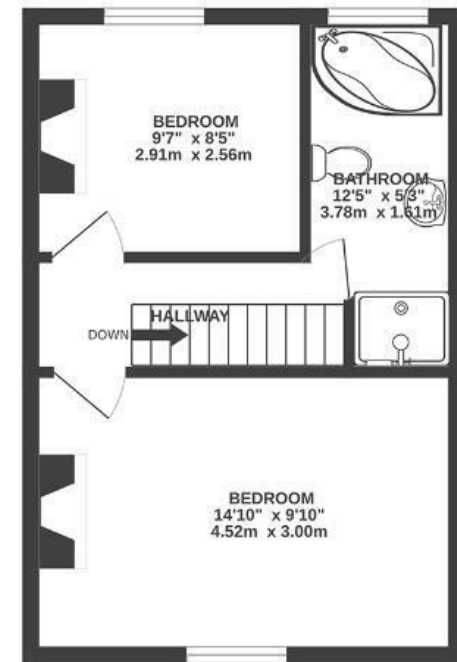
Park Street TOTTERDOWN

APPROXIMATE FLOOR AREA
73 SQM / 787 SQFT

GROUND FLOOR



FIRST FLOOR



Boardwalk

Park Street

TOTTERDOWN, BRISTOL



£395,000



2 Bedrooms



BS4 3BJ



1 Bathrooms

"The house is full of fond memories. It is where we have grown our family, and joined the vibrant local community including the brilliant Hillcrest School. The spacious kitchen diner has been the perfect setting for so many fun-filled dinner parties. Being between the green spaces of School Road Park, the Community Orchard and Arnos Vale makes it feel like a haven for wildlife despite being in the heart of the city and only a short walk from Temple Meads station."

