



BONNINGTON SQUARE, SW8

£550,000

- One bedroom
- Garden flat
- Private rear garden
- Period conversion
- Excellent transport
- Close to shops and amenities

@marshandparsons
marshandparsons.co.uk

MARSH &
PARSONS



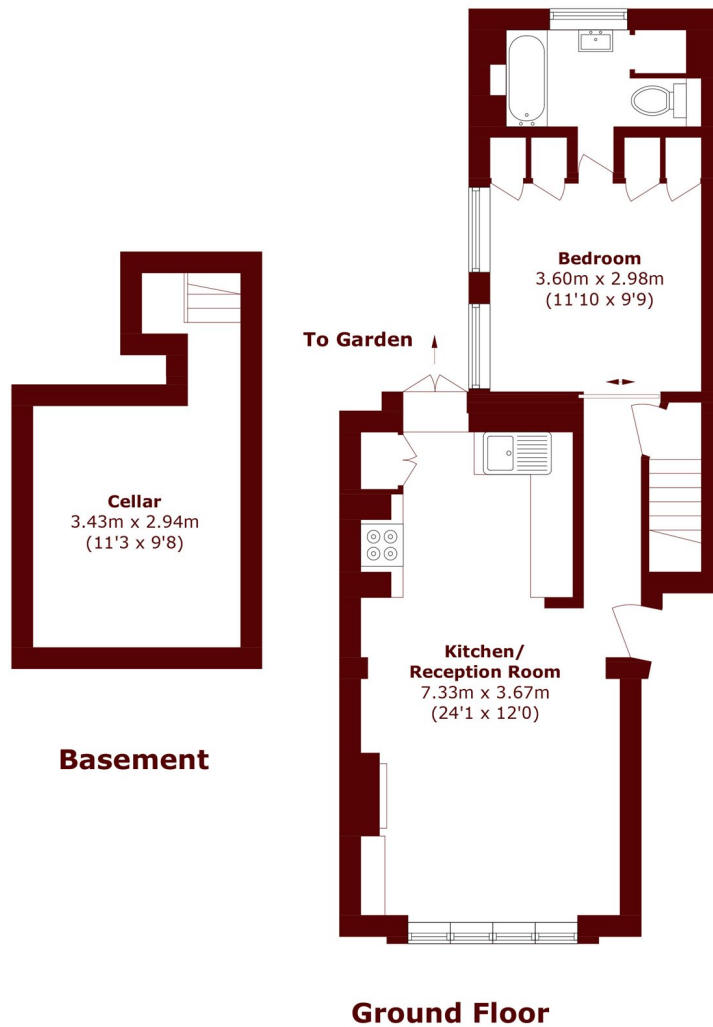
ABOUT THE PROPERTY

OFFERS OVER. An immaculate one bedroom garden flat with cellar, set within the highly sought after Bonnington Square, one of Vauxhall's most picturesque and community-focused residential enclaves. Extending to approximately 613 sq ft including the cellar, this beautifully presented home combines period charm with practical living space and private outdoor amenity.

Bonnington Square is renowned for its village-like atmosphere and community gardens, including the much-loved Bonnington Square Pleasure Garden. The property is moments from the vibrant amenities of Vauxhall, offering riverside walks, independent cafés, restaurants and everyday conveniences.



STEP INSIDE BONNINGTON SQUARE



Total area (approx.): 57.0 sq. m (613.5 sq. ft)
(Including Basement)

Kennington
020 7587 1533

Energy Rating: D We aim to make our particulars both accurate and reliable. However, they are not guaranteed; nor do they form part of an offer or contract. If you require clarification on any points then please contact us, especially if you're traveling some distance to view. Please note that appliances and heating systems have not been tested and therefore no warranties can be given as to their good working order

**MARSH &
PARSONS**