



Shirland Mews | London | W9

£495 Per Week |



ADN
RESIDENTIAL

A second floor (top) one bedroom apartment situated on a pretty cobbled mews located in Maida Vale. This lovely property benefits from having wooden flooring, double glazed windows and underfloor heating throughout and comprises, open plan fully fitted kitchen/reception room, principal bedroom with storage and a shower room. Shirland Mews is ideally located 0.6m from Maida Vale underground station. (Bakerloo Line).

Council Tax: Westminster - Band D

Security Deposit: £2,475

Holding Deposit: £495

Deposits shown are based on an Assured Periodic Tenancy Agreement.

- Open Plan Kitchen/Reception Room
- One Bedroom
- Shower Room
- Underfloor Heating
- Double Glazed Windows
- Flooring

Council Tax Band: D

EPC: B

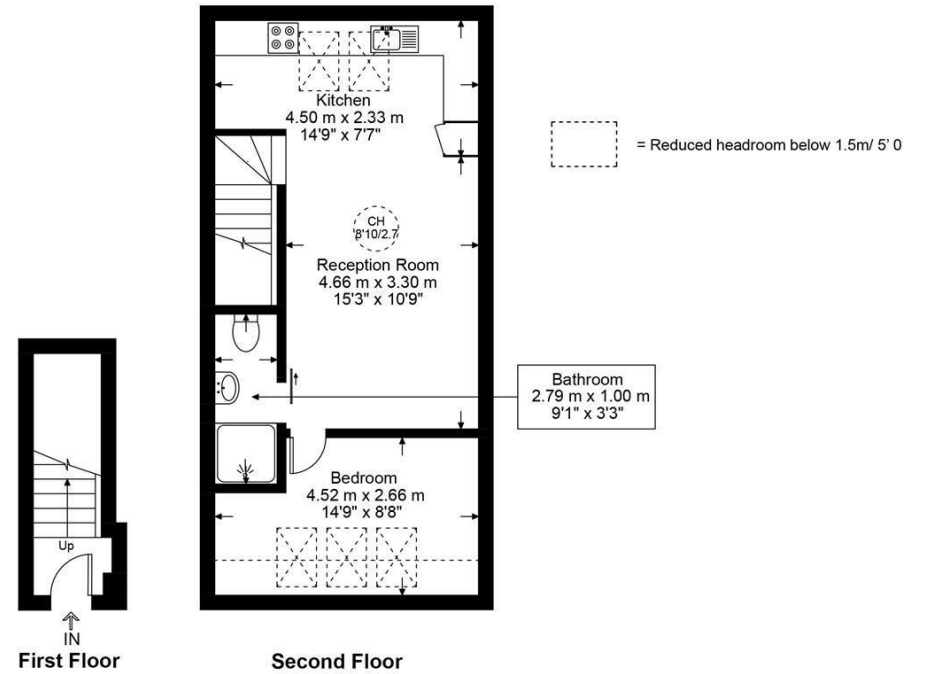




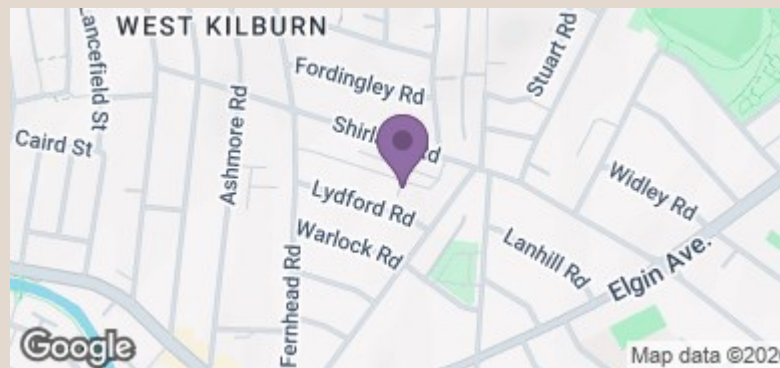
Shirland Mews, W9

Approximate Gross Internal Area = 532.8 sq ft / 49.5 sq m

Restricted Height = 29 sq ft / 2.7 sq m



This plan is for layout guidance only and is not drawn to scale unless stated. All dimensions, including windows, doors, and the Total Gross Internal Area (GIA), are approximate. For precise measurements, please consult a qualified architect or surveyor before making any decisions based on this plan.



Energy Efficiency Rating		Current	Potential
Very energy efficient - lower running costs			
(92 plus)	A		
(81-91)	B	81	81
(69-80)	C		
(55-68)	D		
(39-54)	E		
(21-38)	F		
(1-20)	G		
Not energy efficient - higher running costs			
England & Wales		EU Directive 2002/91/EC	