

## Grosvenor Avenue, N5

£750,000

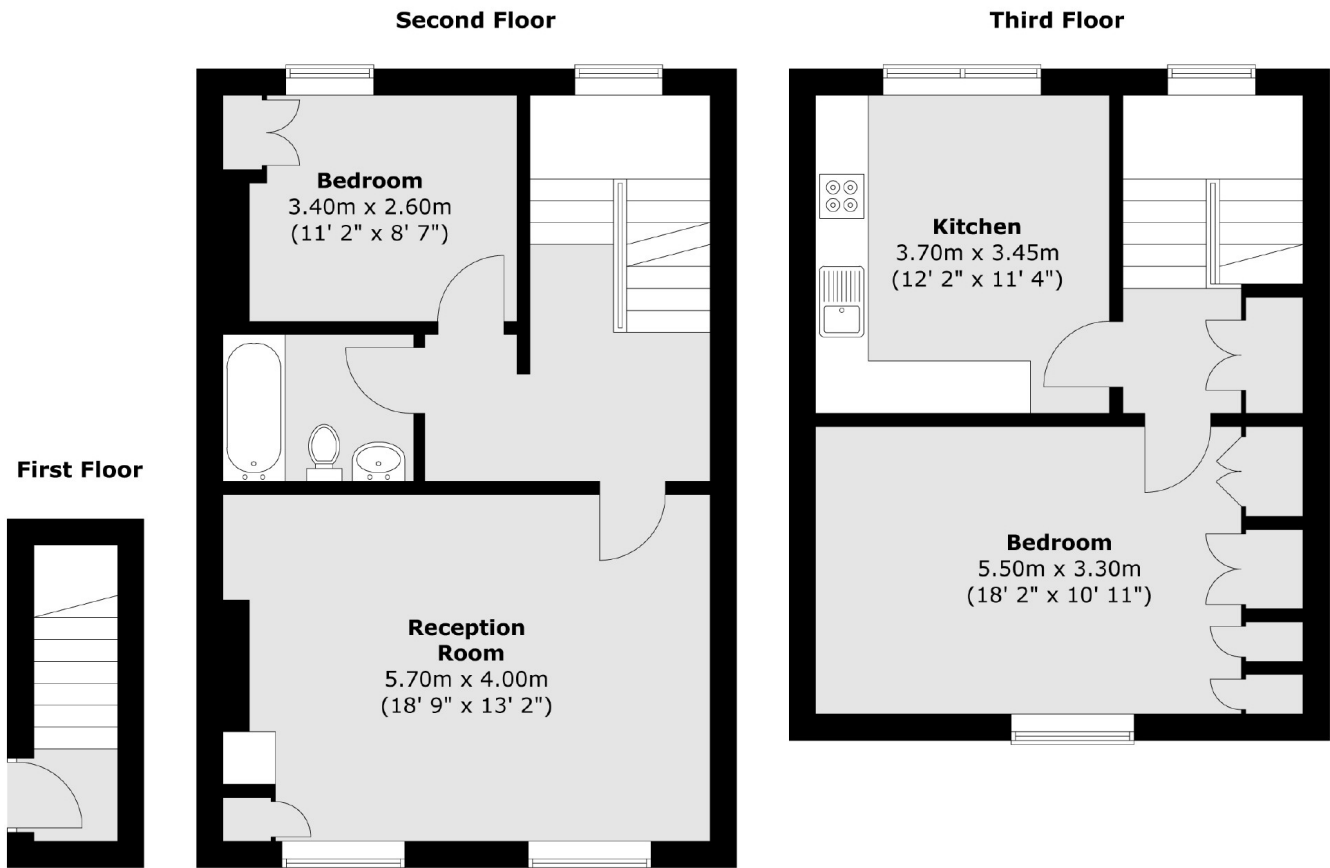
A spacious two-bedroom flat arranged over the top two floors of a Victorian conversion. Offering nearly 1,000 sq ft of well-appointed living space, the property features a large reception room and a separate kitchen. Also being sold with a private section of the rear garden.

This flat is ideally located for access to Canonbury Station (Overground) which is just around the corner where you are one stop from Highbury and Islington (Victoria). Ever popular Newington Green is also within easy reach with all of its cafés, shops and eateries.

### Features

- Two Bedrooms
- Split Level
- Victorian Conversion
- Chain Free
- Private Garden
- Top Two Floor

# Grosvenor Avenue, London, N5



Total area (approx.) : 92.4 sq. m (995 sq. ft)