



The Boarts

Lydbrook, Gloucestershire, GL17 9QB

£315,000



A beautifully positioned detached cottage occupying a generous corner plot in a sought after semi rural setting, enjoying stunning views across surrounding woodlands. This charming home offers well proportioned accommodation including two reception rooms, comprising a spacious lounge and a separate dining room, along with a fitted kitchen, separate utility room, and a ground floor bathroom that was tastefully refurbished in 2024. Upstairs, there are two bedrooms, both enjoying lovely far reaching views.

Outside, the property continues to impress with beautifully maintained gardens. To the front, a patio seating area is perfectly placed to make the most of the picturesque outlook, complemented by mature flower borders. The elevated rear garden is mainly laid to lawn with established borders and pathways leading to a useful workshop and a summer house. Further benefits include a detached garage and off-road parking.

The Boarts is a tucked-away, semi-rural setting on the edge of Lydbrook, surrounded by the beautiful woodland landscape of the Forest of Dean. Enjoying an elevated position, this charming location offers a wonderful sense of peace and privacy, with a scenic outlook and easy access to the surrounding countryside. Lydbrook itself is a well-regarded Forest village with a strong sense of community, rich industrial history, and excellent access to woodland walks, the Wye Valley, and a range of outdoor pursuits. It is a popular choice for those seeking a quieter way of life while still remaining within reach of local amenities and neighbouring market towns.



Approached via UPVC double glazed front door into:

Entrance Porch:

6'1" x 4'5" (1.86m x 1.37m)

UPVC double glazed window, lighting, door to kitchen.

Kitchen:

8'11" x 5'10" (2.74m x 1.80m)

A range of eye level & base units, double glazed UPVC window to front aspect, one & a half bowl stainless steel sink with mixer tap, electric oven & hob with heater below and extractor fan above, power & lighting, arch way to dining room.

Dining Room:

8'8" x 7'6" (2.65m x 2.31m)

Power & lighting, stairs to first floor landing, electric heater, door to lounge.

Lounge:

11'4" x 11'1" (3.46m x 3.38m)

Electric fire, UPVC double glazed window to front aspect, power & lighting, airing cupboard, electric heater, door to inner hallway.

Inner Hallway:

9'10" x 5'0" (3.02m x 1.53m)

Double glazed UPVC window to front aspect, electric radiator, door to bathroom & utility room.

Bathroom:

9'3" x 5'10" (2.82m x 1.79m)

Aqua panel throughout, double glazed UPVC frosted window, panelled bath with hand rail & side gate, hand wash basin with storage beneath, W.C., electric heated towel rail, radiator, lighting.

Utility Room:

12'0" x 6'1" (3.66m x 1.86m)

A range of eye level and base units, two sinks and with mixer tap, double glazed frosted window, power & lighting, space & plumbing for washing machine, door to rear porch.

Rear Porch:

8'0" x 3'2" (2.45m x 0.98m)

Double glazed UPVC windows, door to garden.

First Floor Landing:

2'1" x 3'0" (0.66m x 0.92m)

Doors to both bedrooms, UPVC double glazed window to front aspect.

Bedroom One:

11'6" x 11'3" (3.53m x 3.45m)

Double glazed UPVC window to front aspect, power & lighting, built in wardrobes, built in heater.

Bedroom Two:

8'10" x 6'1" (2.70m x 1.87m)

Double glazed UPVC window to front aspect, mirrored built in wardrobes, electric knight storage heater, power & lighting.

Workshop:

14'9" x 9'1" (4.50m x 2.77m)

Power & lighting, windows.

Garage:

19'7" x 9'8" (5.97m x 2.97m)

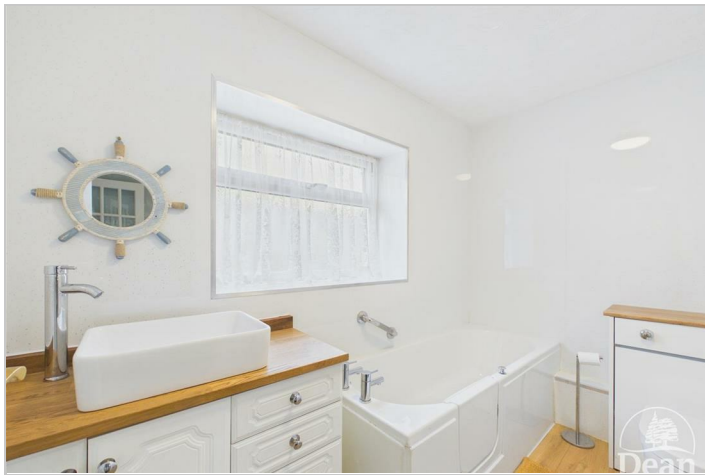
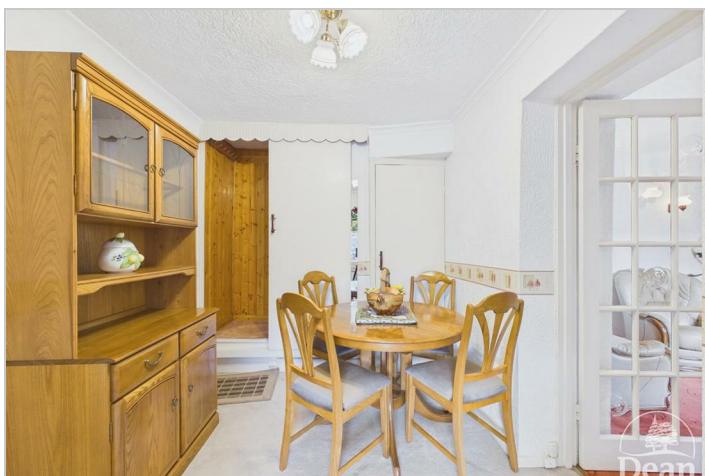
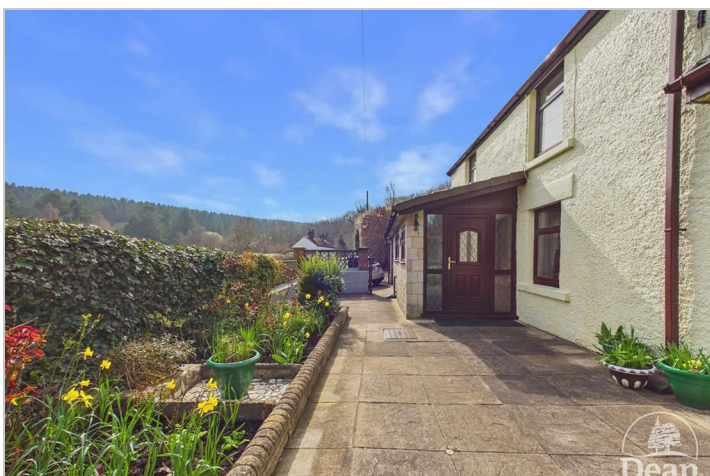
Up & over door, power & lighting.

Outside:

To the front of the property there is a patio seating area and is complemented by mature flower borders.

The elevated rear garden is mainly laid to lawn with established borders and pathways leading to a useful workshop and a summer house.

Further benefits include a detached garage and off-road parking.



Consumer Notes: Dean Estate Agents Ltd have prepared the information within this website/brochure with care and co-operation from the seller. It is intended to be indicative rather than definitive, without a guarantee of accuracy. Before you act upon any information provided, we request that you satisfy yourself about the completeness, accuracy, reliability, suitability or availability with respect to the website or the information, products, services, or related graphics contained on the website for any purpose.

These details do not constitute any part of any Offer, Contract or Tenancy Agreement.

Photographs used for advertising purposes may not necessarily be the most recent photographs, although every effort is made to update photographs at the earliest opportunity. Any reliance you place on such information is therefore strictly at your own risk. All photographic images are under the ownership of Dean Estate Agents Ltd and therefore Dean Estate Agents retain the copyright. You must obtain permission from the owner of the images to reproduce them.

Tenanted Properties – we are not always able to show the most recent condition of a property due to tenants' privacy and we may choose to show the photographs of the property when it was last vacant to at least allow clients some idea of the internal condition. Therefore, we would of course, urge you to view before making any decisions to purchase or rent the property and before any costs.

Energy Performance Certificates are supplied to us via a third party and we do not accept responsibility for the content within such reports.

PRC Certificates – Some ex-local authority properties have been repaired in recent years using the PRC Scheme wherein a certificate has been produced by a qualified property engineer. This certificate does not imply the suitability for a mortgage approval and you must satisfy yourself of the work carried out that may meet your lenders criteria.

As with leasehold property or new build development sites, you are likely to be responsible for a contribution to management charges and/or ground rent or a contribution to the development service charge. Please enquire at the time of viewing.

You may also incur fees for items such as leasehold packs and, in addition, you will also need to check the remaining length of any lease before you complete a mortgage application form.

Please ask a member of our team for any help required before committing to purchase a property and incurring expense.

Road Map



Hybrid Map



Terrain Map



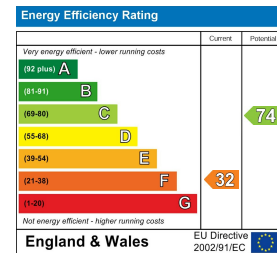
Floor Plan



Viewing

Please contact our Coleford Office on 01594 835751 if you wish to arrange a viewing appointment for this property or require further information.

Energy Efficiency Graph



These particulars, whilst believed to be accurate are set out as a general outline only for guidance and do not constitute any part of an offer or contract. Intending purchasers should not rely on them as statements of representation of fact, but must satisfy themselves by inspection or otherwise as to their accuracy. No person in this firm's employment has the authority to make or give any representation or warranty in respect of the property.