



Stoney Street, SE1

£2,750 Per calendar month

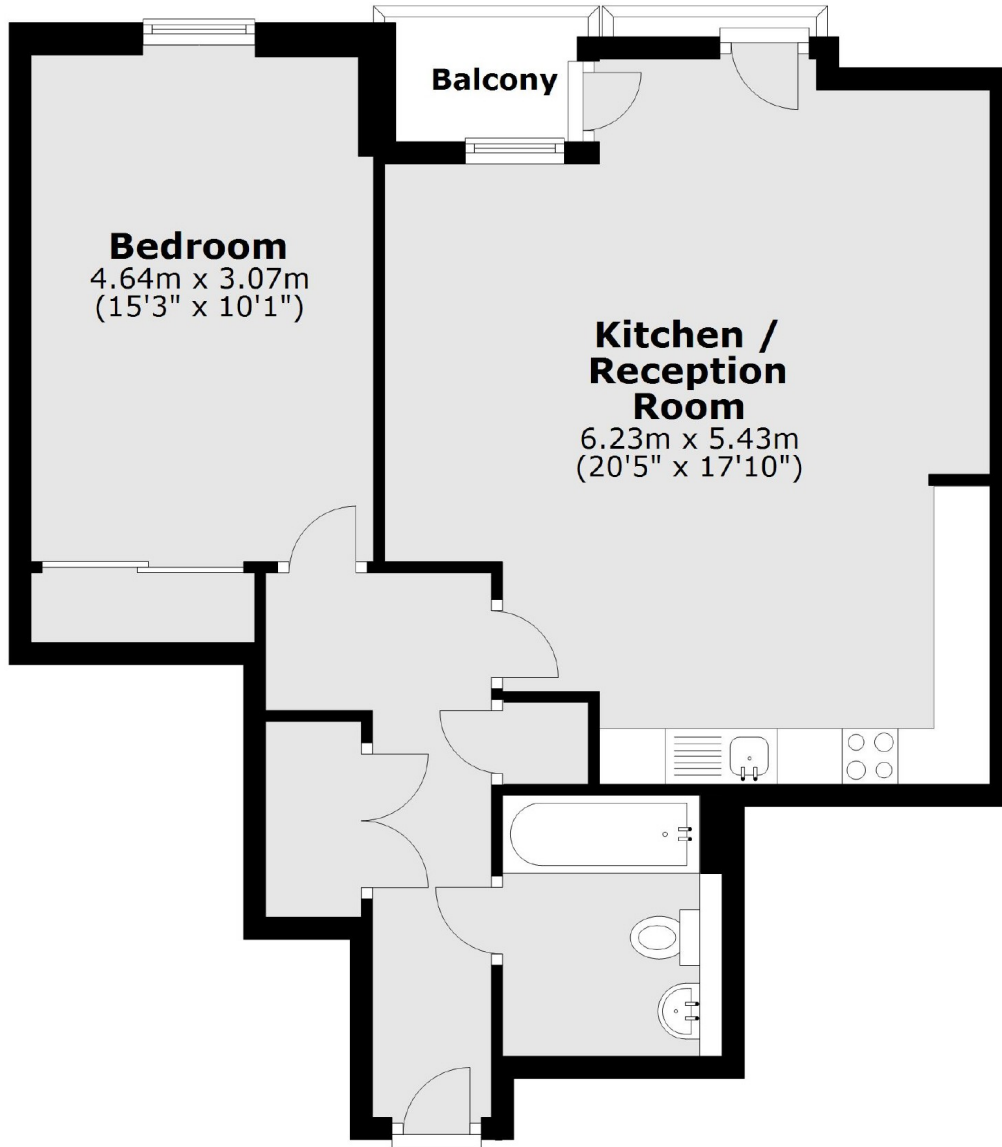
An immaculately presented modern apartment with a generous open plan kitchen and living room, leading onto a private west facing balcony, plus a large double bedroom, ample built in storage and a three piece bathroom.

Incredibly well located, tucked just back from Borough Market. London Bridge Station, the Thames, Bankside and the Shard are all very close by with numerous amenities and other attractions.

Features

- One Bedroom
- Borough Market
- South Bank
- Open Plan Living
- Secure Entry & Lift Access
- Private Balcony

Stoney Street, London, SE1



Main area: Approx. 60.7 sq. metres (653.3 sq. feet)
Plus balconies, approx. 2.2 sq. metres (24.0 sq. feet)

Dexters

London Bridge
54 Borough High Street
London
SE1 1XL
Lettings
020 7650 5101

Energy Rating: B. We aim to make our particulars both accurate and reliable. However they are not guaranteed; nor do they form part of an offer or contract. If you require clarification on any points then please contact us, especially if you're traveling some distance to view. Please note that appliances and heating systems have not been tested and therefore no warranties can be given as to their good working order.

 **RICS** | Regulated
Estate Agent
and Letting Agent

dexters.co.uk