



# St. Johns Court

Finchley Road, South Hampstead NW3

Asking Price £800,000

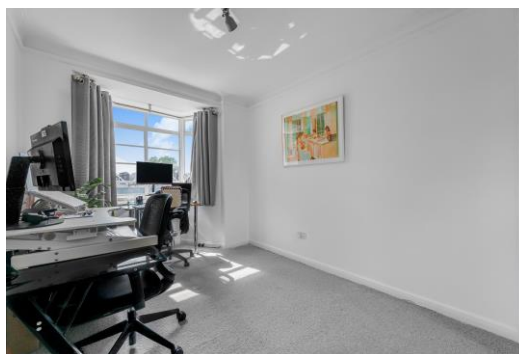
An extremely bright south facing three bedroom flat comprising 965 square feet, situated on the second floor of this ever popular and extremely well located purpose built block, with a lift and porters.

The property is presented in excellent condition throughout and benefits from wood floors in the hallway and the 19'8 x 16' reception room.

St Johns Court has the benefit of Waitrose on the ground floor and is surrounded by numerous transport links including the Jubilee and Metropolitan Lines, shops, restaurants and amenities. The service charge includes heating and hot water. Sole agent.

**CHESTERTONS**





# St. Johns Court

Finchley Road, South Hampstead NW3

- Three bedroom second floor flat
- South facing
- One bathroom & one shower room
- Built in storage
- 965 square feet
- Purpose built block with a lift
- Extremely bright
- Excellent condition throughout
- Located above Waitrose
- Located opposite Finchley Road Underground





**Tenure:** Leasehold 171 years 6 months remaining as of June 2025.

**Service Charge:** £6,237 per annum.

**Ground Rent:** £0

**Local Authority:** Camden

**Council Tax Band:** E

Score	Energy rating	Current	Potential
92+	A		
81-91	B		
69-80	C		
55-68	D	63 D	73 C
39-54	E		
21-38	F		
1-20	G		

### *Chestertons Hampstead Sales*

55-56 Hampstead High Street

Hampstead

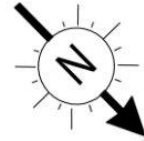
NW3 1QH

[hampstead@chestertons.co.uk](mailto:hampstead@chestertons.co.uk)

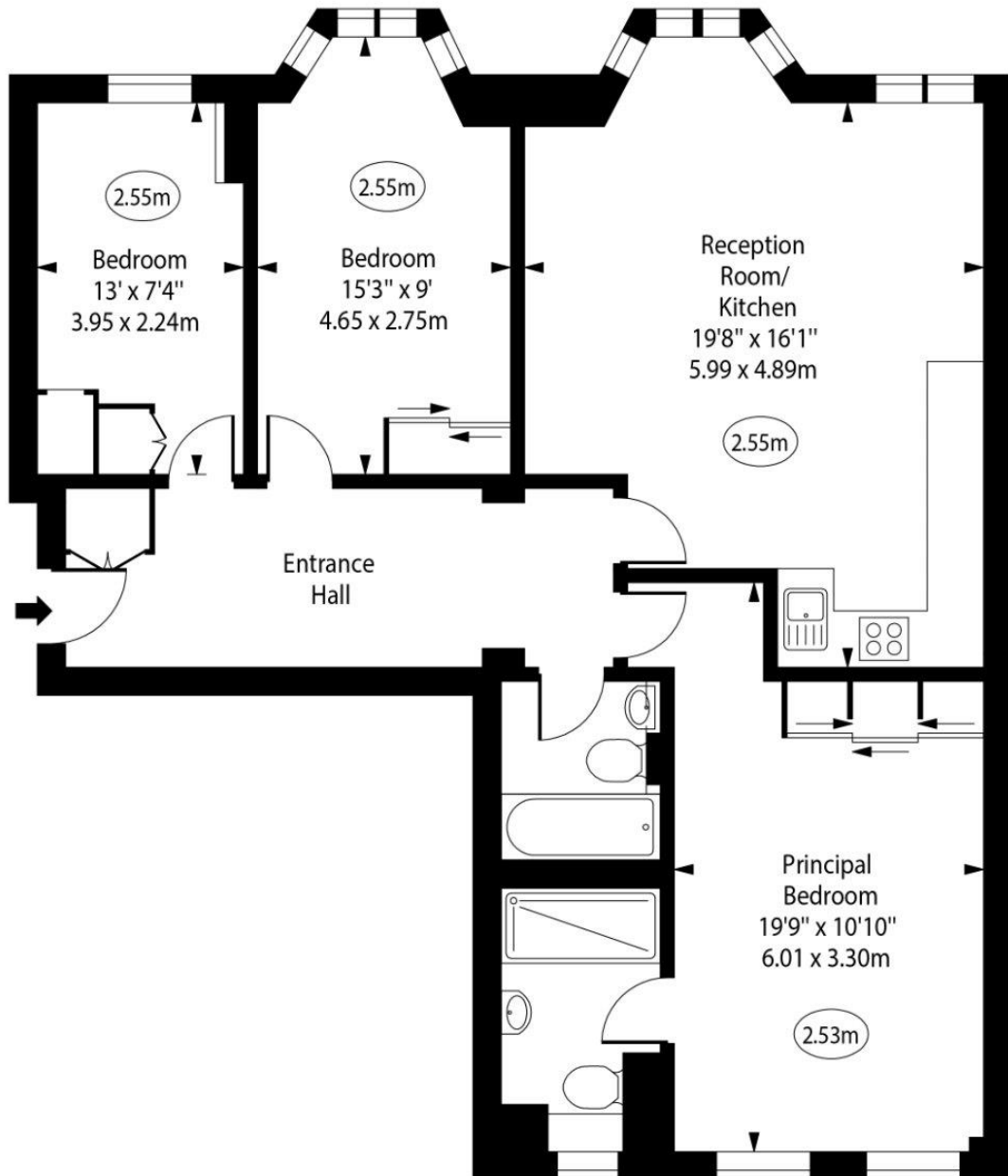
020 7794 3311

[chestertons.co.uk](https://www.chestertons.co.uk)

St. Johns Court,  
Finchley Road,  
South Hampstead, NW3



○ - Ceiling Height



Second Floor

Approx Gross Internal Area 965 Sq Ft - 89.65 Sq M

For Illustration Purposes Only - Not To Scale

