



Templewood, W13

£799,950

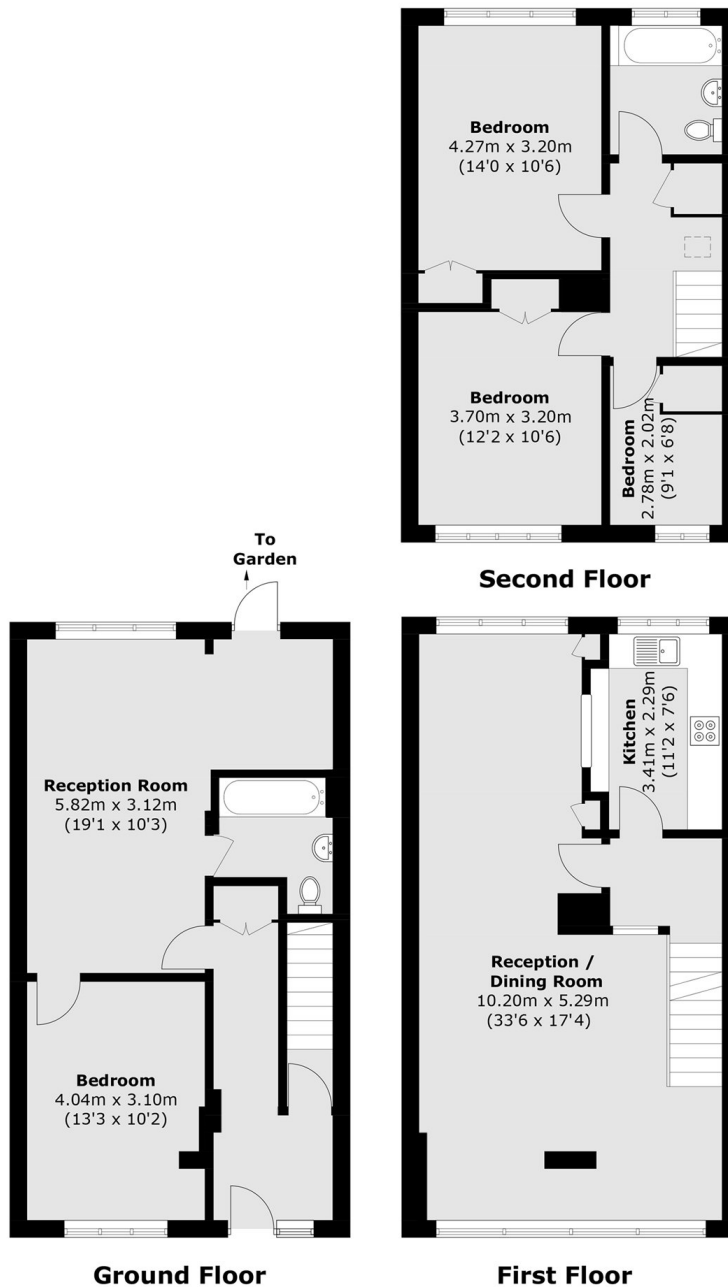
A modern three-storey townhouse offering flexible and spacious accommodation throughout. Features include four bedrooms, two bathrooms, a large open-plan reception/dining room, separate kitchen and a further living room. Presented in good condition and ready for immediate occupation with off street parking to the front.

Located within a highly sought after development there are well regarded private and state schools in close proximity. Pitshanger Lane is moments away, along with Cleveland and Pitshanger Parks. Easy access for both Ealing Broadway and West Ealing Crossrail stations.

Features

- Four Bedrooms
- Two Bathrooms
- Generous Living Space
- Off Street Parking
- No Onward Chain
- Close To Schools

Templewood, London, W13



Total area (approx.): 154.3 sq. m (1,660.8 sq. ft)