



LANSDOWNE HOUSE

*Lansdowne Road, London W11*

£2,650,000

2 Bed | 2 Bath | 1358 sqft

SANDERSONS

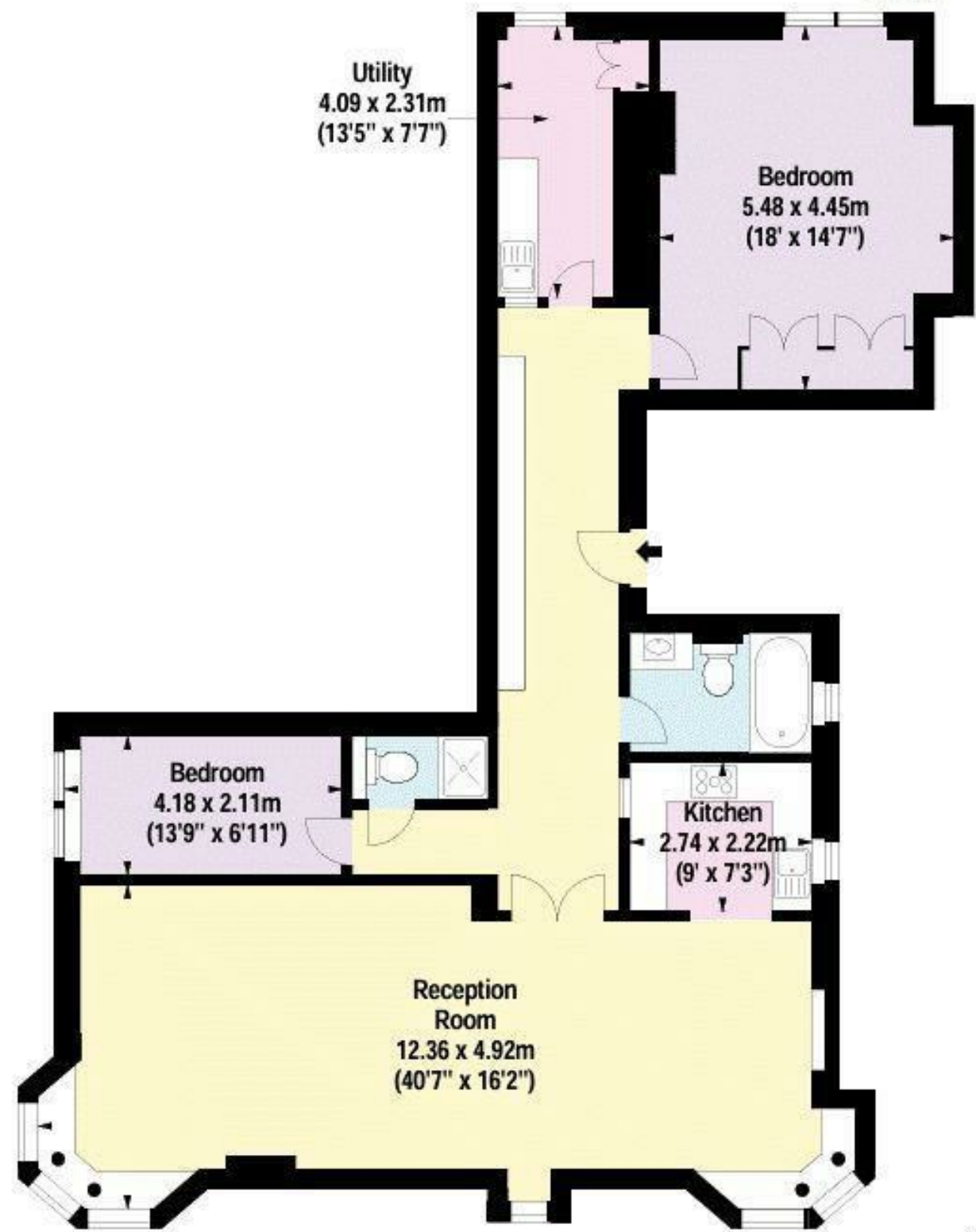
LONDON



## *A Landmark Residence in the Heart of Holland Park*

A light and spacious apartment on the fourth floor ( with lift ) in this beautiful Grade II listed period building with the benefit of attractive views towards Notting Hill and Holland Park. Originally built as Artist's Studios, Lansdowne House is an iconic period building located just to the north of Holland Park Avenue and within easy reach of the underground station ( central Line ) , the local shops and Holland Park itself.





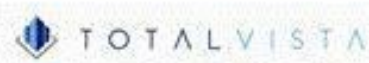
Fourth Floor



For Identification Purposes Only. Not To Scale. © www.totalvista.uk 2025

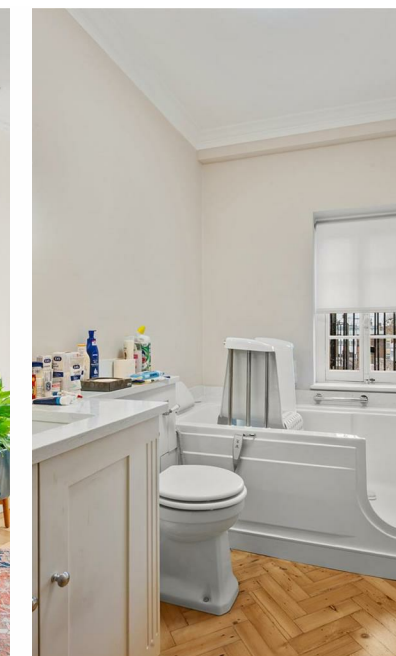
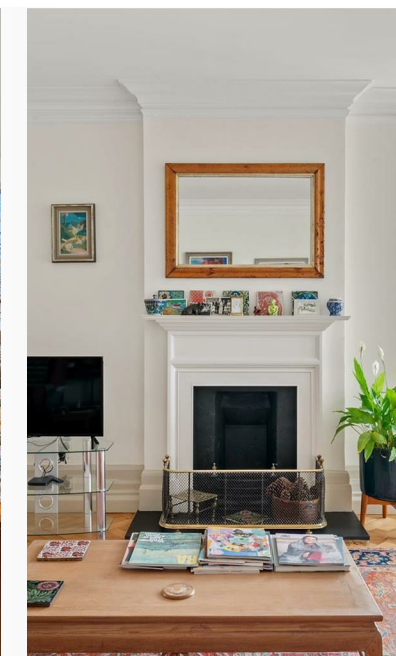
Lansdowne House,  
Lansdowne Road, W11

Approx. Gross Internal Area  
126.16 Sq M - 1358 Sq Ft



## KEY FEATURES

- Beautiful Grade II listed building.
- Two Bedrooms.
- Two Bathrooms.
- Superb Views.
- Lift.
- Close to all the shopping and transport facilities at Holland Park Avenue.
- Separate utility room






EPC Rating: | Council Tax Band: G

## SANDERSONS

LONDON

 108 Holland Park Avenue, London,  
W11 4UA

 020 7602 6725

 [james@sandersonslondon.co.uk](mailto:james@sandersonslondon.co.uk)

 [sandersonslondon.co.uk](http://sandersonslondon.co.uk)