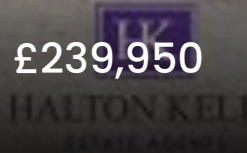




18 Canberra Square, Warrington

Warrington

Offers in Region of £239,950



18 Canberra Square

Warrington, Warrington

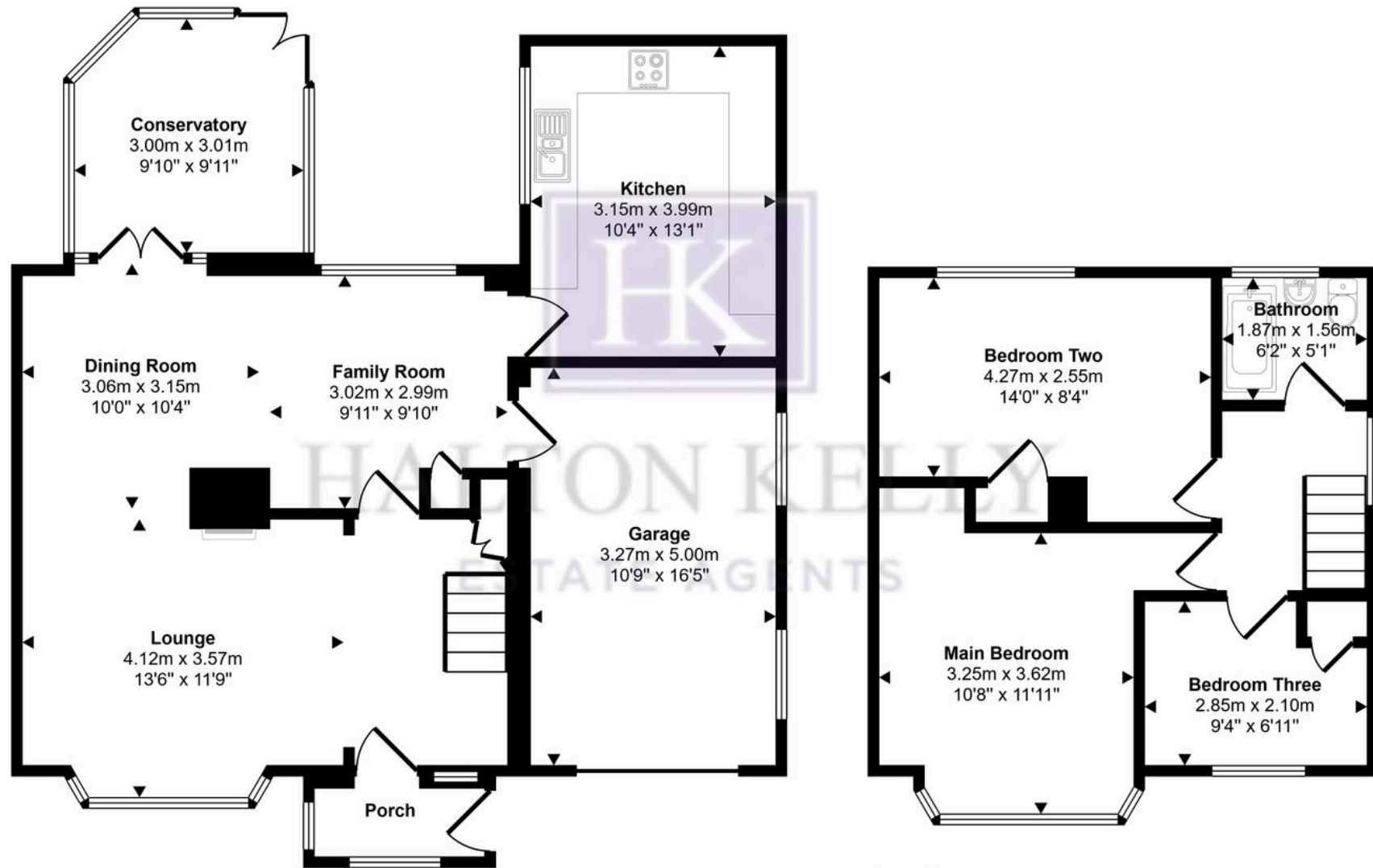
Council Tax band: B

Tenure: Freehold

- LARGER THAN AVERAGE SEMI
- EXTENDED ACCOMMODATION
- OPEN PLAN LIVING SPACE
- MODERN KITCHEN
- THREE BEDROOMS
- RECENTLY FITTED BATHROOM
- NO ONWARD CHAIN
- PRIVATE REAR GARDEN
- PERFECT FIRST OR FAMILY HOME
- MUST VIEW!



Approx Gross Internal Area
124 sq m / 1334 sq ft



Ground Floor
Approx 83 sq m / 894 sq ft

First Floor
Approx 41 sq m / 441 sq ft

This floorplan is only for illustrative purposes and is not to scale. Measurements of rooms, doors, windows, and any items are approximate and no responsibility is taken for any error, omission or mis-statement. Icons of items such as bathroom suites are representations only and may not look like the real items. Made with Made Snappy 360.