

Triptych Place, SE1

£1,395 Per week

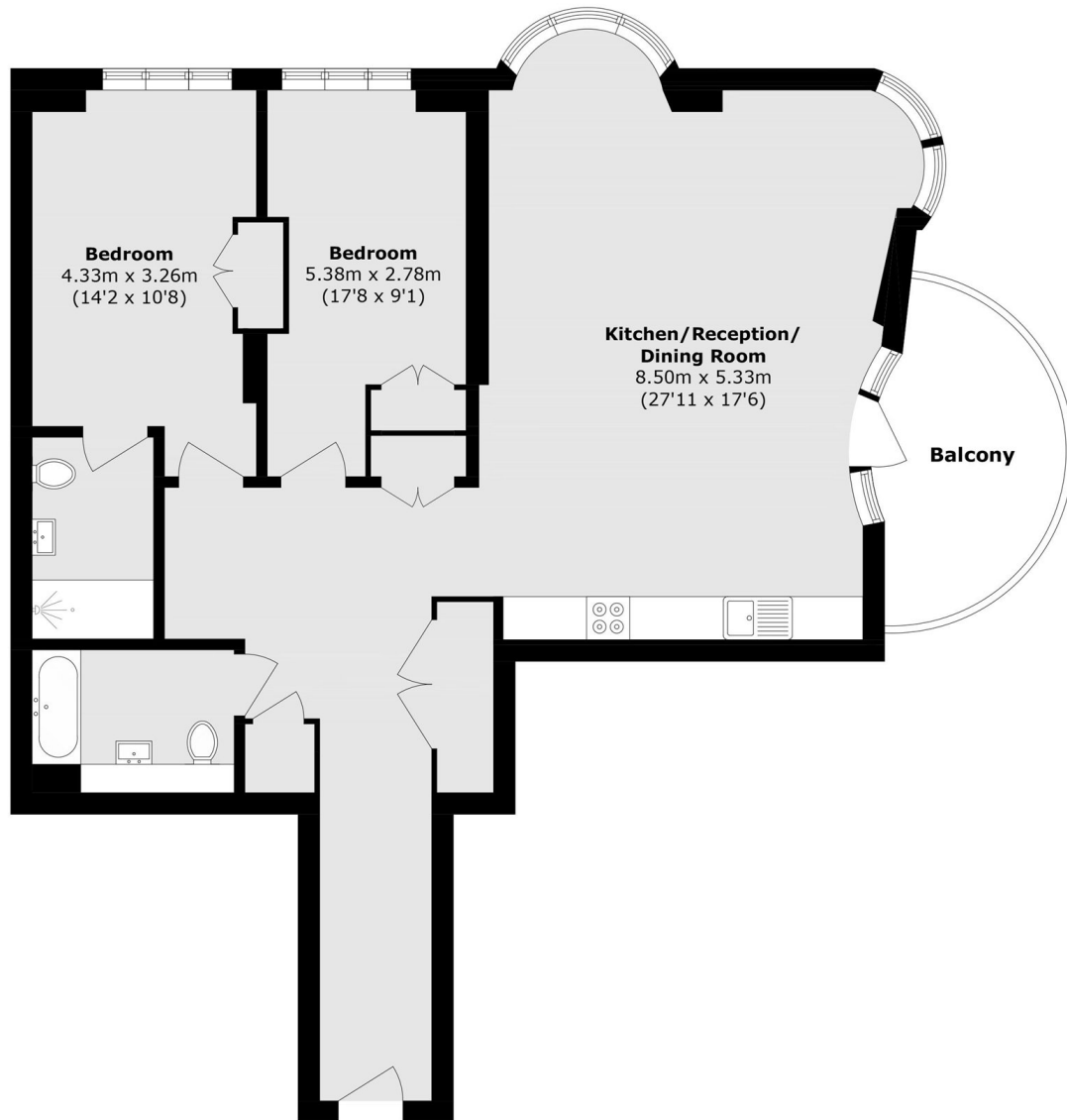
A two bedroom two bathroom apartment to rent in SE1's newest development, Triptych. Set on the 1st floor, the apartment is a great example of open plan modern living.

Triptych, one of SE1's premier new developments, is just moments from the iconic Borough Market, Shakespeare's Globe Theatre, and the Tate Modern. With excellent connectivity via London Bridge Station and the Millennium Bridge, it offers the perfect blend of culture, convenience, and city living.

Features

- Two Bedrooms
- Two Bathrooms
- 24hr Concierge
- Air Conditioning
- Residents Cinema

Triptych Place, London, SE1



First Floor

Total area (approx.): 112.0 sq. m (1205.5 sq. ft)

Balcony area (approx.): 9.6 sq. m (103.3 sq. ft)