



OFFERS IN EXCESS OF

£625,000

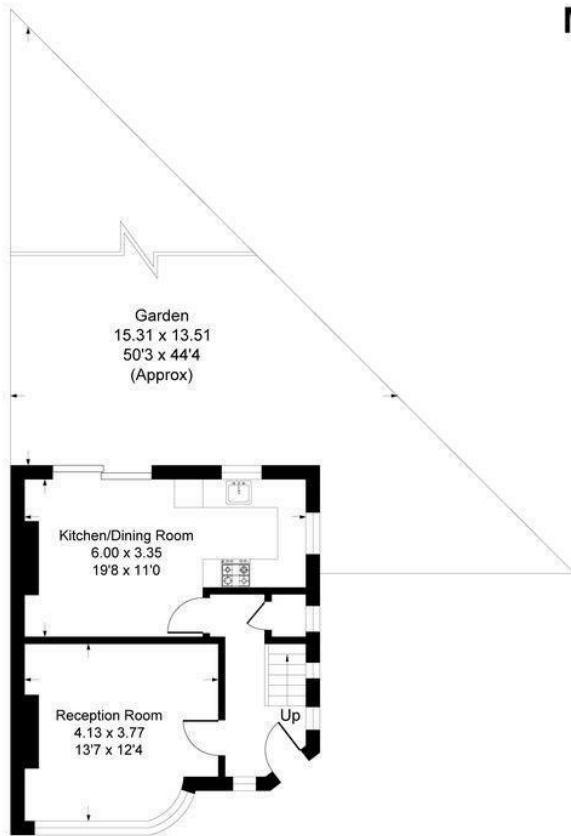
Melrose Crescent

Orpington, BR6 9NT

EPC RATING: COUNCIL TAX BAND: E

Melrose Crescent, BR6

Approximate Gross Internal Area
81.5 sq m / 878 sq ft



Ground Floor




First Floor

This plan is for layout guidance only. Not drawn to scale unless stated. Windows and door openings are approximate. Whilst every care is taken in the preparation of this plan, please check all dimensions, shapes and compass bearings before making any decisions reliant upon them.
Produced By Planpix

3 
1 
1 



Agents Note: Whilst every care has been taken to prepare these particulars, they are for guidance purposes only. All measurements are approximate and are for general guidance purposes only and whilst every care has been taken to ensure their accuracy, they should not be relied upon and potential buyers/tenants are advised to recheck the measurements

Energy Efficiency Rating		Current	Potential
Very energy efficient - lower running costs			
(92 plus) A			
(81-91) B			
(69-80) C			
(55-68) D			
(39-54) E			
(21-38) F			
(1-20) G			
Not energy efficient - higher running costs			
England & Wales	EU Directive 2002/91/EC		



OFFICE ADDRESS

1 Chatsworth Parade
Kent
BR5 1EF

OFFICE DETAILS

01689 806 770
infopw@sinclairhammelton.co.uk