



Hendon Way, NW2

£600 Per week

**Dexters**



## Hendon Way, NW2

A modern three bedroom apartment with wood floors, high ceilings, open-plan living, ample storage, and a sleek kitchen and bathroom perfect for couple or family.

The area offers excellent transport links and a wide range of amenities, with Hampstead, West Hampstead, and Golders Green all nearby. For scenic walks and outdoor activities, Hampstead Heath and Golders Hill Park are just a short stroll away.

### Features

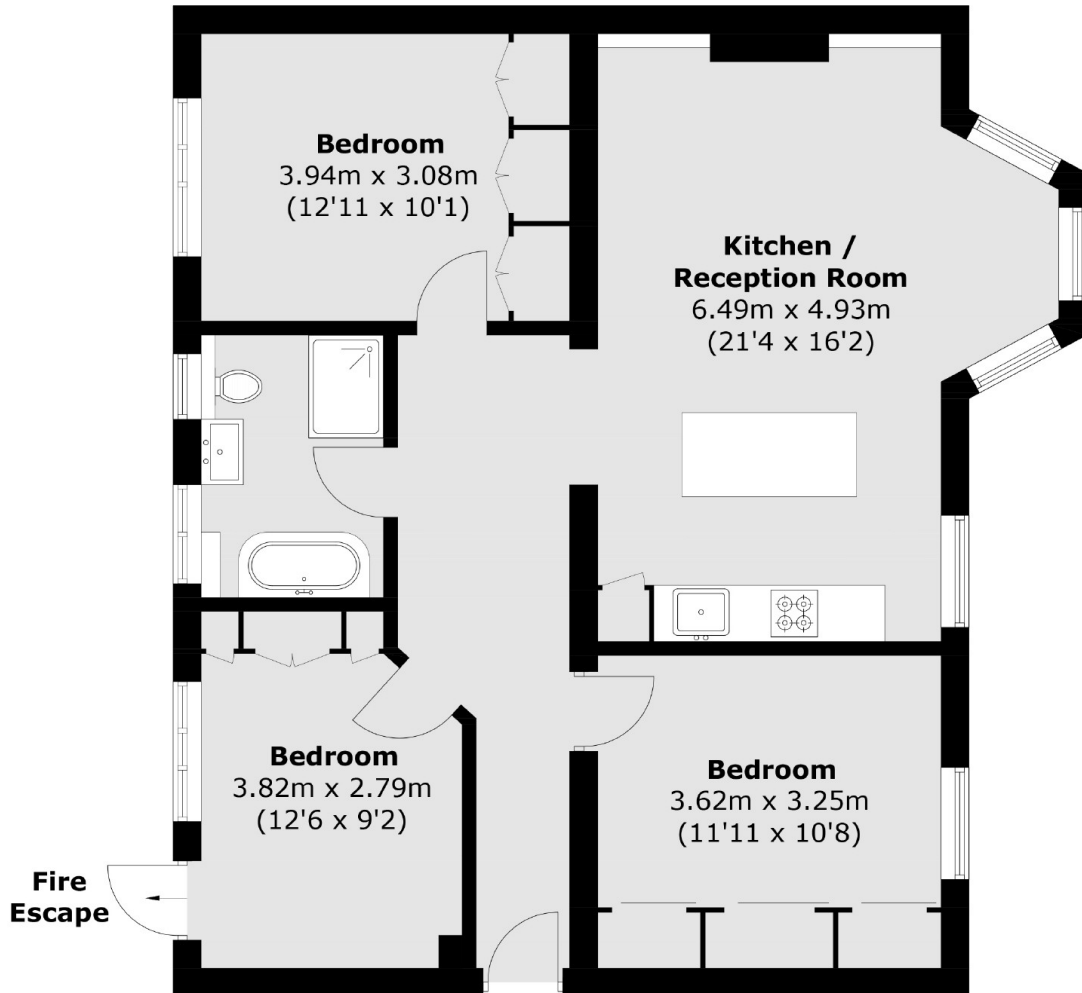
- Three Bedrooms
- Purpose Build
- Communal Gardens
- Modern Finish
- Wooden Floors
- Off Road Parking







Hendon Way,  
London, NW2



Total area (approx.): 82.0 sq. m (882.6 sq. ft)

**Dexters**

West Hampstead Lettings  
106 West End Lane  
London  
NW6 2LS  
Lettings  
020 7644 9301

Energy Rating: . We aim to make our particulars both accurate and reliable. However they are not guaranteed; nor do they form part of an offer or contract. If you require clarification on any points then please contact us, especially if you're traveling some distance to view. Please note that appliances and heating systems have not been tested and therefore no warranties can be given as to their good working order.

 **RICS** | Regulated  
Estate Agent  
and Letting Agent

dexters.co.uk