



James Close, Woodlands, NW11  
Offers Over £500,000

moreland 





Exclusive listing on this bright and spacious two double bedroom apartment extending to 979 SQFT / 91SQM. Private balcony overlooking the communal grounds, positioned on the second floor of this small purpose-built block totalling 41 apartments, additionally including a brick garage and parking available.

Comprising a communal hallway with a lift to the second floor. Entering the apartment is a large hallway with fitted cupboards, a guest cloakroom and double doors through to an L-shaped living room with access to the balcony. Also fitted a kitchen with integrated appliances.

Two double bedrooms, one with an en-suite that could be converted fully into a shower room.

Outside, there are extensive communal grounds with gardens at the rear, with parking and a garage at the front of the building.

Conveniently located within walking distance of either Brent Cross or Golders Green tube stations.

There is a variety of shopping facilities along Golders Green Road, including restaurants and coffee shops.

Also, easy access to the A1 and M1 motorways and regular buses and coaches to central London and major airports.

Size - 91.4 sq m / 983 sq ft



2 Bedroom

Tenure - Share of Freehold



1 Bathroom

Council - Barnet



1 Reception

Tax Band - F



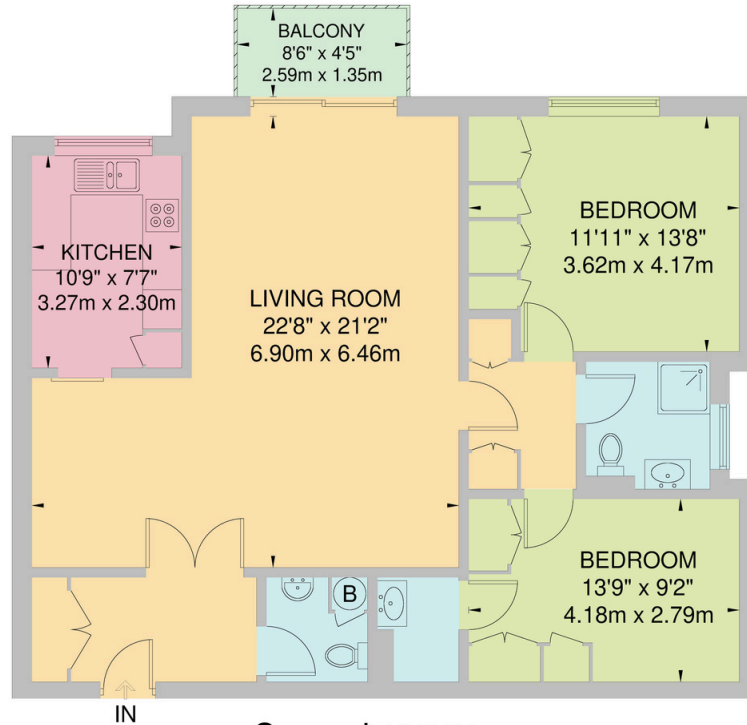
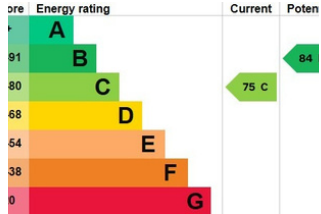
Garage and Resident parking





# James Close, Woodlands, NW11

Approximate Gross Internal Area  
91.4 sq m / 983 sq ft



**Second FLOOR**  
91.4 sq m / 983 sq ft

# moreland

At Moreland, our mission is to deliver a trusted, professional, and personalised property service by combining deep local expertise with clear communication and a genuine commitment to our clients' best interests.

We strive to make every property journey smooth, transparent, and successful, building long-term relationships through integrity, knowledge, and exceptional customer care.

# 020 8381 4970

[info@morelandstateagents.co.uk](mailto:info@morelandstateagents.co.uk)

Moreland Estates Ltd is a company registered in England and Wales with company number 03663497

Trading Address is: 903 - 905 Finchley Road, Golders Green, London, NW11 7PE

VAT Registration Number: GB 701 775 936

Registered Office is: Unit 8 Alpha Business Park, Travellers Close, Welham Green, Hertfordshire, AL9 7NT

