

## Bloemfontein Road, W12

### £325,000

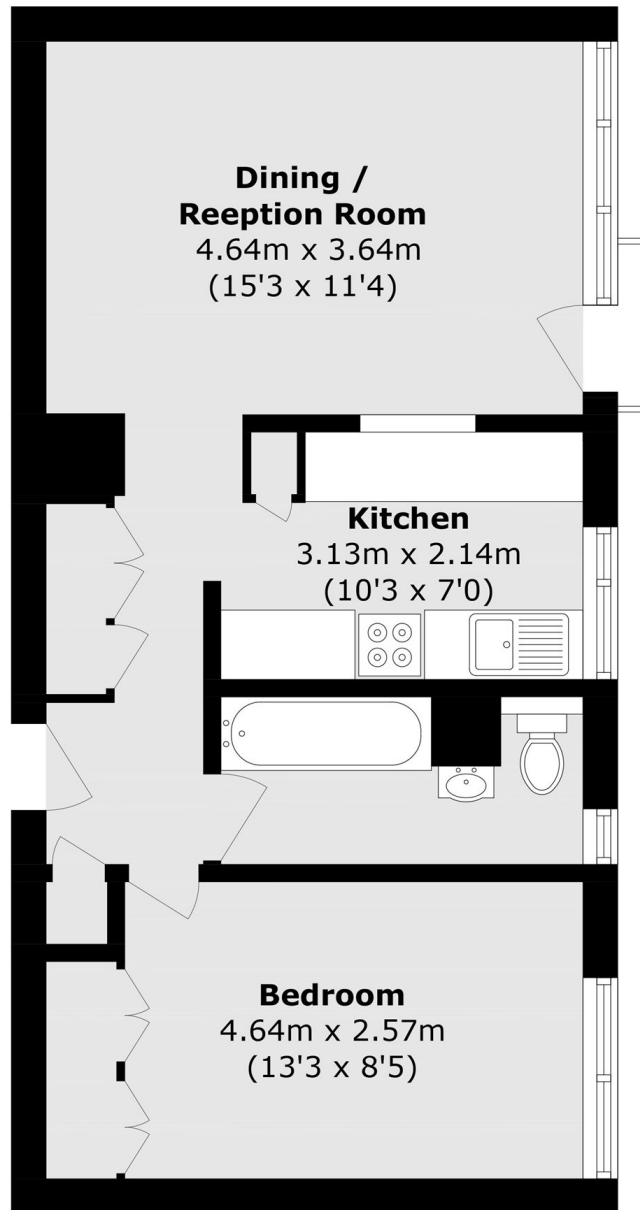
Located on the first floor, this bright and spacious apartment is an ideal opportunity for first-time buyers. The property features an open-plan kitchen and living area, perfect for both relaxing and entertaining. There is a generously sized double bedroom and a modern bathroom.

Lugard House is situated in the heart of Shepherds Bush and conveniently located between Shepherds Bush Market and White City tube station.

### Features

- One Bedroom
- First Floor
- Juliet Balcony
- Excellent Location
- Lift Serviced
- Gated Car Park on Application

# Bloemfontein Road, London, W12



Total area (approx.): 46.5 sq. m (500.5 sq. ft)