



Price
£650,000

Freehold

5x  2x  1x 

**Wytherling Close,
Bearsted, Maidstone,
Kent, ME14**

OVER 60?

Secure this property
for up to **59% less!**

Wards
Helping you move forwards



Main features

- Stunning extension to the side and rear, providing additional space
- Excellent rear garden, ideal for entertaining family and friends
- Open plan kitchen/diner, with a handy utility area
- Large driveway with integral garage
- Within walking distance to highly rated schools, shops and pubs

Accommodation

GROUND FLOOR

Entrance Hall
 Cloakroom: 6'6 x 3'6 (1.98m x 1.07m)
 Lounge: 12'8 x 11'9 (3.86m x 3.58m)
 Kitchen: 12'1 x 9'2 (3.69m x 2.80m)
 Sitting Area: 11'0 x 9'4 (3.36m x 2.85m)
 Utility Area: 7'10 x 7'8 (2.39m x 2.34m)
 Conservatory: 20'11 x 11'0 (6.38m x 3.36m)

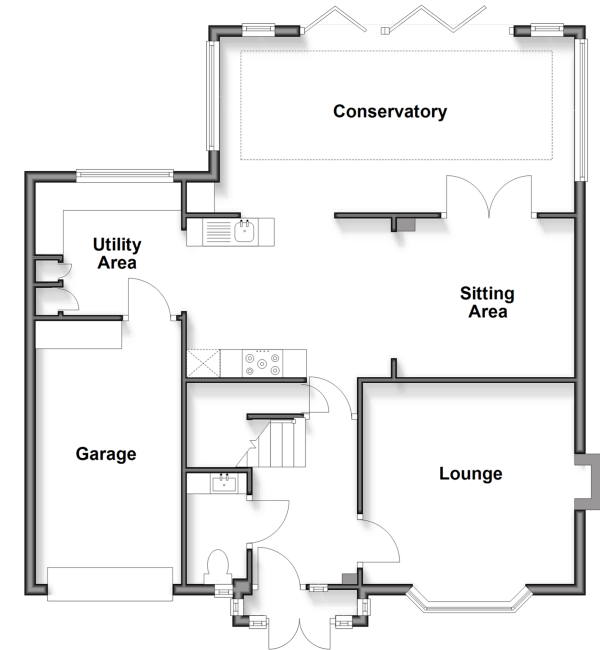
FIRST FLOOR

Landing
 Bedroom 1: (L-shaped) 10'1 x 9'0 (3.08m x 2.75m) plus 2'9 x 2'8 (0.84m x 0.81m)
 En-suite Shower Room: (L-shaped) 3'1 x 2'5 (0.94m x 0.74m) plus 4'5 x 3'1 (1.35m x 0.94m)
 Bedroom 2: (L-shaped) 12'0 x 6'5 (3.66m x 1.96m) plus 8'10 x 7'10 (2.69m x 2.39m)
 Bedroom 3: 12'0 x 7'10 (3.66m x 2.39m)
 Bedroom 4: 8'9 x 8'8 (2.67m x 2.64m)
 Bedroom 5/Office: 6'5 x 5'6 (1.96m x 1.68m)
 Bathroom: 7'4 x 5'7 (2.24m x 1.70m)

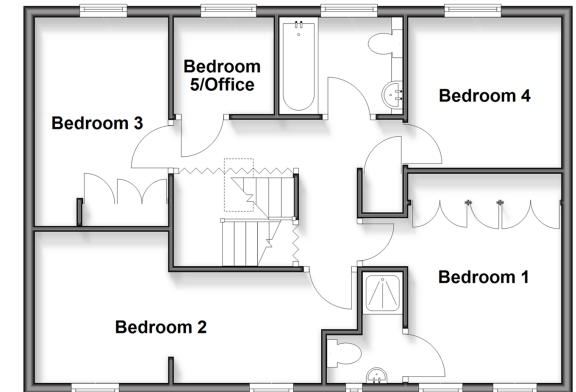
OUTSIDE

Garage: 16'6 x 8'6 (5.03m x 2.59m)
 Driveway
 Front and Rear Gardens

Ground Floor
 Approx. 87.8 sq. metres (945.2 sq. feet)



First Floor
 Approx. 61.4 sq. metres (660.9 sq. feet)



Call Bearsted - 01622 730955 ■ wardsofkent.co.uk

- Legal advice should be taken to verify fixtures/fittings, planning, alterations and/or lease details
- Appliances & services are untested, dimensions are approximate and floor plans are not to scale
- Through a Homewise Home For Life Plan people aged 60+ can secure this property for up to 50% less, by purchasing a Lifetime Lease.