



**Ray Close, Purton - SN5 4GU**  
Swindon

Guide Price **£259,000**  
**mcfarlane**  
property.com

## Ray Close

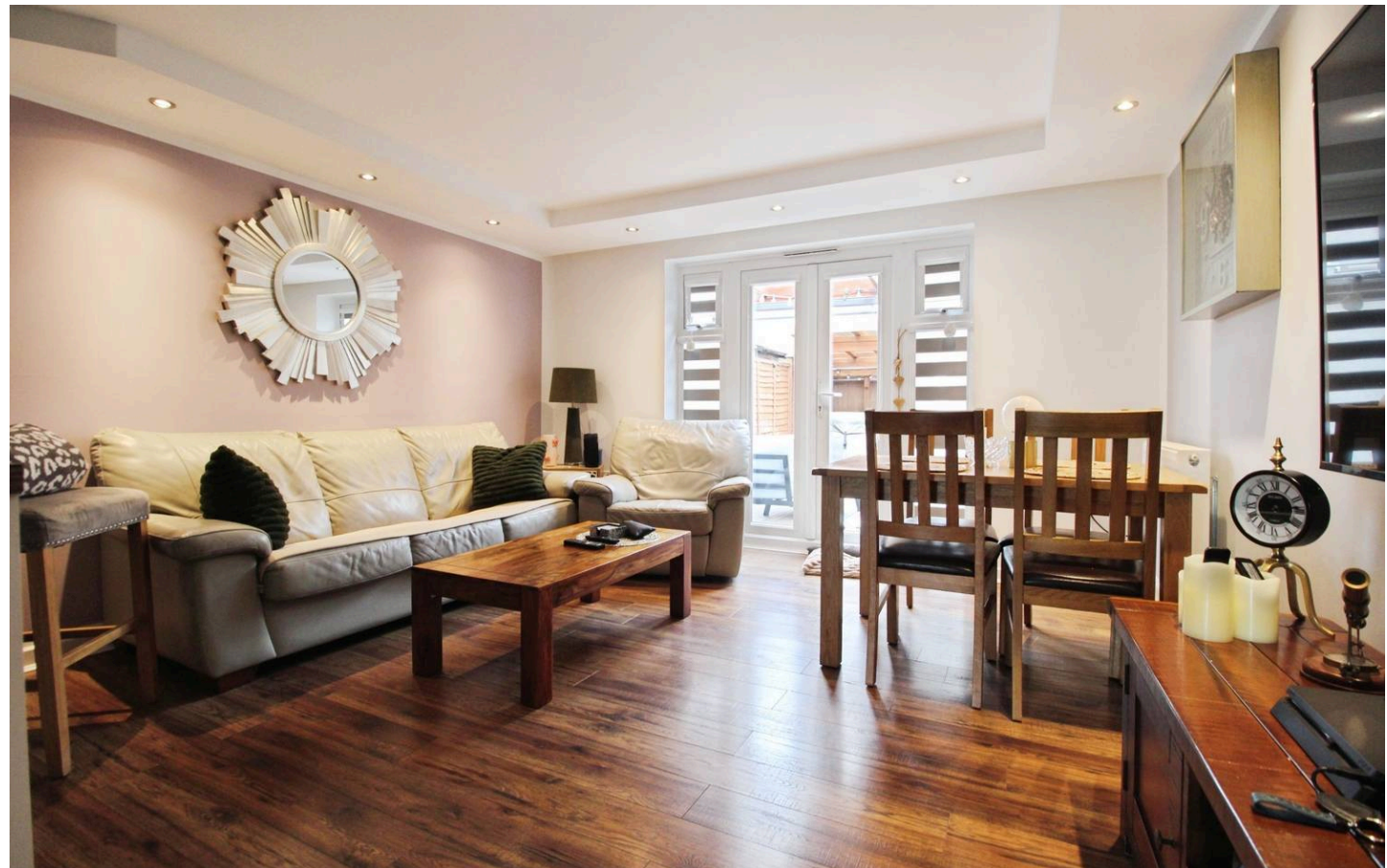
Purton, Swindon

- Modern Open Plan Living
- TWO Allocated Parking Spaces
- TWO DOUBLE Bedrooms
- Enclose Rear Garden
- Sought After Cul-De-Sac Position
- NO ONWARD CHAIN

NO ONWARD CHAIN A well proportioned TWO Double Bedroom home built by Taylor Wimpey some 7 years ago.

The well appointed accommodation presents well with a bright and airy feel throughout.

The open plan kitchen living family area is ideal for modern family living especially with doors to the enclosed rear gardens.



## Ray Close

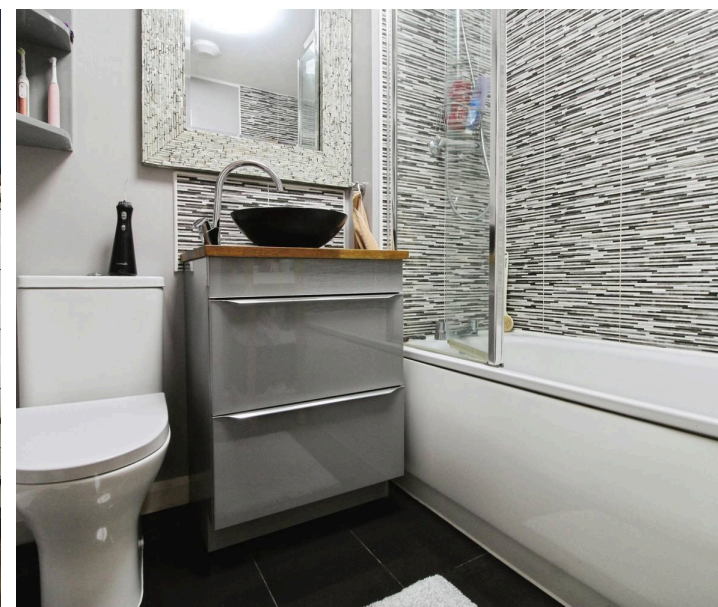
Purton, Swindon

Council Tax band: C

Tenure: Freehold

EPC Energy Efficiency Rating: B

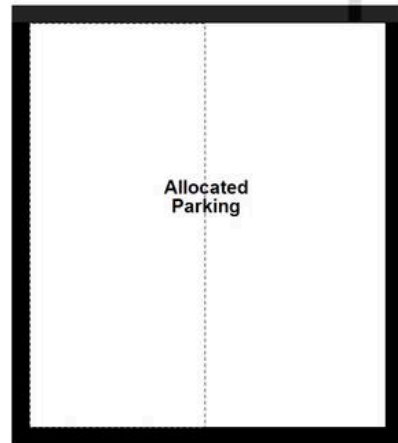
EPC Environmental Impact Rating: B



**mcfarlane**  
property.com

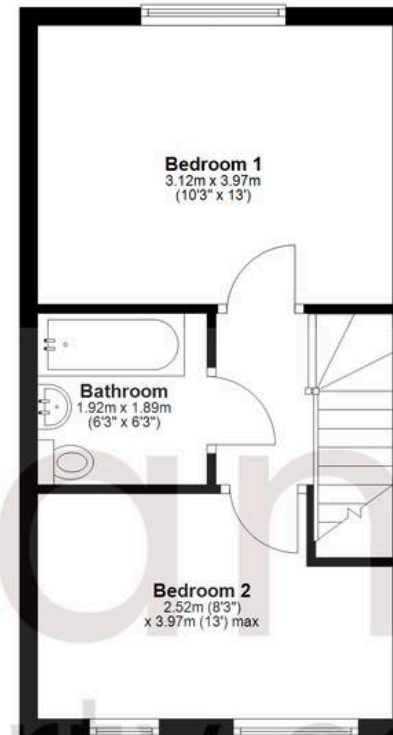
## Ground Floor

Approx. 48.7 sq. metres (523.9 sq. feet)



## First Floor

Approx. 30.8 sq. metres (331.1 sq. feet)



Total area: approx. 79.4 sq. metres (855.1 sq. feet)

Agents Note: Whilst every care has been taken to prepare these sales particulars, they are for guidance purposes only. All measurements are approximate and for general guidance purposes only and whilst every care has been taken to ensure their accuracy, they should not be relied upon and potential buyers are advised to recheck the measurements.