



Weavers Close, TW7

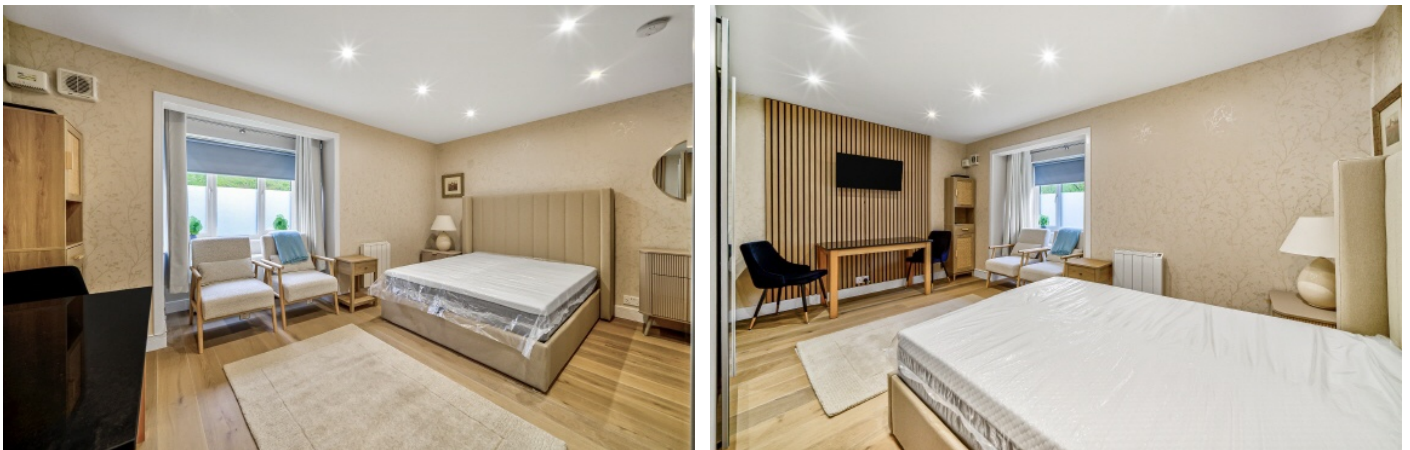
£1,350 Per calendar month

A beautifully refurbished studio apartment featuring high end furnishings, a modern kitchen and stylish bathroom, complemented by a communal front garden and parking, offering a comfortable and contemporary living space for a single or professional couple.

Weavers Close is conveniently located with excellent transport links via train, Underground, buses, and road access to Heathrow. Residents enjoy nearby green spaces, the River Thames, and a variety of shops, dining, and cultural attractions.

Features

- Studio Apartment
- Brand Newly Refurbished
- Newly Fitted Kitchen
- High End Furnishings
- Excellent Transport Links
- Private Parking



Weavers Close, TW7

This beautifully refurbished studio apartment is set within a charming residential building, featuring a communal front garden and private parking, offering both convenience and kerb appeal in a peaceful and well maintained setting.

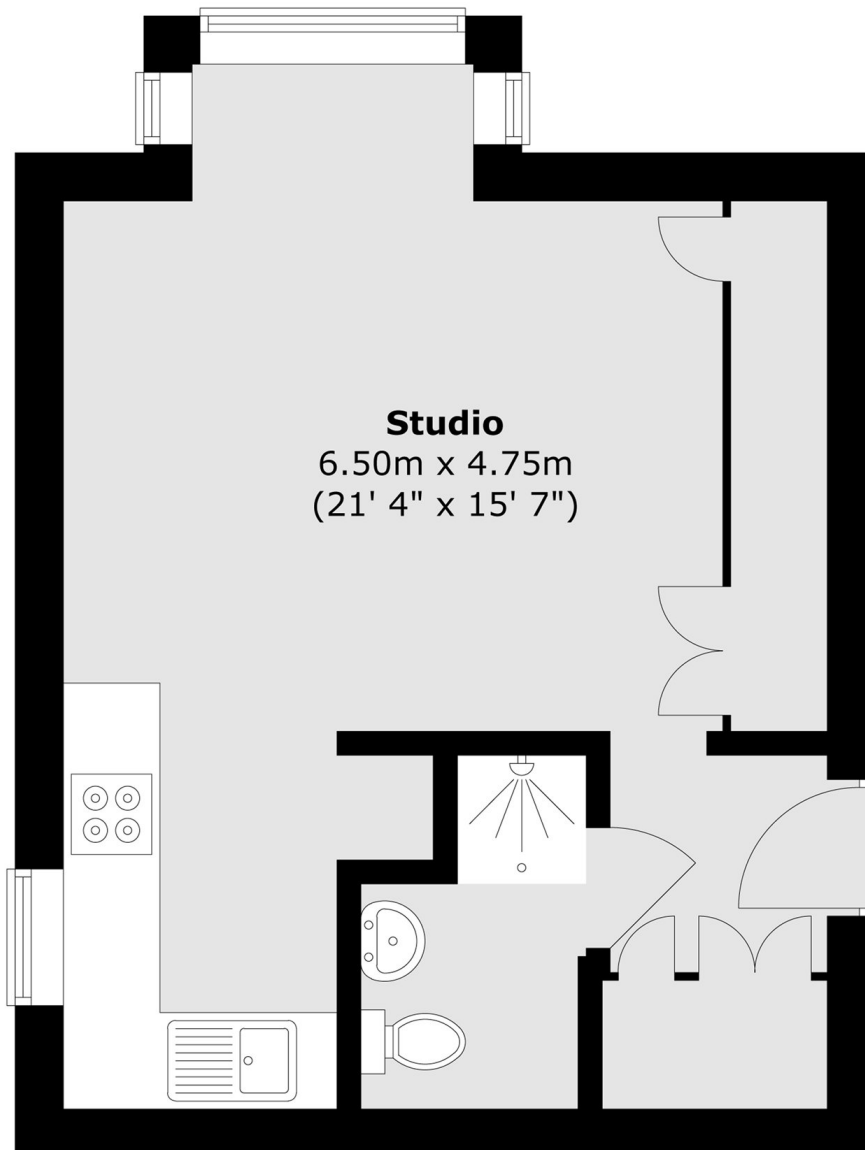
The main living space is thoughtfully designed with high end furnishings, including a stylish bed, seating area and workspace, enhanced by natural light and modern finishes to create a comfortable, elegant and versatile studio environment.

A newly fitted kitchen offers sleek cabinets and integrated appliances, accompanied by a contemporary bathroom finished to a high standard, providing practicality and style while completing this exceptional, fully furnished apartment.



Weavers Close, Isleworth, TW7

Ground Floor



Total area (approx.) : 28.5 sq. m (307 sq. ft)