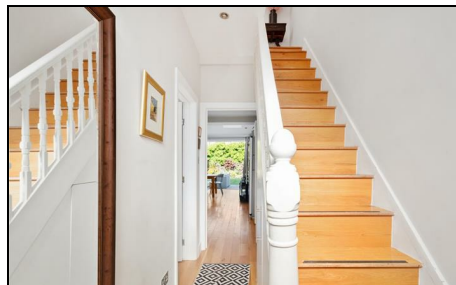


## Aston Road Raynes Park, SW20 8BG

**Offers Over £900,000 Freehold**

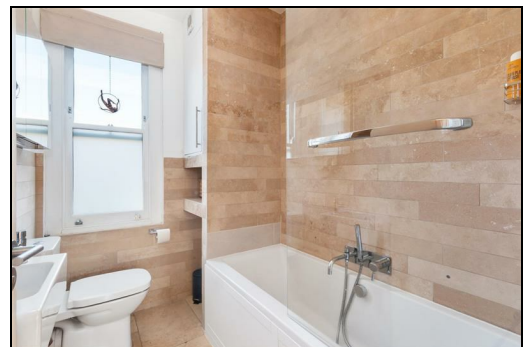
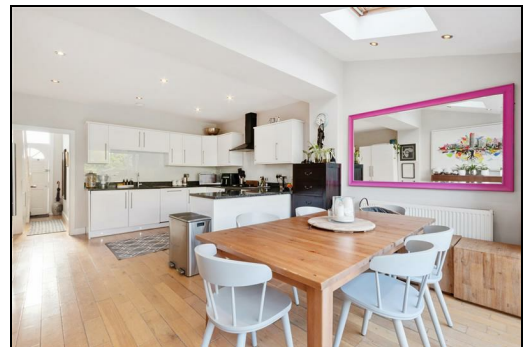
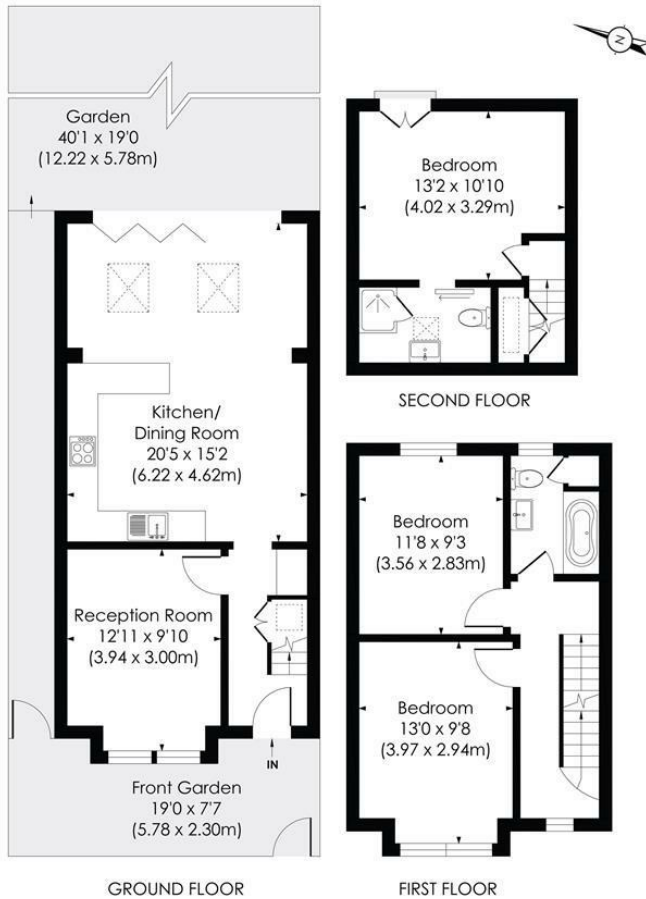


**A spacious, brick-fronted, fully extended three-bedroom end-of-terrace home, ideally situated within walking distance of the station and vibrant high street. The area offers a selection of restaurants, pubs, independent businesses and popular high street retailers.**

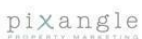
**Offered chain-free and neutrally decorated throughout, the property provides bright and versatile accommodation, perfect for families and commuters alike. Conveniently located close to highly regarded local schools, this attractive home combines comfort, practicality, and a sought-after location.**

**ASTON ROAD, SW20**

Approx. Gross Internal Floor Area  
**1079 Sq. ft/100.25 Sq. m**



© Pixangle Property Marketing Ltd. info@pixangle.com Tel: 0208 870 2118



This floor plan has been prepared for the purpose of illustration only in accordance with the latest RICS code of measuring practice and is not to scale. All measurements and areas are approximate and whilst every effort has been made to ensure the accuracy of the plan contained here, no responsibility is taken for any error, omission or misstatement.

- Three Bedroom
- Two Bathroom
- Fully Extended Apostle House
- Close to Raynes Park Station & Shops
- Neutrally Decorated
- Close To Highly Regarded Schools
- No Onward Chain
- EPC - D
- Council Tax Band - D

Energy Efficiency Rating		Current	Potential
Very energy efficient - lower running costs			
(92 plus) A			
(81-91) B			
(69-80) C			
(55-68) D		65	85
(39-54) E			
(21-38) F			
(1-20) G			
Not energy efficient - higher running costs			
England & Wales		EU Directive 2002/91/EC	

**For Free Mortgage Quote and Best Mortgage Rates, call Ellisons Mortgage Advisor on 0208 944 9595**



Although these particulars are believed to be correct, their accuracy is not guaranteed and they do not form part of any contract.

**Celebrating 30 years of successful Sales and Lettings in Merton**

