



For Sale
Residential
Saxton Mee
01246 290992
www.saxtonmee.co.uk

25 Atlantic Way, Sheffield, S8 7FZ



25 Atlantic Way

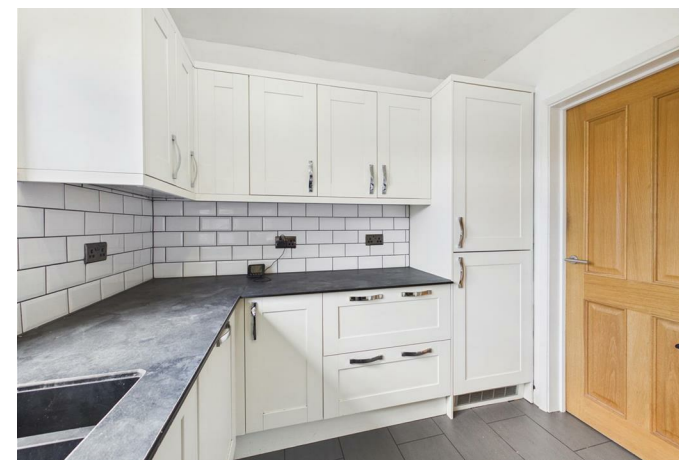
Chain Free

£169,995

Perfect for the first time buyer, family or couple, is this excellent three bedroomed town house which offers nicely proportioned and recently decorated accommodation and is favourably located on a small cul-de-sac within this popular and established locality.

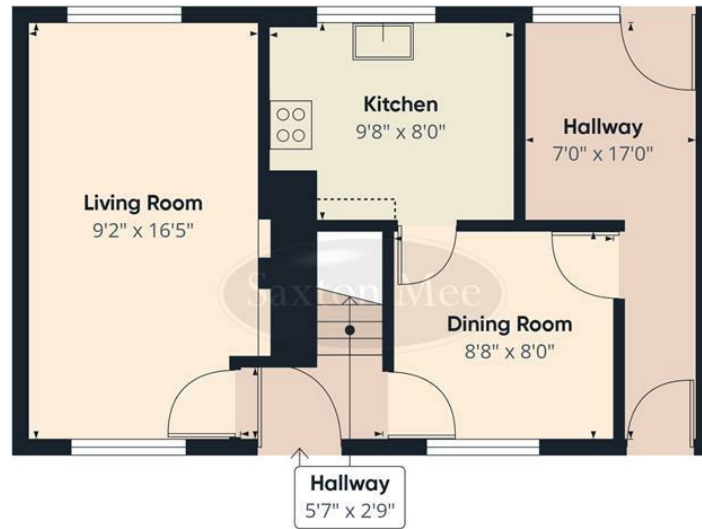
Offered for sale with vacant possession and no upward chain the property offers gas fired central heating, upvc double glazing and briefly comprises: entrance hall, good size living room, dining area, well equipped kitchen and side hall/utility area which has external doors to the front and rear. Opening off the landing on the first floor and two double bedrooms and third single bedroom, bathroom and separate WC.

Outside: broad block paved forecourt parking, good size enclosed level rear garden with artificial grass ideal for children and pets, useful store.

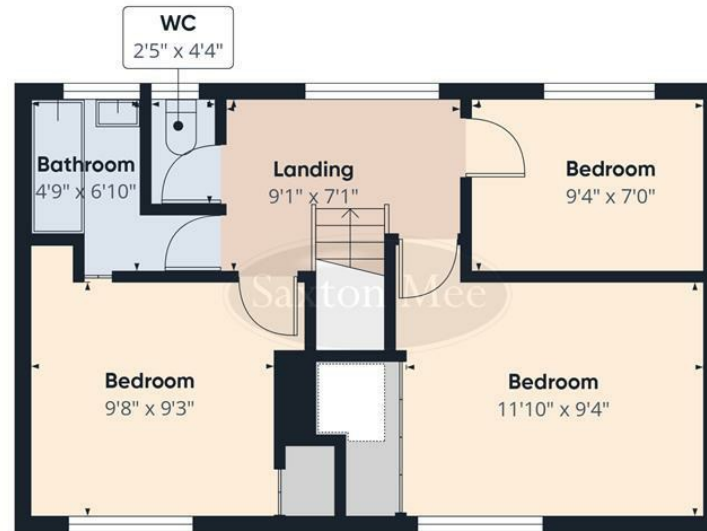


- Nicely proportioned three bedroomed mid town house
- Popular and established locality
- Perfect for family, first time buyer or couple
- Good range of nearby amenities
- Gas central heating and double glazing
- No upward chain
- Level enclosed rear garden with store
- Broad block paved forecourt parking
- EPC:
- Council Tax Band: Tenure: Freehold





Floor 0



Floor 1



Approximate total area⁽¹⁾
804 ft²

Reduced headroom
2 ft²

(1) Excluding balconies and terraces.

Reduced headroom
..... Below 5 ft

Calculations reference the RICS IPMS 3C standard. Measurements are approximate and not to scale. This floor plan is intended for illustration only.

GIRAFFE360

While we endeavour to make our sales particulars fair, accurate and reliable, they are only a general guide to the property and, accordingly, if there is any point, which is of particular importance to you, please contact the relevant office. The Agents have not tested any apparatus, equipment, fittings or services and so cannot verify they are in working order. The buyer is advised to obtain verification. Please note all the measurement details are approximate and should not be relied upon as exact. All plans, floor plans and maps are for guidance purposes only and are not to scale. Under no circumstances should they be relied upon as exact or for use in planning carpets and other such fixtures, fittings or furnishings. YOUR HOME IS AT RISK IF YOU DO NOT KEEP UP REPAYMENTS ON A MORTGAGE OR OTHER LOAN SECURED ON IT. 'A Life Assurance policy may be requested.' 'Written Quotations of credit terms available on request.'

Banner Cross
T: 0114 268 3241
E: bannercross@saxtonmee.co.uk
www.saxtonmee.co.uk

Dronfield
T: 01246 290992
E: dronfield@saxtonmee.co.uk

Hathersage
T: 01433 650009
E: hathersage@saxtonmee.co.uk

Bakewell
T: 01629 815307
E: bakewell@saxtonmee.co.uk

Matlock
T: 01629 828250
E: matlock@saxtonmee.co.uk

