

**LONDON  
VICTORIA  
GROUPS** 



## Balvaired Place , London SW1V 3SN

- Pimlico
- Three double bedrooms
- Garage
- CTB-G
- Three floors
- Close to local amenities
- EPC-C

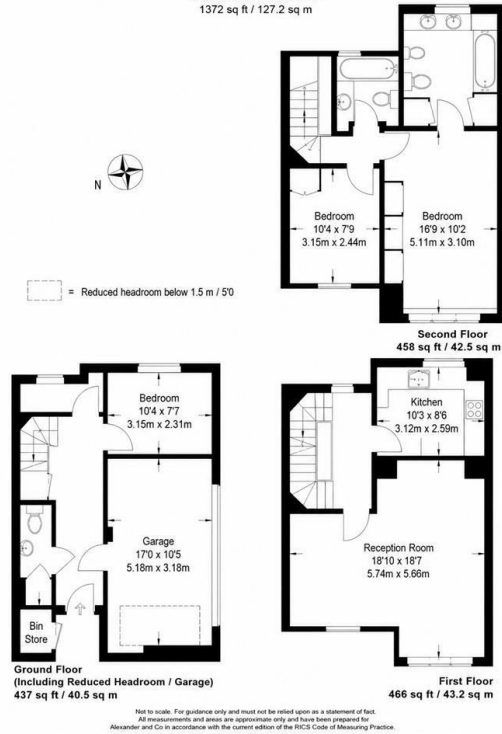
**£6,500 Per Month**



Local Authority **Westminster**  
Council Tax Band **G**  
EPC Rating **C**

### Balvaird Place

Approximate Internal Floor Area  
(Including Reduced Headroom / Garage) 1351 sq ft / 126.2 sq m  
Approximate Outbuildings Area  
Bin Store = 11 sq ft / 1 sq m  
Total Areas Shown On Plan  
1372 sq ft / 127.2 sq m



**London Office Office**  
Spaces Victoria, 25 Wilton Road, Pimlico,  
London, SW1V 1LW

**Contact**  
020 3084 3094  
XL@londonvictoriagroups.co.uk  
www.londonvictoriagroups.co.uk

Agents Note: Whilst every care has been taken to prepare these particulars, they are for guidance purposes only. All measurements are approximate and for general guidance purposes only and whilst every care has been taken to ensure accuracy, they should not be relied upon and potential buyers/tenants are advised to recheck the measurements.