

Current EPC Rating: C

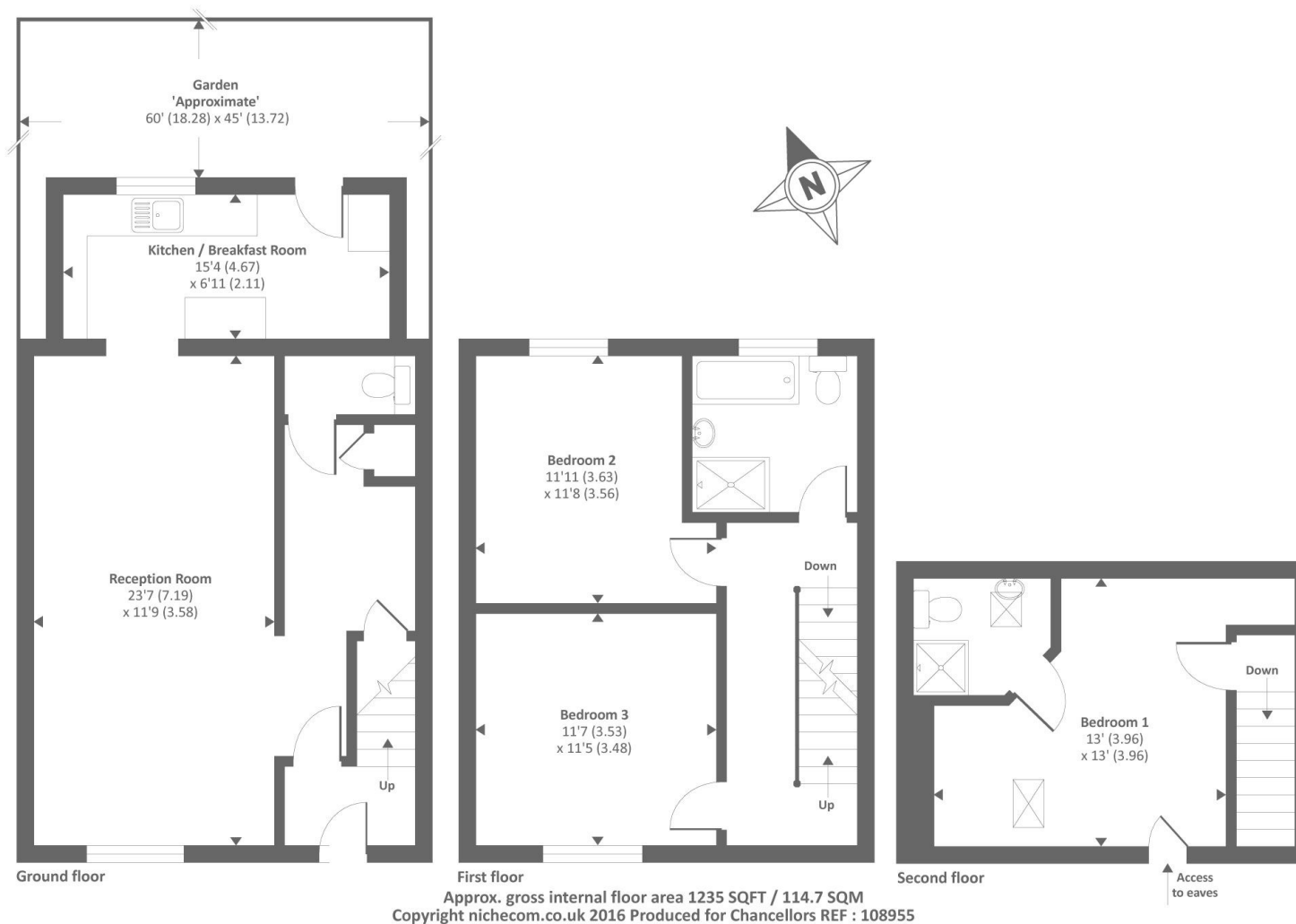


CHESHAM, BUCKINGHAMSHIRE

EXTENDED AND REFURBISHED THREE BEDROOM CHARACTER PROPERTY

A delightful extended and converted three bedroom period cottage, offered to market with no onward chain and situated in the South of Chesham.

Entrance Hall | Lounge/Dining Room | Kitchen/Breakfast Room | Cloakroom | Master Bedroom with En Suite | Family Bathroom | Front & Rear Gardens | Planning Permission for Rear Garage



Guide Price: £425,000 Freehold



At chancellors.co.uk/properties/r/2016308 you can find additional information about this property which you should consider before making any decision to progress an offer to buy it. We recommend that you review this information at your earliest convenience. You can also find on our website a link to our buyers guide which gives useful information on the buying process which you should be aware of before taking any decision to purchase a property

t: 01494 774343

e: chesham.sales@chancellors.co.uk

Reference:
18062250516

Important Notice

These particulars are offered on the understanding that all negotiations are conducted through this company. Neither these particulars, nor oral representations, form part of any offer or contract and their accuracy cannot be guaranteed. Any floor plan provided is for representation purposes only, as defined by the RICS Code of Measuring Practice and whilst every attempt has been made to ensure their accuracy the measurements of windows, doors and rooms are approximate and should be used as such by prospective purchasers. Any services, systems and appliances mentioned have not been tested by us and we cannot verify that they are in working order. Should you have a query or complaint about our service, please contact us at directors@chancellors.co.uk. We are also a member of the Surveyors Ombudsman Service which may be able to help you with a complaint if we are unable to. The Surveyors Ombudsman Service website is www.surveyors-ombudsman.org.uk

Chesham Sales
64 The Broadway, Chesham,
Buckinghamshire, HP5 1EG