



GLASFORD STREET, SW17

£570,000

- Victorian Maisonette
- 2 Double Bedrooms
- Large Reception Room
- Private Rear Garden
- No Onward Chain
- Share of Freehold





## ABOUT THE HOME

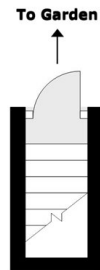
A well presented and spacious 2 double bedroom first floor Victorian maisonette, amassing an impressive 747 sqft. With the additional benefit of being sold with a share of freehold, no onward chain and the potential to extend into the demised loft space. Internally the property offers; A generous living room with period fireplace, separate kitchen / diner with direct access to the private rear garden. Two double bedrooms and finally a stylish family bathroom finish off this attractive first time buyers home.

Glasford Street is a sought after location due to its close proximity to Tooting over ground station, connecting to Blackfriars. Tooting Broadway tube station is a short walk as well as a number of independent cafés, 'Gails coffee shop and local convenience stores all located on your doorstep.

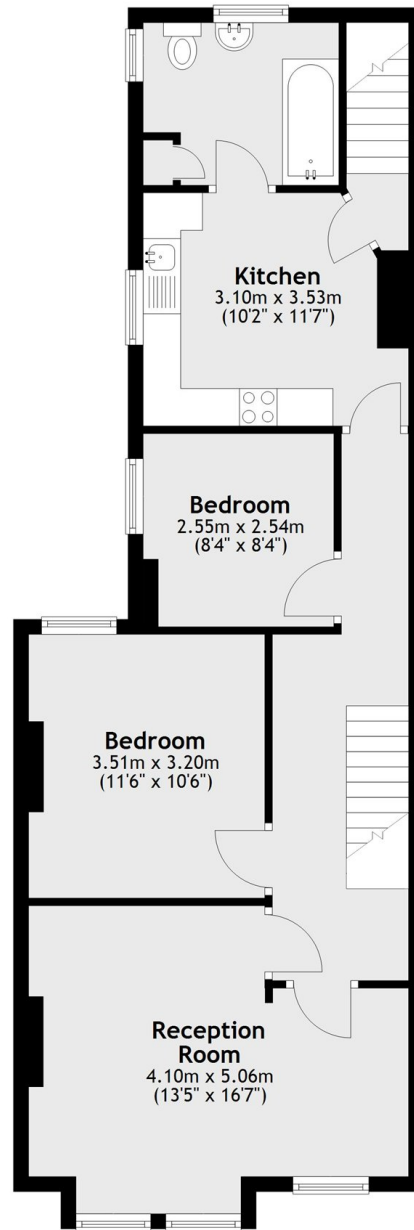




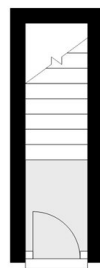
## Ground Floor



## First Floor



## Ground Floor



Total area: approx. 70.3 sq. metres (756.4 sq. feet)

**JACKSONS TOOTING**

3 Upper Tooting Road, London,  
SW17 7TS

Sales: 020 8487 3175

Lettings: 020 8487 3176

Energy Rating: We aim to make our particulars both accurate and reliable. However they are not guaranteed; nor do they form part of an offer or contract. If you require clarification on any points then please contact us, especially if you're traveling some distance to view. Please note that appliances and heating systems have not been tested and therefore no warranties can be given as to their good working order.