



**Guide Price**

**£500,000**

**Freehold**

4x  2x  2x 

**Maydowns Road,  
Chestfield, Whitstable,  
Kent, CT5**

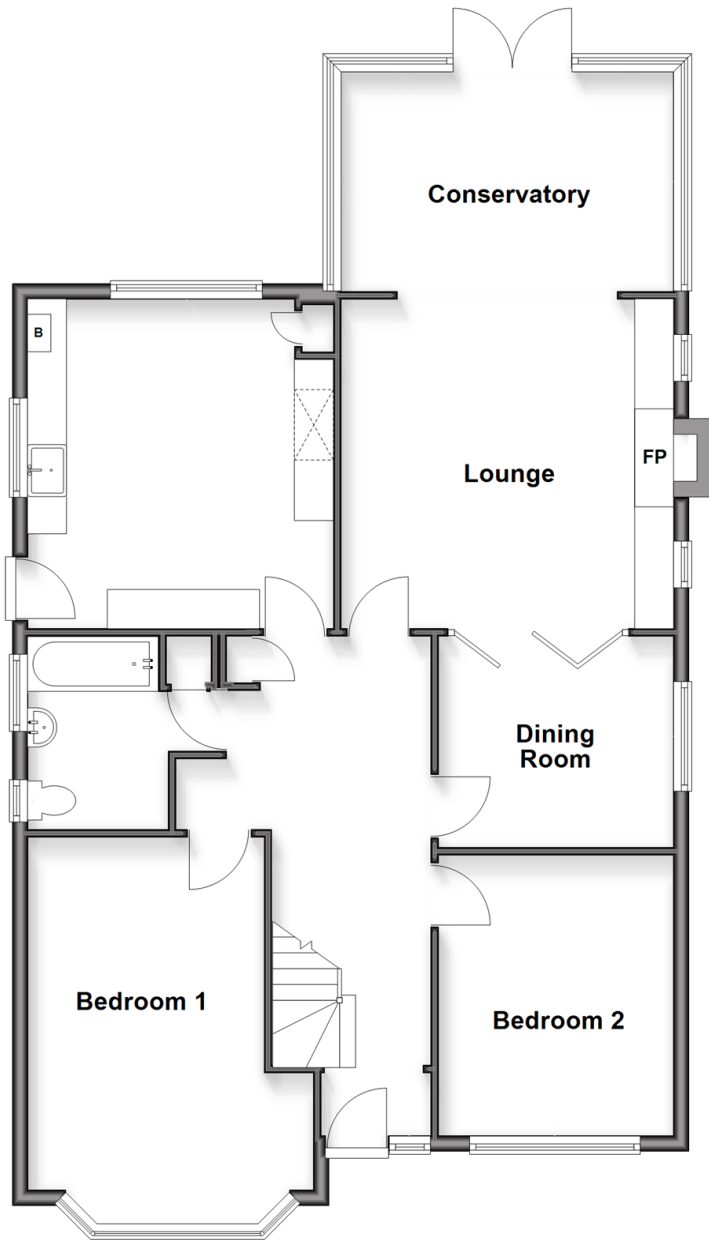
**OVER 60?**

Secure this property  
for up to **59% less!**

*Wards*  
Helping you move forwards

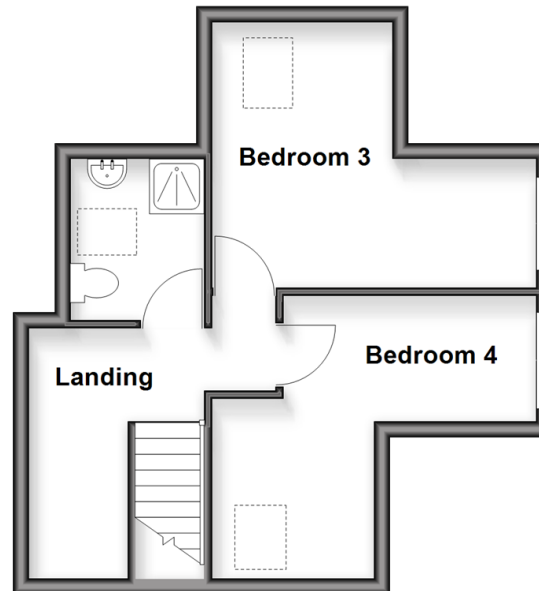
## Ground Floor

Approx. 104.1 sq. metres (1120.1 sq. feet)



## First Floor

Approx. 31.5 sq. metres (339.5 sq. feet)



## Accommodation

### GROUND FLOOR

Entrance Hall

Bedroom 1 : 16'4 x 10'0 (4.98m x 3.05m)

Bedroom 2 : 11'1 x 9'10 (3.38m x 3.00m)

Bathroom

Kitchen: 13'9 x 13'0 (4.19m x 3.97m)

Dining Room: 9'11 x 8'10 (3.02m x 2.69m)

Lounge: 14'0 x 13'11 (4.27m x 4.24m)

Conservatory: 14'6 x 9'2 (4.42m x 2.80m)

### FIRST FLOOR

Landing

Shower Room

Bedroom 3 : 10'5 x 5'3 (3.18m x 1.60m)

Bedroom 4: 11'2 x 7'7 (3.41m x 2.31m)  
narrowing to 6'0 x 5'5 (1.83m x 1.65m)

### OUTSIDE

Garage & Driveway

Front & Rear Garden



## Main features

- Chain-free
- Garage and driveway
- Spacious conservatory adjoined to the lounge, with a feature brick fireplace and folding door access into the dining room
- Separate ground floor bathroom and first floor shower room
- Two generous bedrooms on the ground floor and two bedrooms on the first floor



### Nearest Schools

Primary Schools: Swalecliffe Community Primary 0.6 miles, Briary Primary 1.1 miles, Hampton Primary 1.4 miles

Secondary Schools: The Whitstable School 1.5 miles



### Transport Information

Train Stations: Chestfield & Swalecliffe 0.3 miles, Whitstable 1.6 miles, Herne Bay 1.9 miles



### Address

Maydowns Road, Chestfield, Whitstable, Kent, CT5



### Directions

For directions to this property please contact us.



**Wards**  
Helping you move forwards

Call Whitstable Branch 01227 772272 ■ [wardsof Kent.co.uk](http://wardsof Kent.co.uk)



- Legal advice should be taken to verify fixtures/fittings, planning, alterations and/or lease details
- Appliances & services are untested, dimensions are approximate and floor plans are not to scale
- Through a Homewise Home For Life Plan people aged 60+ can secure this property for up to 50% less, by purchasing a Lifetime Lease

EPC RATING

CURRENT: D(56) POTENTIAL: C(78)

12033293/20260102/NF/NF