



Berridge Fields, Potton, SG19 2FG  
£575,000

 4  3  2  B

LATCHAM  
DOWLING

ESTATE AGENTS

**\*\*\*CHAIN FREE\*\*\***

**\*\*STUNNING FOUR BEDROOM DETACHED FAMILY HOME WITHIN THE EVER POPULAR 'CALA HOMES' DEVELOPMENT ON THE WESTERN EDGE OF THIS POPULAR GEORGIAN TOWN\*\***

The property has a real "Wow" factor and the kitchen/family room is the real 'hub' of this family home and has a wonderful feel of space and a great area for entertaining. As you first walk in, the first thing that strikes you is the space on offer, with a large, bright reception hall, well proportioned reception room and as mentioned before the "STUNNING" open plan kitchen/ family room with contrasting work surfaces and a comprehensive range of integrated Bosch appliances (along with a separate utility room). The kitchen/ family room has a set of "French" doors that open directly out onto the rear garden, so this is the perfect combination for bringing the outdoors indoors!!

On the first floor, there is a large galleried landing that gives access to all four bedrooms, with en suites to both the first and second bedrooms and even a walk dressing room to the main bedroom.

This is a wonderful family home that offers great accommodation and has been built to a high specification with lots of extras like "Karndean" flooring and more.

There is an attractive rear garden offering a high degree of privacy and an extensive patio/ entertaining area.

To the front of the property, there is an extensive block paved driveway leading to the large integral garage.

Potton is a delightful market town that offers many amenities, such as a doctors surgery, school, several nurseries two convenience food stores, newsagents, butchers, hardware store, craft and gift shop as well as a host of eateries, takeaways and public houses. It is situated just 3 miles from Sandy and 4 miles from Biggleswade both of which have mainline train stations giving access to London St Pancras. Cambridge is approximately a 30 minute drive away.

Viewing is highly recommended to appreciate everything this fabulous home has to offer!!





**Entrance**

**Entrance Hall**

**W.c**

**Lounge**

17'6 x 10'4 (5.33m x 3.15m)

**Kitchen/Family room**

23'4 x 12'10 (7.11m x 3.91m)

**Utility Room**

**First floor**

**Landing**

**Bedroom One**

11'8 x 10'4 (3.56m x 3.15m)

**En Suite**

**Bedroom Two**

12'10 x 11'0 (3.91m x 3.35m)

**En Suite**

**Bedroom Three**

10'10 x 10'8 (3.30m x 3.25m)

**Bedroom Four**

10'5 x 8'1 (3.18m x 2.46m)

**Family Bathroom**

**Outside**

**Rear Garden**

**Front Garden**

**Garage**

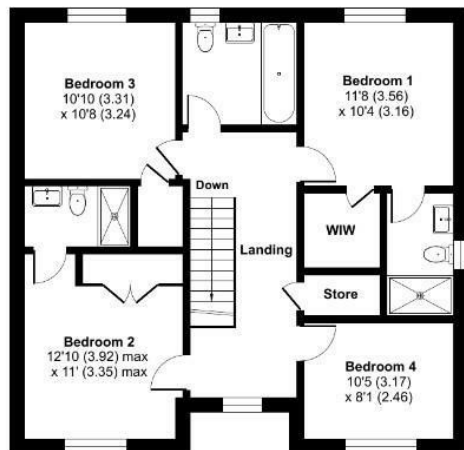
22'10 x 10'9 (6.96m x 3.28m)

**Parking**

# Berridge Fields, Potton, Sandy, SG19

Approximate Area = 1450 sq ft / 134.7 sq m  
 Garage = 240 sq ft / 22.2 sq m  
 Total = 1690 sq ft / 157 sq m

For identification only - Not to scale

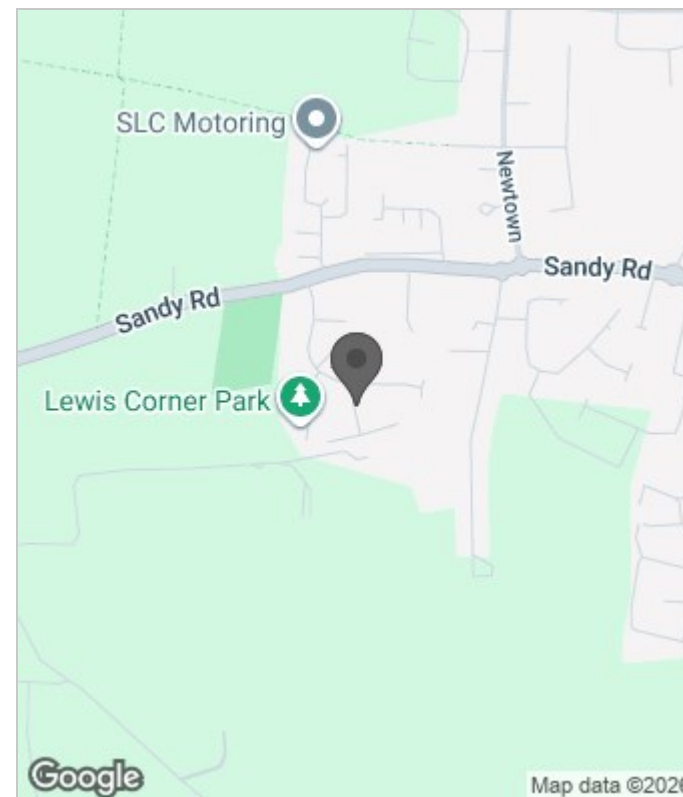


FIRST FLOOR



GROUND FLOOR

Floor plan produced in accordance with RICS Property Measurement 2nd Edition, incorporating International Property Measurement Standards (IPMS2 Residential). © nichecom 2025. Produced for Latcham Dowling Ltd. REF: 1453529



Energy Efficiency Rating		
	Current	Potential
Very energy efficient - lower running costs		
(92 plus) <b>A</b>		<b>93</b>
(81-91) <b>B</b>	<b>86</b>	
(69-80) <b>C</b>		
(55-68) <b>D</b>		
(39-54) <b>E</b>		
(21-38) <b>F</b>		
(1-20) <b>G</b>		
Not energy efficient - higher running costs		
<b>England &amp; Wales</b>	EU Directive 2002/91/EC	

These particulars, whilst believed to be accurate are set out as a general outline only for guidance and do not constitute any part of an offer or contract. Intending purchasers should not rely on them as statements of representation of fact, but must satisfy themselves by inspection or otherwise as to their accuracy. No person in this firm's employment has the authority to make or give any representation or warranty in respect of the property.