



Balmoral Close, SW15

£949,950

Dexters



Balmoral Close, SW15

A bright and well-presented three bedroom townhouse arranged over three floors, offering over 1,120 sq ft of flexible living space in a quiet residential close in West Putney. The property features a spacious open-plan reception and dining room with excellent natural light, a modern fitted kitchen, three well-proportioned bedrooms, two bathrooms, a guest WC, and a useful integral garage/storage area. The private rear garden provides an ideal space for outdoor dining and entertaining. The Property also Benefits from off-street parking.

The accommodation is thoughtfully laid out, with the main living space occupying the entire first floor and enjoying a bright, airy feel enhanced by large windows and contemporary finishes throughout. The principal bedroom benefits from generous proportions, while the additional bedrooms offer excellent versatility for family living, guests or home working. The property also benefits from ample built-in storage and a practical townhouse layout well suited to modern living.

Balmoral Close is conveniently positioned close to the green open spaces of Putney Heath and within easy reach of Putney High Street's popular cafés, shops and restaurants. Putney mainline station and East Putney Underground station are both nearby, providing straightforward access into Central London.

Features

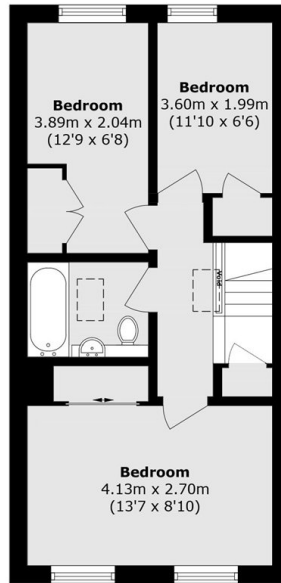
- Freehold
- Three Bedrooms
- Off Street Parking
- 1124 Sq. ft
- Private Garden
- Chain Free



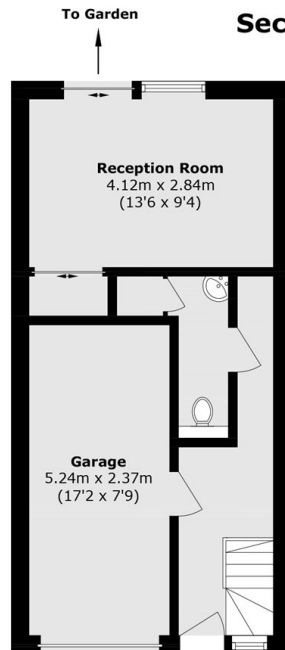




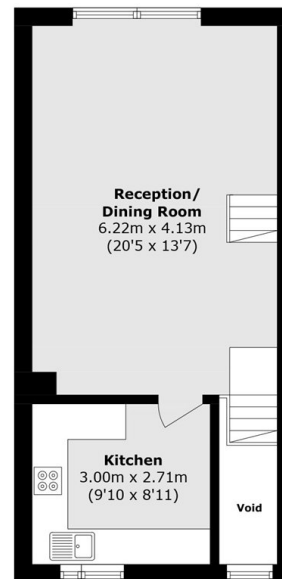
Balmoral Close, London, SW15



Second Floor



Ground Floor



First Floor

Total area (approx.): 104.5 sq. m (1124.8 sq. ft)
(Excluding Void)