

Brantwood Close, Ingleby Barwick



£350,000

IH INGLEBY HOMES





Located within this sought after Ingleby Barwick location, whilst boasting a lovely plot and position at the head of this quiet cul-de-sac, this very attractive family property is perfectly positioned for fantastic local amenities and 'highly thought of' primary and secondary schooling.

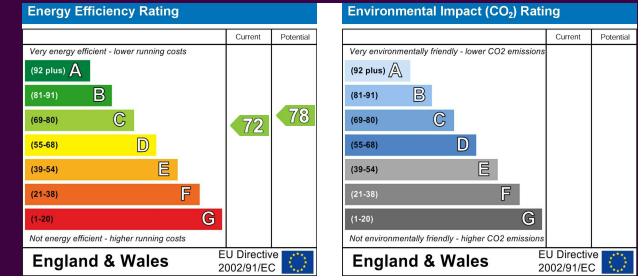
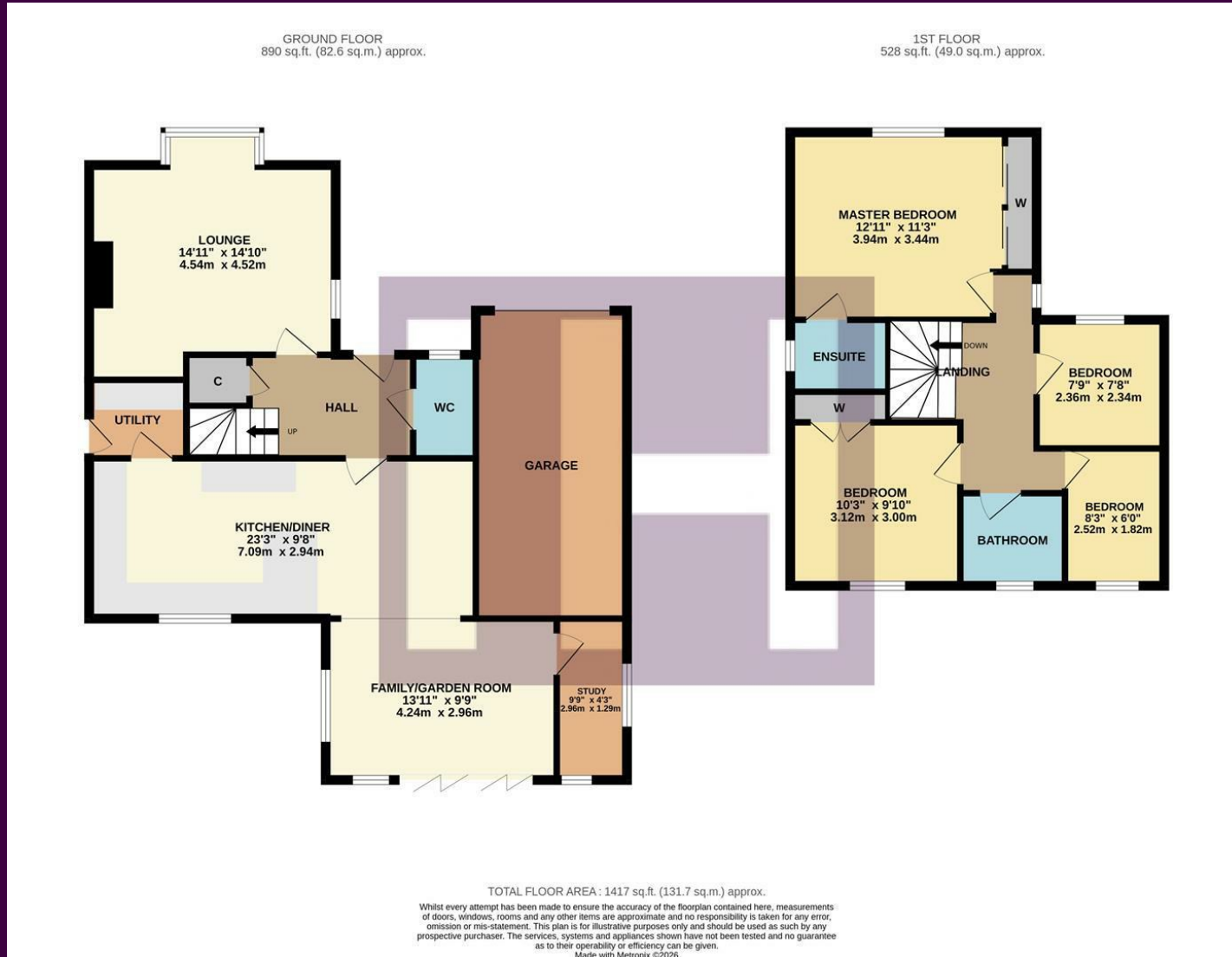
Enjoying a large front drive that accommodate several vehicles whilst approaching the garage, a generous established front garden, and attractive south/westerly rear garden, the external aspects of this impressive home will undoubtedly prove popular. However the extended and upgraded interior should not be overlooked.

A well extended rear extension has helped deliver a useful ground floor study, and additional family/garden room - which is open-plan to the modern refitted kitchen, with a quality range of units and solid wood surfaces and breakfast bar, utility off.

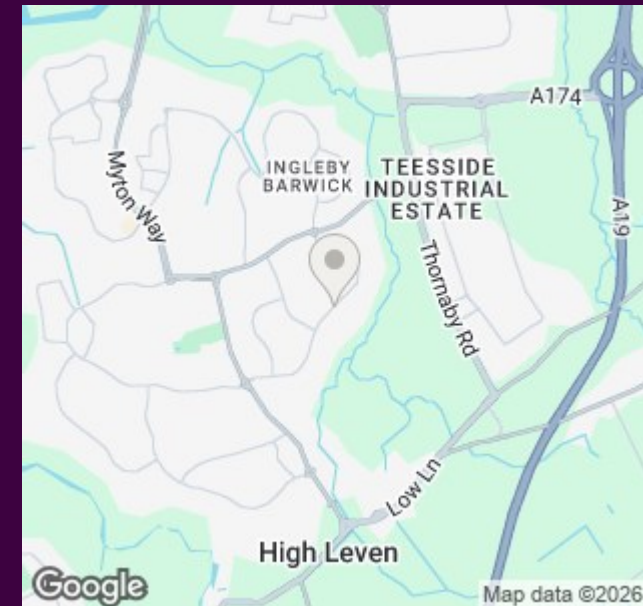


The accommodation now comprises an entrance hall, cloakroom/WC, independent lounge with feature fireplace and wood burning stove, the open-plan kitchen/diner, utility, family/garden room and study to the ground floor. The first floor brings four bedrooms, 'Master' with fitted robes and upgraded ensuite.

The Layout



The Location



Council Tax Band:

E

Tenure:

Freehold



- Cul-de-sac position within favoured Ingleby Barwick location
- Envious plot, large drive, garage and established gardens
- Extended ground floor adding a family/garden room, and study
- Spacious lounge with feature fireplace and wood burning stove
- Impressive refitted kitchen with solid wood surfaces
- 'Master' bedroom with robes and ensuite



www.ingleby-homes.co.uk
01642 671025

IH INGLEBY HOMES