



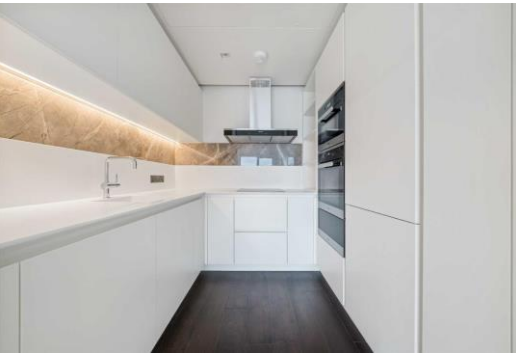
# Casson Square

London, SE1

£5,416 per month  
(£1,249.85 per week)

This stunning two-bedroom apartment occupies the 13th floor of the Luxurious Casson Square development. Meticulously designed, the living space prioritises comfort, sophistication and convenience whilst offering chic high-end finishes, and breathtaking views over the River Thames.

**CHESTERTONS**



# Casson Square

London, SE1

- Two Bedroom
- Modern
- Unfurnished
- Balcony



This apartment goes beyond basic functionality offering an elevated lifestyle through premium features, and exclusive amenities which includes the fully equipped gym, Olympic-sized swimming pool, sauna, treatment rooms and 24hour concierge.

Located in the heart of London, close to the London eye, Jubilee gardens and Waterloo Station where you can also travel around London with ease.

**Minimum Term:** 12 months  
**Deposit Required:** £0.00  
**Local Authority:** Lambeth Council  
**Council Tax Band:** G  
**EPC Rating:** B  
**Unfurnished**

Score	Energy rating	Current	Potential
92+	A		
81-91	B	87 B	87 B
69-80	C		
55-68	D		
39-54	E		
21-38	F		
1-20	G		

### *Chestertons Tower Bridge Lettings*

220 Tower Bridge Road  
 Tower Bridge  
 London  
 SE1 2UP  
 towerbridgelettingsusers@chestertons.co.uk  
 02073576911  
 chestertons.co.uk

Additional tenant charges apply (fees apply to non-AST tenancies only)  
 Tenancy Agreement Fee: £300  
 References per Tenant/Guarantor: £60  
 Inventory check (approx. £100 – £250 inc. VAT)  
[chestertons.co.uk/property-to-rent/applicable-fees](http://chestertons.co.uk/property-to-rent/applicable-fees)

Chesterton UK Services Limited trading as Chestertons for themselves and for the vendor of this property whose agents they are, give notice that (i) these particulars do not constitute any part of an offer or contract, (ii) all statements contained within these particulars are made without responsibility on the part of Chestertons or the vendor, (iii) whilst made in good faith, none of the statements contained within these particulars are to be relied upon as a statement or representation of fact, (iv) any intending purchasers must satisfy themselves by inspection or otherwise as to the correctness of each of the statements contained within these particulars, (v) the vendor does not make or give either Chestertons or any person in their employment any authority to make or give representation or warranty whatsoever in relation to this property. Wide angle lenses may be used. ©Copyright Chestertons | Chesterton Global Ltd | Registered Office 40 Connaught Street, Hyde Park, London W2 2AB Registered Company Number 05334580.



This paper is  
100% recyclable