



Barrowell Green, N21

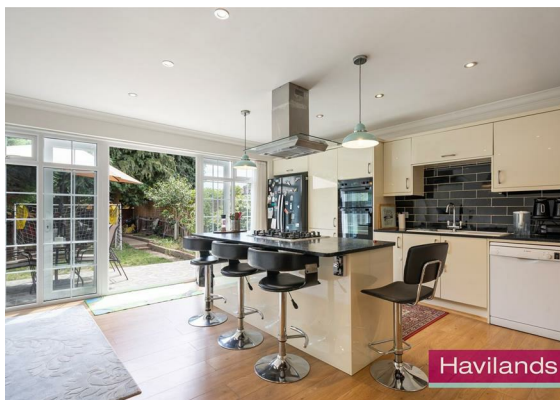
£800,000

Havilands

the advantage of experience



- Four Bedroom, Two Bathroom End of Terrace Property
- Garage to Rear
- 51ft South Facing Garden
- Close to Local Shops, Amenities, and a Wealth of Green Spaces including Firs Farm Wetlands
- Excellent Transport Links with ease of access to A10 and A406 plus Palmers Green National Rail (Moorgate approx. 20 mins) and Various Bus Routes along Green Lanes within Easy Reach
- In Catchment of several sought after Schools including Highfield Primary School, Firs Farm Primary, The Latymer School and Winchmore Secondary School



For more images of this property please visit havilands.co.uk



Havilands are delighted to present for sale this FOUR BEDROOM END OF TERRACE PROPERTY on Barrowell Green, N21. Bright and spacious throughout, with a modern island kitchen, the property offers 1,804 sq ft of living space and benefits from a garage and a 51ft south facing garden.

The ground floor is comprised of a front-facing Living Room, an L-shaped open Kitchen/Dining area to the rear and downstairs w/c. On the first floor there are three bedrooms, and a family bathroom. On the top floor, a converted loft provides a spacious master bedroom with en-suite. Outside the south facing garden extends to 51ft and has side access and rear access.

Conveniently located on the Palmers Green/Winchmore Hill border, the property is close to local shops, amenities, and a wealth of green spaces including Firs Farm Wetlands, which features a cricket ground, running track, and tennis courts. The property offers excellent transport links with ease of access to A10 Great Cambridge Road and A406 North Circular Road. Plus Palmers Green National Rail (Moorgate approx. 20 mins) and various bus routes and amenities along Green Lanes are within easy reach.

For families the property is in catchment of several sought after schools including Highfield Primary School, Firs Farm Primary, The Latymer School and Winchmore Secondary School. Viewing highly recommended.

Tenure: Freehold

Local Authority: Enfield

Council Tax Band: E (2026/27 £2,645)

EPC: TBC

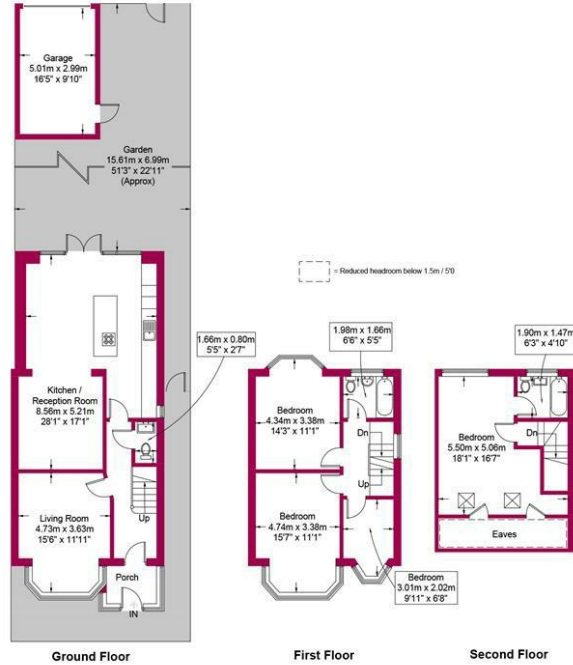
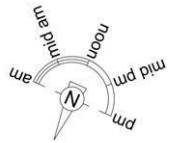
For more images of this property please visit [havilands.co.uk](https://www.havilands.co.uk)

Barrowell Green, N21

Approximate Gross Internal Area = 1804 sq ft / 167.6 sq m
(Including Restricted Height / Garage / Eaves)

Restricted Height/ Eaves = 59 sq ft / 5.5 sq m

Garage = 161 sq ft / 15.0 sq m



Energy Efficiency Rating		
	Current	Potential
Very energy efficient - lower running costs		
(92 plus) A		
(81-91) B		
(69-80) C		
(55-68) D		
(39-54) E		
(21-38) F		
(1-20) G		
Not energy efficient - higher running costs		
England & Wales	EU Directive 2002/91/EC	



This plan is for layout guidance only and is not drawn to scale unless stated. All dimensions, including windows, doors, and the Total Gross Internal Area (GIA), are approximate. For precise measurements, please consult a qualified architect or surveyor before making any decisions based on this plan.



havilands | 020 8886 6262
come by and meet the team
30 The Green, Winchmore Hill, London, N21 1AY

