



Glenfield Road, Western Park

£495,000 Freehold

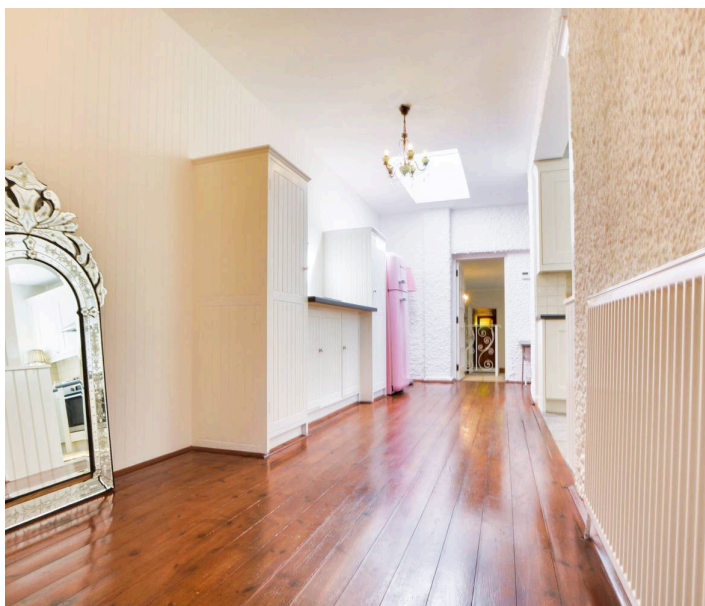
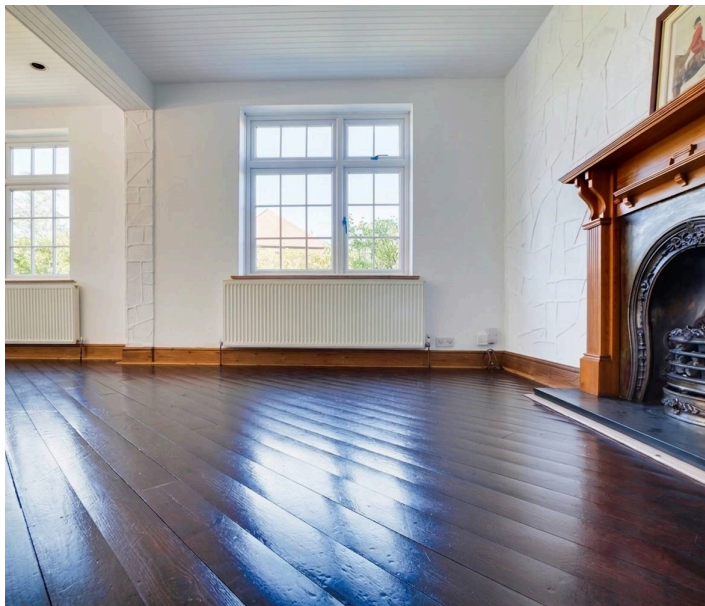
A spacious four-bedroom detached period home on a corner plot in Western Park, offering wrap-around gardens, a double garage, and versatile living space with links to the motorway and city centre.



Knightsbridge
Estate Agents

0116 274 5544





Porch

Hardwood door leading into the hallway.

Hallway

Impressive stained wooden floor, natural light via double-glazed window to front elevation, built-in cupboard, and stairs to first floor.

Reception Room One

22' 1" x 12' 6" (6.74m x 3.80m)

(maximising to 4.23m). Light and airy, double-glazed windows to front and side, stained floor, spotlights, and a capped-off gas fire (could be reconnected).

Breakfast Lobby

22' 7" x 7' 1" (6.88m x 2.15m)

Features an overhead skylight, stained floor, and a base unit with roll-edge work surface that could serve as a breakfast bar. Access to the front garden.

Kitchen

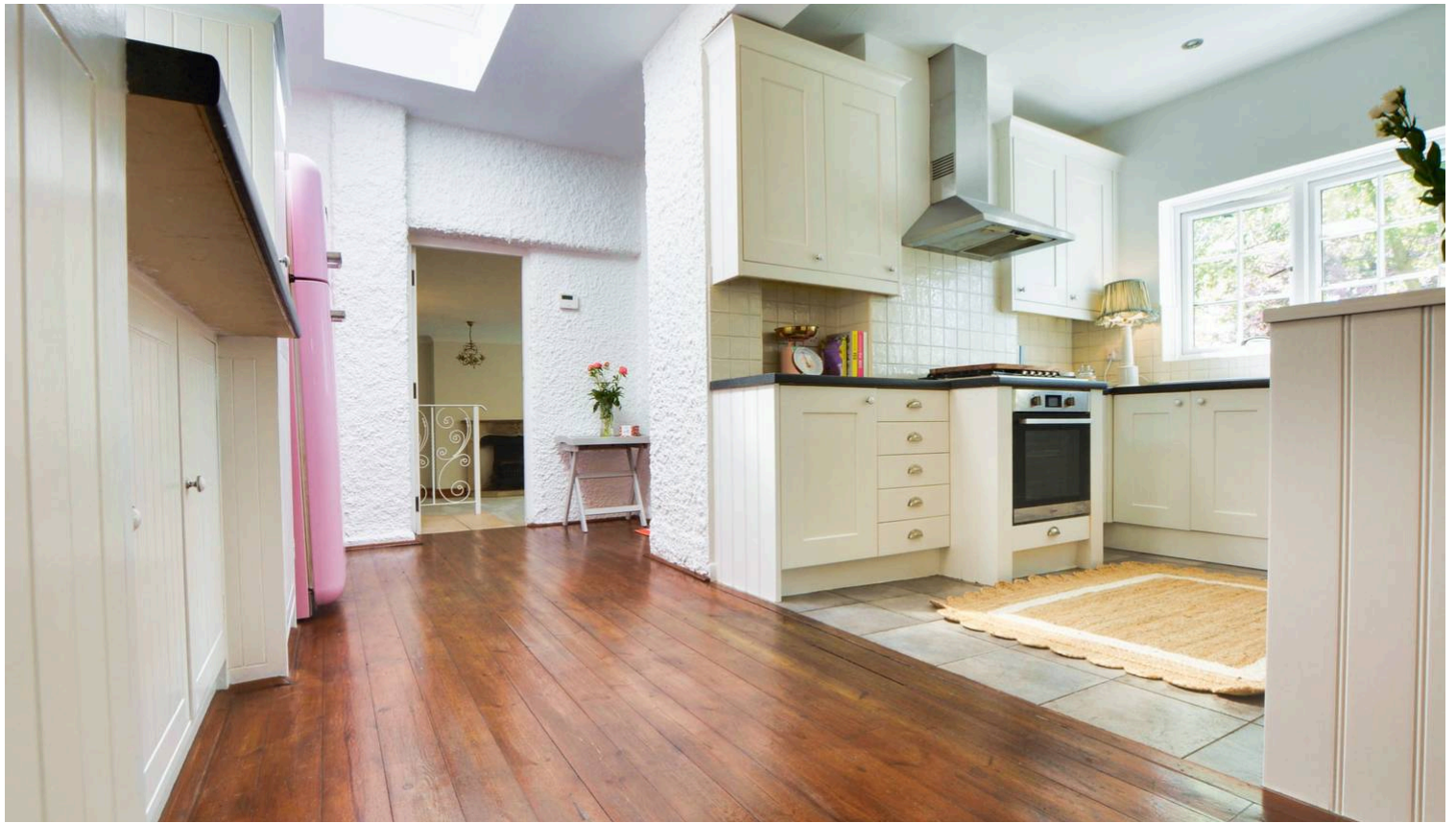
9' 9" x 8' 9" (2.97m x 2.66m)

Double-glazed window to front, range of base/wall units, granite-effect work surfaces, enamel sink/drain, inset gas hob, and oven with extraction hood. Includes plumbing for the washing machine and spotlights.

Reception Room Two

22' 8" x 14' 9" (6.91m x 4.49m)

Chimney breast with capped-off gas fire, natural stone surround/hearth, three drop-down chandeliers, four radiators, and access to the garden and an additional lobby.



Lobby Area

Provides access to a downstairs WC, sauna, and shower.

WC

With a low-level WC and a wash hand basin.

Sauna

5' 6" x 4' 11" (1.67m x 1.49m)

Accommodating up to three people.

Shower Room

Located off the lobby with a shower head and screen.

First Floor Landing

Bedroom One

12' 9" x 10' 10" (3.88m x 3.30m)

Double-glazed window to side elevation, dado rail, and radiator.

Bedroom Two

13' 11" x 11' 0" (4.24m x 3.36m)

Double-glazed window to the side, dado rail, and radiator.

Bedroom Three

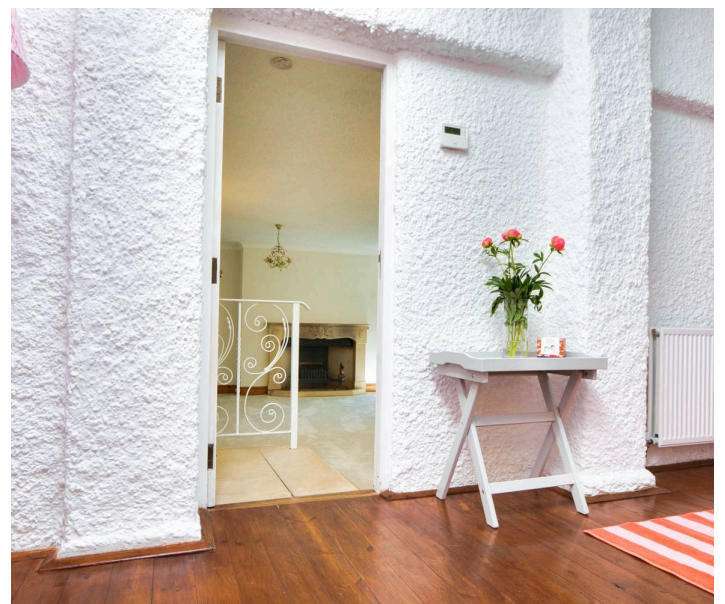
12' 8" x 7' 1" (3.85m x 2.17m)

Skylight window, additional double-glazed window and door to the side, and radiator.

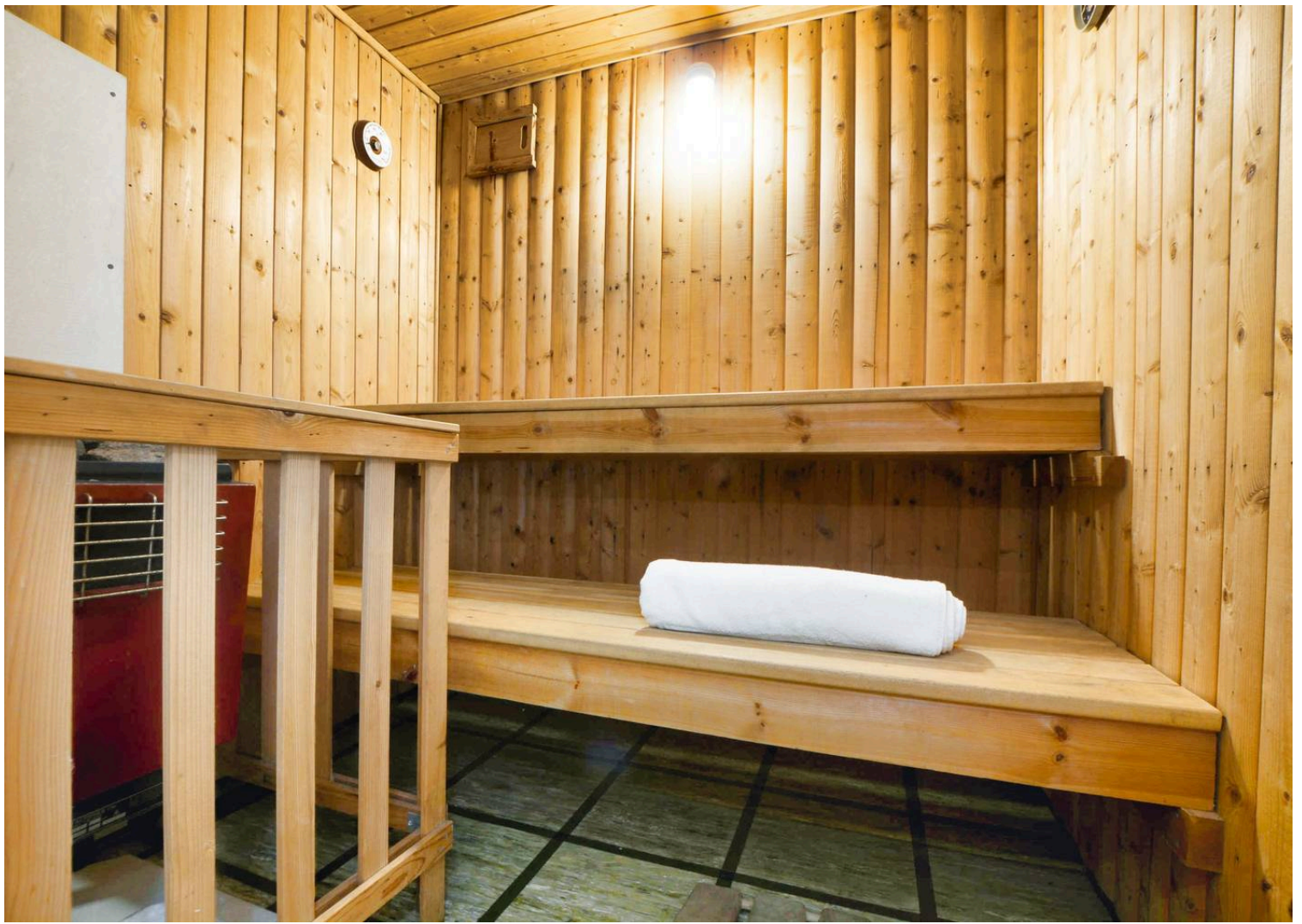
Bedroom Four

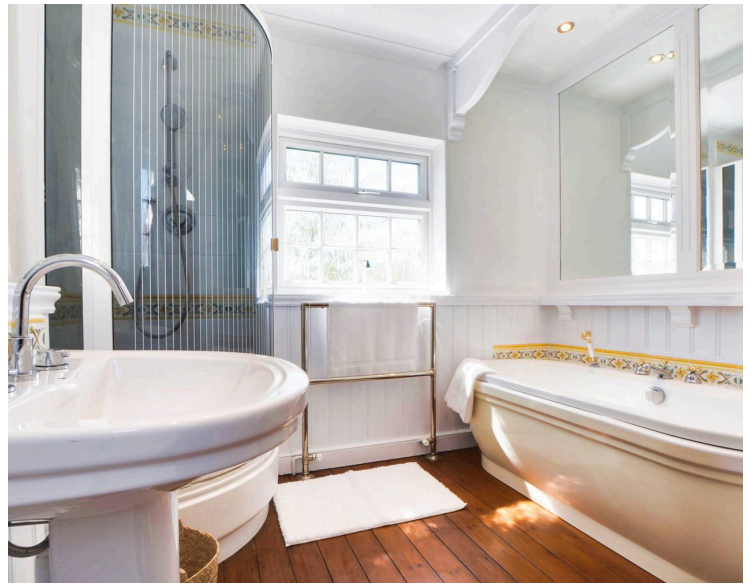
8' 10" x 7' 9" (2.68m x 2.35m)

Double-glazed window to the front and radiator.









Bathroom

8' 10" x 8' 8" (2.70m x 2.65m)

Four-piece suite including bath, separate shower cubicle, low-level WC, wash hand basin, stained wooden floor, and heated chrome towel rail.

Front Garden

Mature and established with a wraparound pathway and flower beds.

Rear Garden

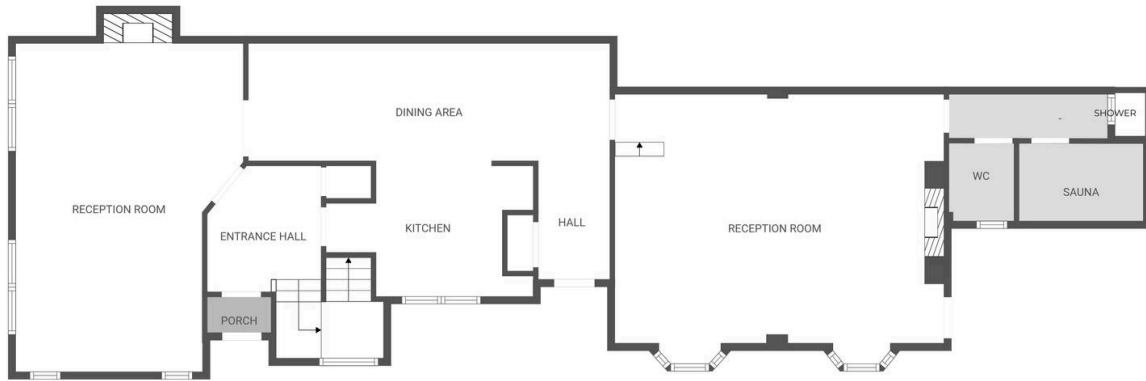
Two side gardens; left side features a well-maintained lawn; right side features a decked patio and gravelled/paved seating area.

Driveway

For one vehicle.

Double Garage

Double garage with up-and-over door.



FLOOR PLAN CREATED BY CUBICASA APP. MEASUREMENTS DEEMED HIGHLY RELIABLE BUT NOT GUARANTEED.



FLOOR PLAN CREATED BY CUBICASA APP. MEASUREMENTS DEEMED HIGHLY RELIABLE BUT NOT GUARANTEED.





The property is well placed for amenities and services, including local schooling, University of Leicester, the Royal Infirmary and Leicester General hospitals, as well as shopping facilities along Narborough Road, the district of West End and Braunstone Gate. Rail links to London, Birmingham and Nottingham, regular bus routes running to and from Leicester City Centre and Fosse Retail Park are also within easy reach with motorway access close by including M1 & M69.

Council Tax band: E

Tenure: Freehold

EPC Energy Efficiency Rating: D

We'll keep you moving...



We must inform all prospective purchasers that the measurements are taken by an electronic take and are provided as a guide only and they should not be used as accurate measurements. We have not tested any mains services, gas or electric appliances, or fixtures and fittings mentioned in these details, therefore, prospective purchasers should satisfy themselves before committing to purchase. Intending purchasers must satisfy themselves by inspection or otherwise to the correctness of the statements contained in these particulars. Knightsbridge Estate Agents (nor any person in their employment) has any authority to make any representation or warranty in relation to the property. The floor plans are not to scale, and are intended for use as a guide to the layout of the property only. They should not be used for any other purpose. We are required by law to conduct anti-money laundering checks on all those selling or buying a property. Whilst we retain responsibility for ensuring checks and any ongoing monitoring are carried out correctly, the initial checks are carried out on our behalf by Lifetime Legal who will contact you once you have agreed to instruct us in your sale or had an offer accepted on a property you wish to buy. The cost of these checks is £60 (incl. VAT), which covers the cost of obtaining relevant data and any manual checks and monitoring which might be required. This fee will need to be paid by you in advance of us publishing your property (in the case of a vendor) or issuing a memorandum of sale (in the case of a buyer), directly to Lifetime Legal, and is non-refundable. We will receive some of the fee taken by Lifetime Legal to compensate for its role in the provision of these checks.