



New Road, Rochester ME1 1DX

£1,200 Per Month

CR Real Estate are delighted to offer this well-presented one-bedroom first-floor flat with allocated parking, situated in the popular area of Rochester.

The property offers spacious and comfortable accommodation throughout, comprising a bright and generously sized lounge, a separate fitted kitchen, a good-sized double bedroom, and a bathroom.

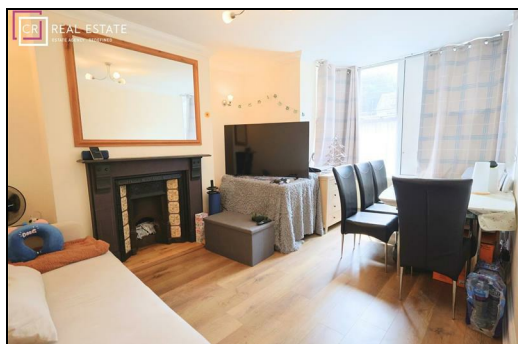
Conveniently located within easy reach of Rochester town centre, local amenities, and excellent transport links, this property is ideal for professionals or couples seeking a well-connected home.

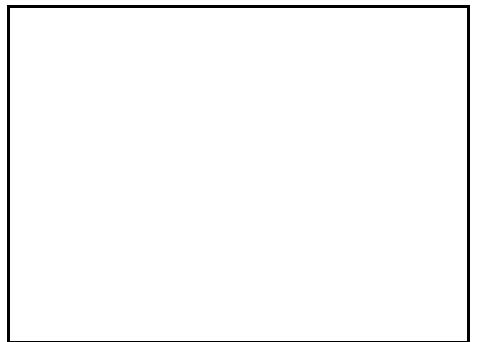
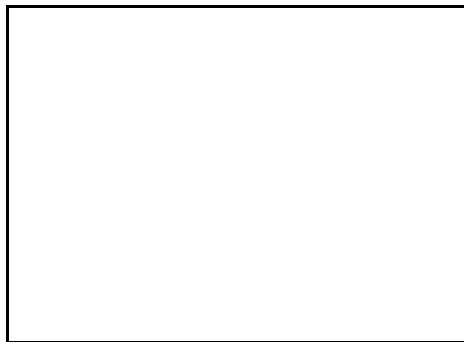
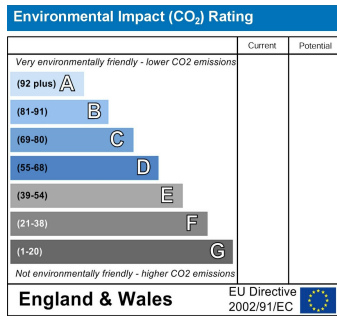
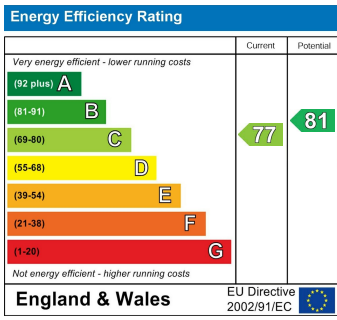
Further benefits include allocated parking and gas central heating.

CR Real Estate are part The Ombudsman Redress Scheme and are a member of the Propertymark Client Money Protection Scheme. Tenant deposits are protected by the Tenancy Deposit Scheme. For more information, please contact us.

Client Money Protection is provided by: Client Money Protect. Scheme Ref: CMP004209

Independent redress is provided by: The Property Ombudsman (TPO). Membership Number: E01687





ESTATE AGENCY : REDEFINED

