

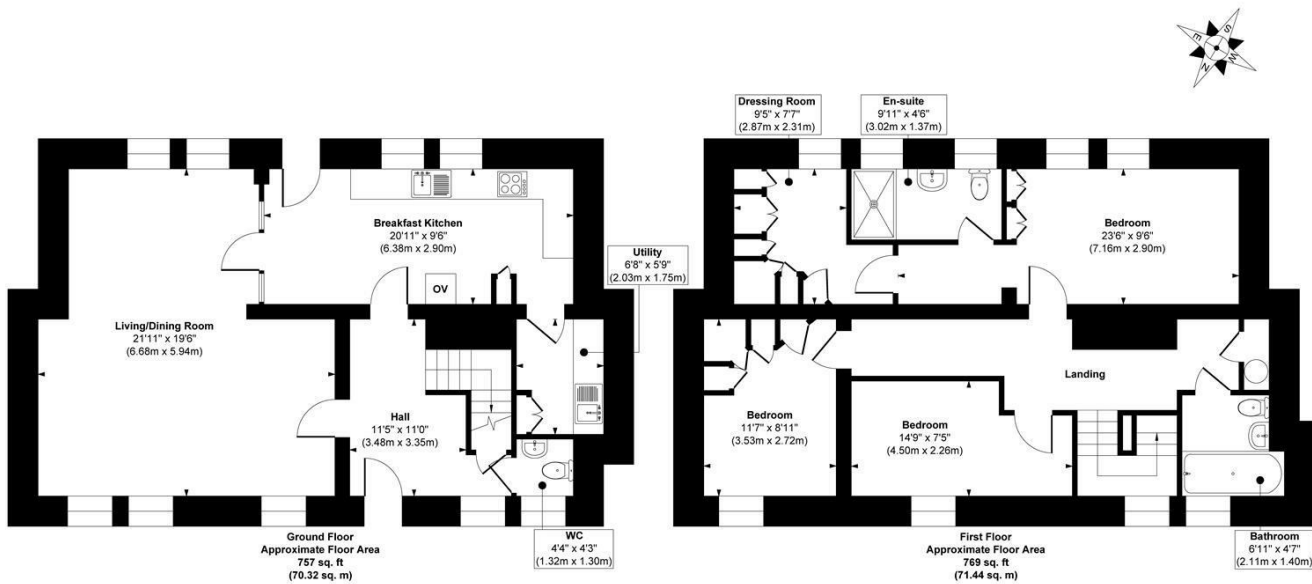
BUTTERWICK NORWOOD DRIVE
ILKLEY, LS29 6GE

£599,950
FREEHOLD

Prepare to be impressed. This exceptional Grade II listed home within the prestigious High Royds Estate seamlessly combines breathtaking period features with high-end contemporary design.

MONROE

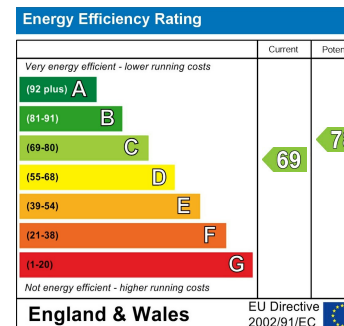
SELLERS OF THE FINEST HOMES



Approx. Gross Internal Floor Area 1526 sq. ft / 141.76 sq. m

Illustration for identification purposes only, measurements are approximate, not to scale.

Copyright © Show Home.



Agents Note: Whilst every care has been taken to prepare these particulars, they are for guidance purposes only. All measurements are approximate and are for general guidance purposes only and whilst every care has been taken to ensure their accuracy, they should not be relied upon and potential buyers/tenants are advised to recheck the measurements

Guiseley Sales
3a Oxford Road
Guiseley
Leeds
LS20 9AS

james@monroestateagents.com
monroestateagents.com

MONROE

SELLERS OF THE FINEST HOMES