



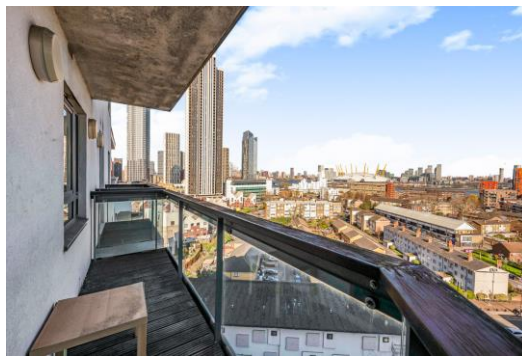
City Tower

3 Limeharbour, E14

Asking Price £500,000

A very spacious 1018sq ft 2 bed 2 bath 10th floor apartment in the modern & well-located City Tower development. The apartment offers Easterly views towards the river & O2 Centre along with 24 hour concierge & secure parking. Offered chain free.

CHESTERTONS



City Tower

3 Limeharbour, E14

- Well located modern block.
- 24 hour concierge.
- Secure parking space.
- Walking distance to Crossharbour DLR.
- Offered chain free.



A very spacious 1018sq ft 2 bed 2 bath 10th floor apartment in the modern & well-located City Tower development. The apartment offers Easterly views towards the river & O2 Centre, & benefits from a quiet aspect since it faces away from the DLR.

City Tower is conveniently-located within 750 metres of Canary Wharf, & within 150 metres of Crossharbour DLR Station for easy access to Canary Wharf & The City. The development benefits from 24 hour portorage & a private communal garden for residents. Also nearby are the various amenities: takeaways, restaurant, & pub on Pepper Street, as well as an Asda superstore & numerous street food stalls around Skylines Village.

Secure parking is included & the property is offered chain-free.

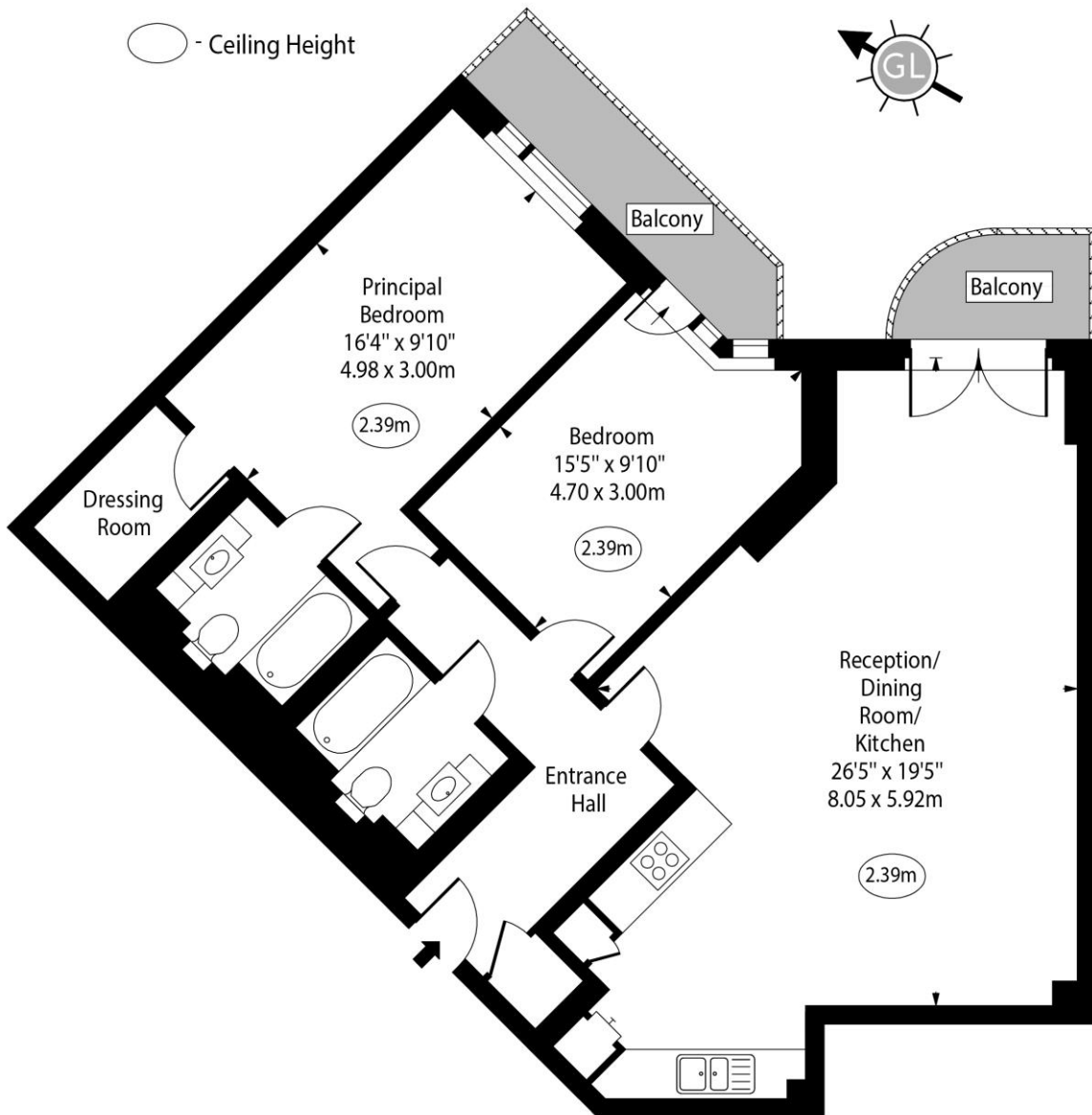
Tenure: Leasehold – 105 years remaining approx.
Service Charge: £8,174pa approx
Ground Rent: £600pa doubling every 25 years of the term
Local Authority: Tower Hamlets
Council Tax Band: E

Score	Energy rating	Current	Potential
92+	A		
81-91	B	81 B	82 B
69-80	C		
55-68	D		
39-54	E		
21-38	F		
1-20	G		

Chestertons Canary Wharf & Greenwich Sales

Harbour Island
 28 Harbour Exchange Square
 London
 E14 9GE
 canarywharf@chestertons.co.uk
 020 7510 8300
 chestertons.co.uk

City Tower,
Limeharbour, E14



Tenth Floor

Approx Gross Internal Area 1018 Sq Ft - 94.57 Sq M

Every attempt has been made to ensure the accuracy of the floor plan shown. However, all measurements, fixtures, fittings, and data shown are approximate interpretations and for illustrative purposes only. Measured according to the RICS. Not To Scale.

www.goldlens.co.uk

Ref. No. 030989M

