

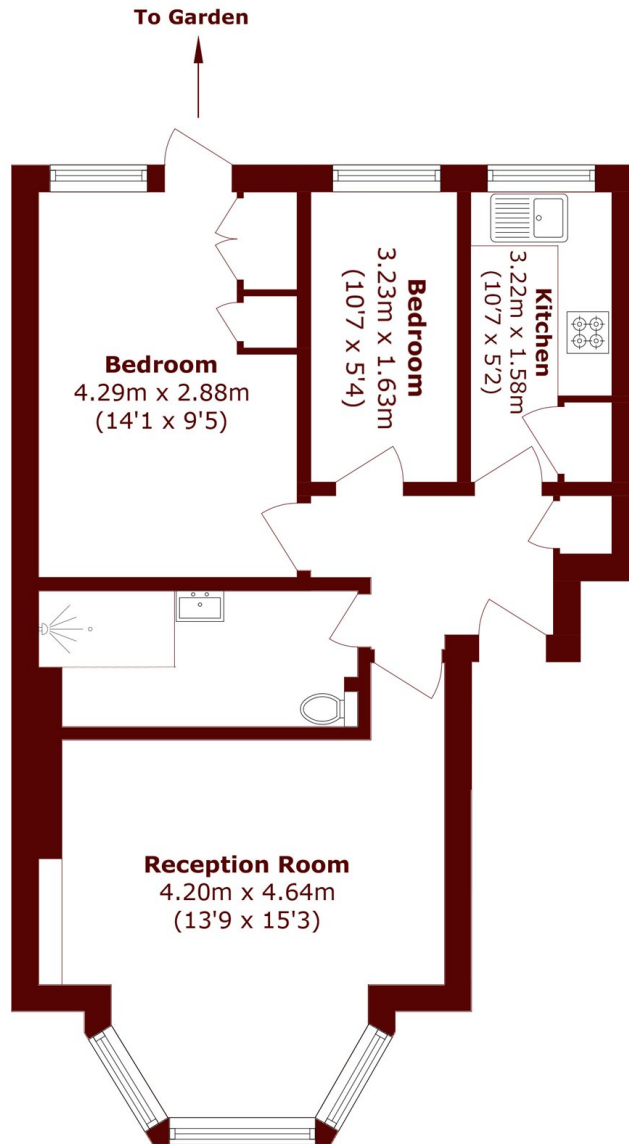


## Sinclair Road, W14

£499,999



- Lower Ground Floor
- Potential To Modernise
- No Onwards Chain
- Private Garden
- Separate Kitchen
- Kensington Olympia



Total area (approx.): 52.0 sq. m (559.7 sq. ft)

## Marsh & Parsons Brook Green

107-109 Shepherds Bush  
Road, London, W6 7LP  
020 7605 7765