



HOME PARK MILL LINK, WD4

£1,250 pcm

If you're on the hunt for a new pad, you won't want to miss Pinnacle House - a stunning collection of contemporary apartments located in a converted office building. Nestled within beautiful landscaped courtyards, these homes offer modern living with a cozy, village-style atmosphere right in the heart of Kings Langley, Hertfordshire. |



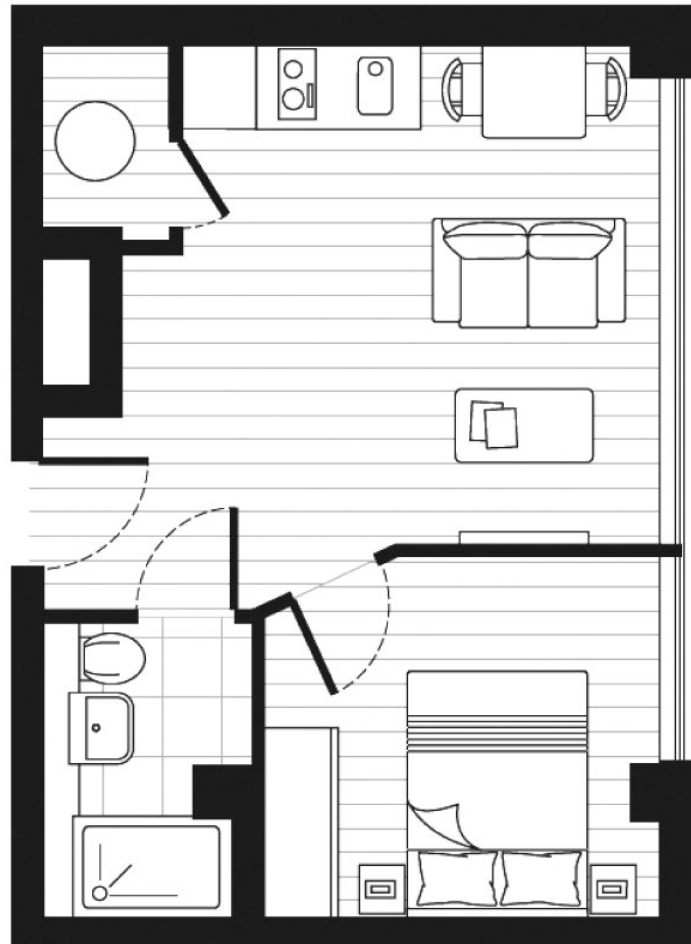
ABOUT THE HOME

If you





1 bedroom apartment



Approximate gross internal area: 344 sq ft / 31.9 sq m

Whilst every attempt has been made to ensure the accuracy of the floorplan contained here, measurements of doors, windows, rooms and any other items are approximate. No responsibility is taken for any error, omission, or mis-statement. This plan is for illustrative purposes only and should be used as such by any prospective purchaser. The services, systems and appliances shown have not been tested and no guarantee as to their operability or efficiency can be given.
© Copyright LiFE Residential 2021.

LiFE RESIDENTIAL

71 Drayton Park, London, N5

1BF

Sales: 020 3838 8666

Lettings: 020 7359 4488

Energy Rating: D. We aim to make our particulars both accurate and reliable. However they are not guaranteed; nor do they form part of an offer or contract. If you require clarification on any points then please contact us, especially if you're traveling some distance to view. Please note that appliances and heating systems have not been tested and therefore no warranties can be given as to their good working order.