



Bassett Row, Southampton SO16 7FS

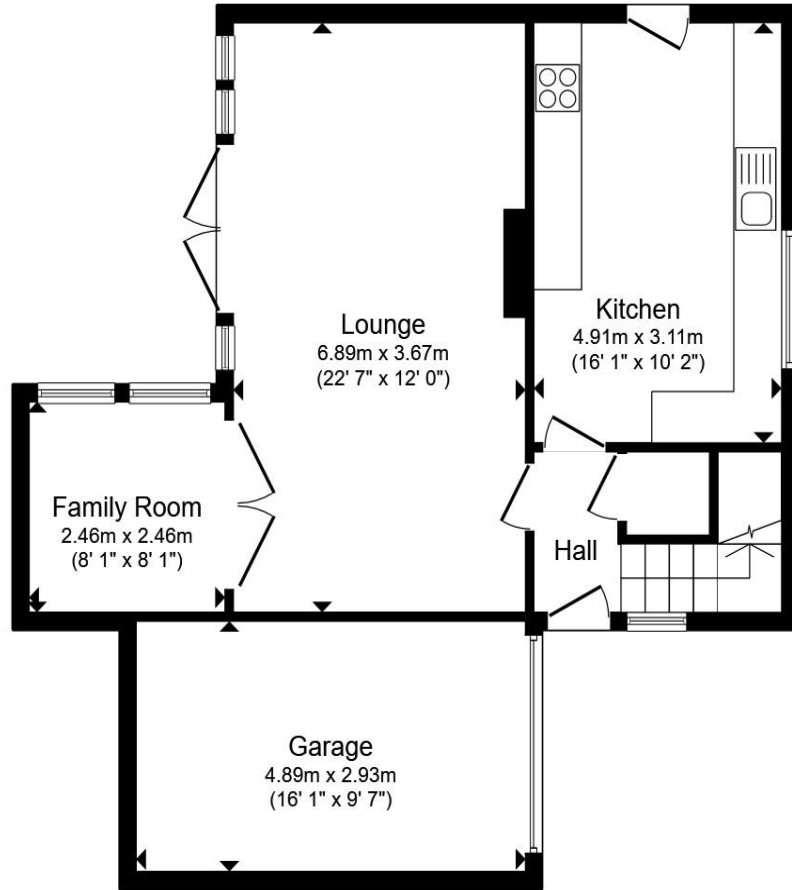
welcome to

Bassett Row, Southampton

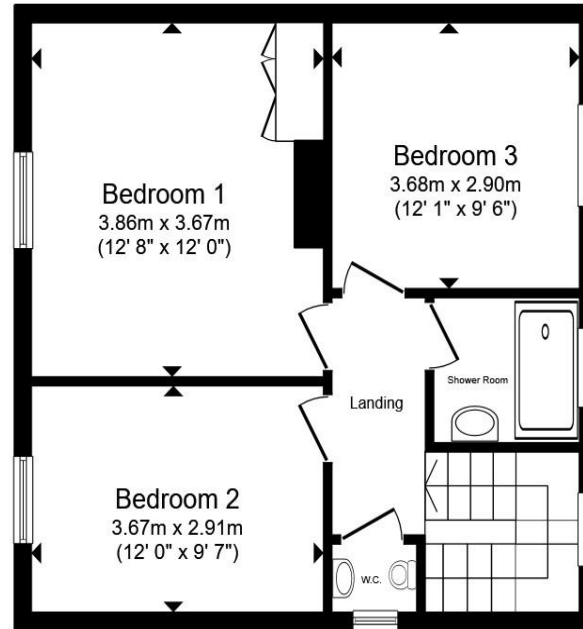
Three Bedroom Detached Home - Bassett Row, Southampton

Situated in the highly sought-after tranquil cul-de-sac of Bassett Row, this beautifully presented three-bedroom detached home offers spacious and versatile accommodation, perfect for modern family living.





Ground Floor



First Floor

Entrance Hall

Storage Cupboard

Lounge

22' 7" x 12' max (6.88m x 3.66m max)

Family Room

8' 1" x 8' 1" (2.46m x 2.46m)

Kitchen

16' 1" x 10' 2" (4.90m x 3.10m)

Garage

16' 1" x 9' 7" (4.90m x 2.92m)

Landing

Bedroom 1

12' 8" x 12' (3.86m x 3.66m)

Bedroom 2

12' x 9' 7" (3.66m x 2.92m)

Bedroom 3

12' 1" x 9' 6" (3.68m x 2.90m)

Shower Room

W.C.

Total floor area 115.8 m² (1,246 sq.ft.) approx

This floor plan is for illustrative purposes only. It is not drawn to scale. Any measurements, floor areas (including any total floor area), openings and orientation are approximate. No details are guaranteed, they cannot be relied upon for any purpose and they do not form part of any agreement. No liability is taken for any error, omission or misstatement. A party must rely upon its own inspection(s). Powered by www.propertybox.io



welcome to

Bassett Row, Southampton

- No Onward Chain
- Sought-After Bassett Location
- Bright & Spacious Lounge with Garden Access & Space for Home Working
- Original Oak Parquet Flooring in Lounge & Hallway
- Modern Wren Kitchen with Built In Washing Machine, Dishwasher & Fridge Freezer

Tenure: Freehold EPC Rating: D
Council Tax Band: D

offers in excess of
£550,000



Please note the marker reflects the postcode not the actual property

view this property online fox-and-sons.co.uk/Property/SOU117893



Property Ref:
SOU117893 - 0006

1. MONEY LAUNDERING REGULATIONS Intending purchasers will be asked to produce identification documentation at a later stage and we would ask for your co-operation in order that there is no delay in agreeing the sale. 2. These particulars do not constitute part or all of an offer or contract. 3. The measurements indicated are supplied for guidance only and as such must be considered incorrect. Potential buyers are advised to recheck measurements before committing to any expense. 4. We have not tested any apparatus, equipment, fixtures or services and it is in the buyers interest to check the working condition of any appliances. 5. Where an EPC, or a Home Report (Scotland only) is held for this property, it is available for inspection at the branch by appointment. If you require a printed version of a Home Report, you will need to pay a reasonable production charge reflecting printing and other costs. 6. We are not able to offer an opinion either written or verbal on the content of these reports and this must be obtained from your legal representative. 7. Whilst we take care in preparing these reports, a buyer should ensure that his/her legal representative confirms as soon as possible all matters relating to title including the extent and boundaries of the property and other important matters before exchange of contracts.


fox & sons



02380 225155



Southampton@fox-and-sons.co.uk



32 - 34 London Road, SOUTHAMPTON,
Hampshire, SO15 2AG



fox-and-sons.co.uk