

Wakerley Road, Evington

£430,000

An extended FOUR BEDROOM DETACHED family home offering versatile accommodation arranged over two floors. Externally, the property benefits from well-maintained gardens and off-road parking.

Council Tax band: D

Tenure: Freehold

Energy Efficiency Rating: TBC





Entrance Lobby

With double glazed window to the front elevation.

Ground Floor WC

With double glazed window to the front elevation, low-level WC, wash hand basin, part tiled walls, plumbing for washing machine.

Entrance Hall

With oak floor, dado rail, stairs to first floor, radiator.

Lounge 19' 0" x 14' 0" (5.79m x 4.26m)

With double glazed windows to the rear elevation, oak floor, living flame gas fire with surround and hearth, ceiling coving, ceiling cornice, TV point, two column radiators.

Dining Room 15' 9" x 8' 0" (4.81m x 2.44m)

With double glazed window to the front elevation, oak floor, fire surround and hearth, dado rail, ceiling coving, radiator.



Dining Kitchen 25' 3" x 7' 8" (7.69m x 2.34m)

With double glazed windows to the front, rear and side elevations, majority tiled floor, stainless steel sink and drainer, wall units, part tiled walls, ceiling coving, spotlights, radiator.

First Floor Landing

With loft access, radiator.

Bedroom One 17' 8" x 8' 0" (5.38m x 2.45m)

Maximum measurement. With double glazed window to the rear elevation, radiator, spotlights, door leading to en-suite.

En-Suite 8' 6" x 7' 4" (2.59m x 2.23m)

With double glazed window to the rear elevation, ceramic tiled floor, shower cubicle, low-level WC, wash hand basin, part tiled walls, ladder towel rail/radiator.

Bedroom Two 11' 9" x 9' 7" (3.57m x 2.93m)

With double glazed window to the rear elevation, built-in wardrobes with box cupboards over and bedside tables, radiator.

Bedroom Three 12' 4" x 8' 2" (3.76m x 2.49m)

With double glazed window to the rear elevation, built-in wardrobes with box cupboards over, radiator.

Bedroom Four 8' 10" x 6' 0" (2.70m x 1.82m)

With two double glazed windows to the front elevation, built-in wardrobes, spotlights, radiator.

Shower Room 7' 7" x 5' 7" (2.31m x 1.71m)

With double glazed window to the front elevation, shower cubicle, low-level WC, wash hand basin with storage below, part tiled walls, radiator with towel rail.

Front Garden

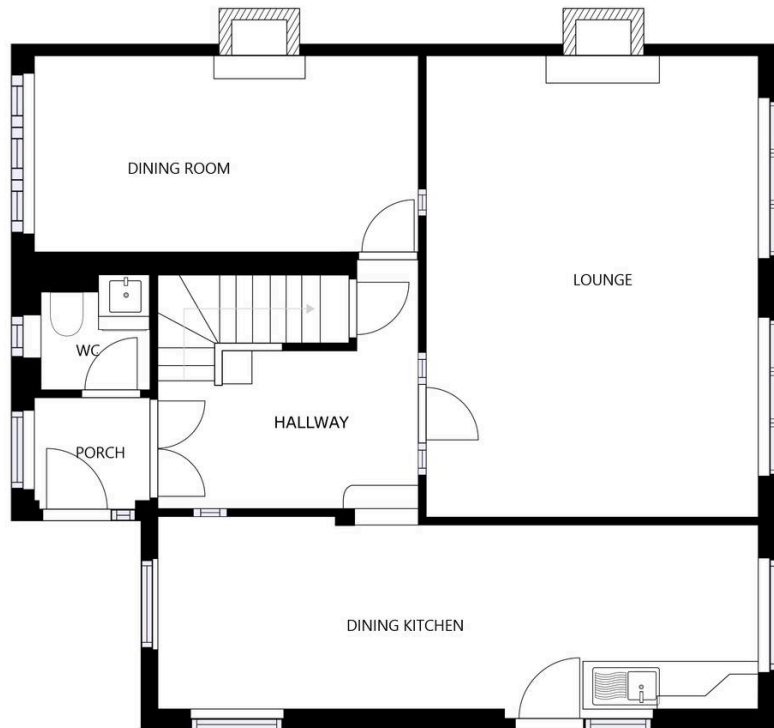
With lawn area, driveway, double gates to the rear garden.

Rear Garden

With paved patio seating area, lawn, fenced perimeter.

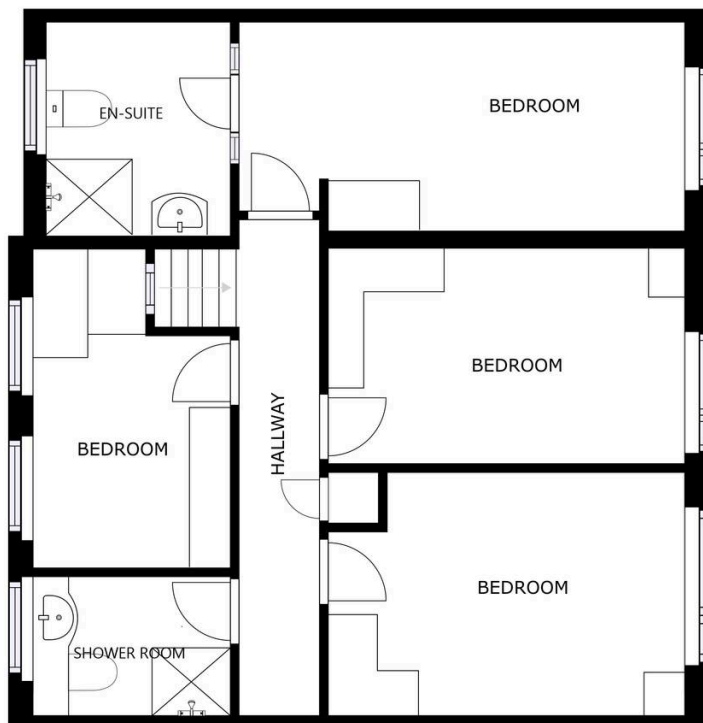
Driveway

For approx 1 vehicle.



FLOOR 1

SIZES AND DIMENSIONS ARE APPROXIMATE, ACTUAL MAY VARY.



FLOOR 2

SIZES AND DIMENSIONS ARE APPROXIMATE, ACTUAL MAY VARY.



We'll keep you moving...



We must inform all prospective purchasers that the measurements are taken by an electronic take and are provided as a guide only and they should not be used as accurate measurements. We have not tested any mains services, gas or electric appliances, or fixtures and fittings mentioned in these details, therefore, prospective purchasers should satisfy themselves before committing to purchase. Intending purchasers must satisfy themselves by inspection or otherwise to the correctness of the statements contained in these particulars. Knightsbridge Estate Agents (nor any person in their employment) has any authority to make any representation or warranty in relation to the property. The floor plans are not to scale, and are intended for use as a guide to the layout of the property only. They should not be used for any other purpose. We are required by law to conduct anti-money laundering checks on all those selling or buying a property. Whilst we retain responsibility for ensuring checks and any ongoing monitoring are carried out correctly, the initial checks are carried out on our behalf by Lifetime Legal who will contact you once you have agreed to instruct us in your sale or had an offer accepted on a property you wish to buy. The cost of these checks is £60 (incl. VAT), which covers the cost of obtaining relevant data and any manual checks and monitoring which might be required. This fee will need to be paid by you in advance of us publishing your property (in the case of a vendor) or issuing a memorandum of sale (in the case of a buyer), directly to Lifetime Legal, and is non-refundable. We will receive some of the fee taken by Lifetime Legal to compensate for its role in the provision of these checks.