



Chapel Street, St Just TR19

£240,000

2 1 2



- TWO DOUBLE BED COTTAGE
- LOVINGLY RESTORED AND REFURBISHED
- TWO RECEPTION ROOMS WITH STOVES
- ELECTRIC RADIATOR HEATING
- PRIVATE REAR COURTYARD GARDEN
- GOOD SIZE WORKSHOP WITH POWER
- SHORT WALK TO TOWNS MAIN SQUARE
- NO ONWARD CHAIN / CHAIN FREE
- EPC - F
- COUNCIL TAX BAND - A



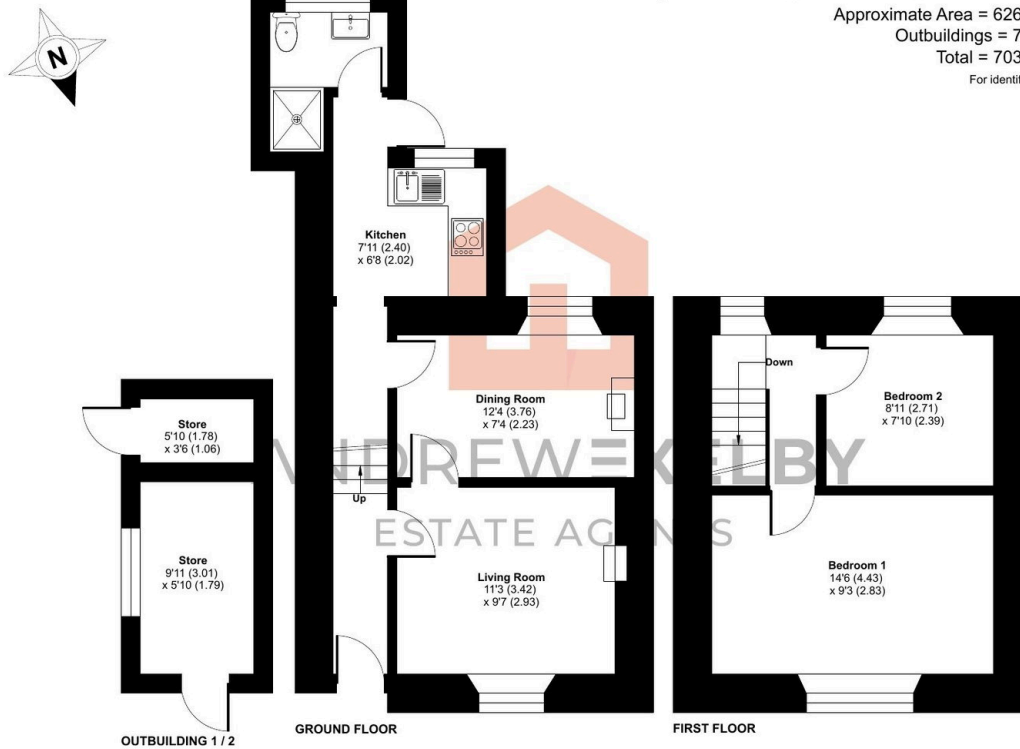
Chapel Street, St. Just, Penzance, TR19

Approximate Area = 626 sq ft / 58.1 sq m

Outbuildings = 77 sq ft / 7.1 sq m

Total = 703 sq ft / 65.2 sq m

For identification only - Not to scale



Floor plan produced in accordance with RICS Property Measurement 2nd Edition, incorporating International Property Measurement Standards (IPMS2 Residential). © nichecom 2026. Produced for Andrew Exelby Estate Agents. REF: 1453685

**TWO DOUBLE BED COTTAGE ** TWO RECEPTIONS ** REAR COURTYARD GARDEN **
WORKSHOP WITH POWER ** RESTORED & REFURBISHED ** NO ONWARD CHAIN**