



88 Peatey Court, Princes Gate, High Wycombe

£215,000



88 Peatey Court Princes Gate

High Wycombe, Buckinghamshire

A well presented top floor apartment located within this popular development close to High Wycombe town centre. The property enjoys far reaching views towards the Rye park and woodland beyond. Entrance hall, Sitting room, Fitted kitchen, Two double bedrooms, Bathroom, Double glazing, Electric heating, Allocated parking, Communal gardens. Viewing highly recommended. NO CHAIN. Tenure: Leasehold

Entrance Hall

Storage heater, security entry phone, access to large loft space

Sitting Room

Storage heater, Dimplex heater, window to front

Kitchen

Fitted with a range of eye and base level units incorporating stainless steel sink unit with mixer tap and drainer, built in Ariston oven, fitted four ring hob with extractor over, built in fridge, built in freezer, space and plumbing for washing machine, cupboard housing hot water cylinder and storage, part tiled walls, window to rear

Bedroom 1

Fitted double wardrobe, Dimplex heater, window to front





Bedroom 2

Dimplex heater, window to front

Bathroom

White suite comprising panelled bath with rainfall shower over, mixer tap and shower attachment, Low level WC., wash hand basin, part tiled walls, heated towel rail, fitted mirrored storage cupboard, fitted mirror, window to rear

Communal gardens

The communal gardens to the front are laid to lawn

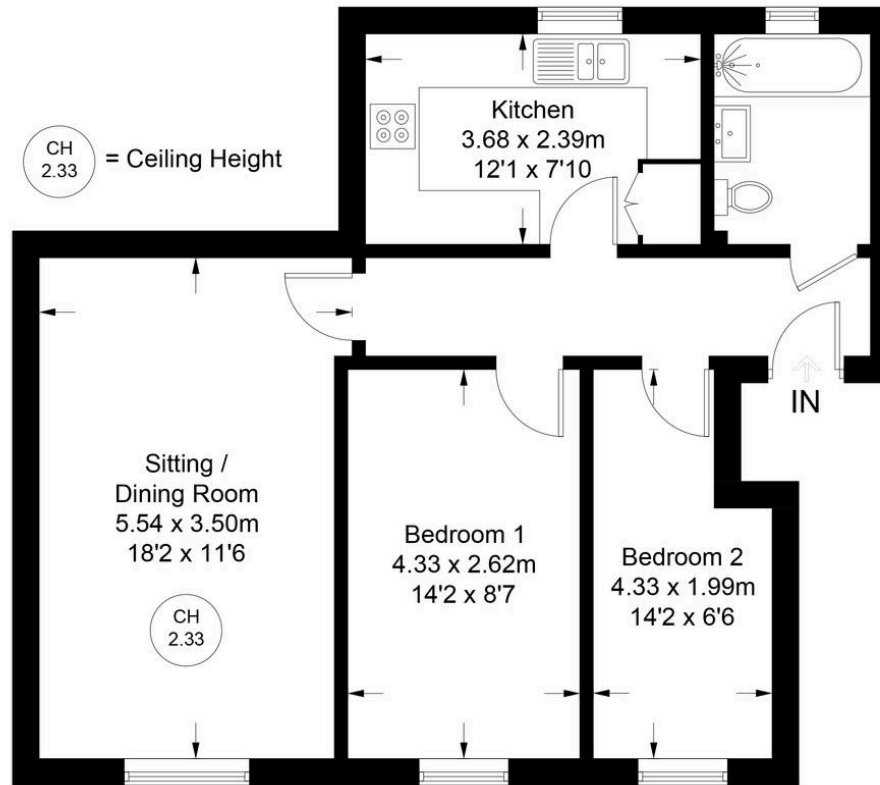
Parking

There is one allocated parking space.





Approximate Gross Internal Area
60.3 sq m / 649 sq ft



Third Floor

Floor Plan produced for Robertsons by Media Arcade Ltd ©.

Illustration for identification purposes only. Window and door openings are approximate. Whilst every attempt is made to assure accuracy in the preparation of this plan, please check all dimensions, shapes and compass bearings before making any decisions reliant upon them.



Robertsons