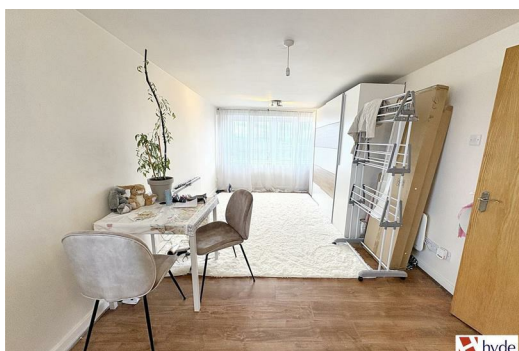




**1002 City View, Highclere Avenue  
Salford M7 4ZU**

**£1,100 PCM**

Hyde Estates are pleased to offer this two bedroom 10th floor apartment to let. The property is well presented throughout and serviced by a lift to all floors. Benefits from gated residents parking, fabulous panoramic views and is ideally located close to public transport links into the city for commuters or those wanting to enjoy the many amenities this area has to offer. Offered unfurnished and available now.





Accommodation

Comprising; entrance hall with door entry phone and utility cupboard, open plan living area with excellent views over Manchester. The fitted kitchen features an integral electric oven, hob, overhead extractor hood and seperate fridge and freezer. The bathroom is fully tiled and features a bath with electric shower, glass shower screen, low level WC and pedestal wash basin. Both bedrooms can accommodate a double bed and freestanding bedroom furniture.

Room Measurements

- Living Room: 16'8" x 10'
- Kitchen: 12'10" x 6'6"
- Bedroom 1: 13'11" x 9'3"
- Bedroom 2: 13'7" x 7'5"
- Bathroom: 6'11" x 6'4"

Gardens

Tended communal gardens with gated residents parking.

Additional Information

The property is serviced by wall mounted electric heaters and uPVC double glazing.

Council Tax

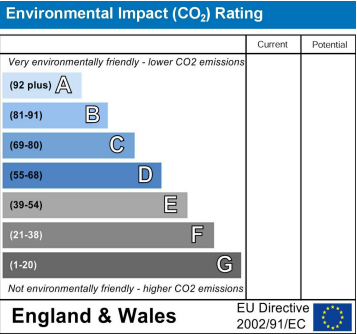
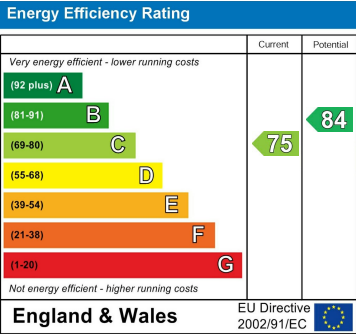
Salford City Council, Band A.

Viewings

All viewings to be arranged via Hyde Estate and Letting Agents 0161 773 4583.

Disclaimer

The information and images provided in this property advertisement are intended for guidance purposes only. While we make every effort to ensure the accuracy of the details, we strongly recommend that interested parties view the property in person to confirm the property's condition and suitability for their specific requirements.



1 St. Margarets Road, Prestwich, Manchester, M25 2QB