



DANIEL GREEN

exp<sup>®</sup> UK

@ daniel.green@exp.uk.com

🌐 danielgreen.exp.uk.com

📞 020 3930 3550 / 07541 999 544

**1a Northaw Close,**  
**£1,675PCM (Deposit: £1,932)**

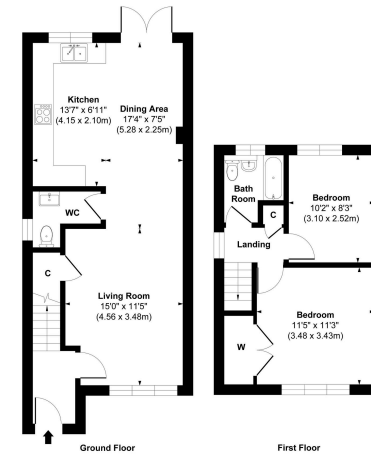
 2  1  1



Tax Band: C Furnished: Unfurnished

A beautifully refurbished end-of-terrace home in the popular Woodhall Farm area, offering stylish, move-in-ready living with a sunny private garden. Perfect for professional tenants or a small family seeking a high-quality home in a well-connected location





Approx. Gross Internal Floor Area 797 sq. ft / 74.06 sq. m.  
 This floorplan is intended for illustrative purposes only and should be used as a general guide. All measurements are approximate and not to scale.  
 Exact dimensions should be independently verified.

