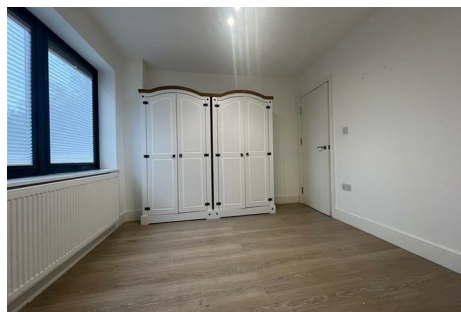


# RAINBOW REID



ESTATE AGENTS || LETTING AGENTS || PROPERTY MANAGEMENT



## 36-40 Updown Hill Windlesham, Surrey, GU20 6DX

Welcome to this charming property located in the picturesque area of Updown Hill, Windlesham, Surrey. This delightful flat boasts a spacious reception room, perfect for relaxing or entertaining guests. With two bedrooms, there is ample space for a small family, guests, or even a home office. The property features a modern bathroom, ensuring your comfort and convenience.

Situated in a serene location, this flat offers a peaceful retreat from the hustle and bustle of everyday life. The location is ideal for those seeking a tranquil environment while still being within easy reach of local amenities and transport links.

One of the highlights of this property is the parking space available for one vehicle, providing you with the convenience of off-street parking in this sought-after area.

Don't miss the opportunity to make this lovely flat your new home. Contact us today to arrange a viewing and experience the charm of Updown Hill living in Windlesham, Surrey.

NB pictures are for illustration purposes and may not be the actual unit being offered, they are displayed to give an idea of spec and finish of the apartments.

**£1,475 PCM**

# 36-40 Updown Hill

Windlesham, Surrey, GU20 6DX



**Directions**





# Floor Plan

These particulars, whilst believed to be accurate are set out as a general outline only for guidance and do not constitute any part of an offer or contract. Intending purchasers should not rely on them as statements of representation of fact, but must satisfy themselves by inspection or otherwise as to their accuracy. No person in this firm's employment has the authority to make or give any representation or warranty in respect of the property.

