



 3  2  1
Redlands Road, Penarth
offers over £525,000

 **peter
alan**

02920 703799
penarth@peteralan.co.uk



About the property

A very well presented, characterful three double bedroom semi-detached house in a popular location within Penarth. Located close to a number of schools including Fairfield, Pen-y-Garth, St Cyres and St Josephs, the property has been improved and maintained to a high standard over the years.

Briefly comprising of an entrance porch, entrance hall, two reception rooms, kitchen and cloakroom downstairs. Upstairs offers three double bedrooms and a family bathroom. It further benefits from a driveway for multiple vehicles and an enclosed rear garden.

Conveniently located to Penarth Town Centre, Cardiff City Centre and the M4 motorway and accessed by local public transport allowing for easy commuting and making it an ideal family home.

Accommodation

Entrance Porch

Enter via UPVC front door, tiled floor, internal door to entrance hall.

Entrance Hall

Carpet, doors to dining room, lounge, kitchen and cloakroom. Stairs to first floor.

Lounge

13' 9" x 11' 9" (4.19m x 3.58m)
Doors to rear garden, carpet, radiator, fireplace.

Dining Room

12' 9" x 11' 10" (3.89m x 3.61m)
Bay window to front, carpet, radiator, fireplace.

Kitchen

9' 10" x 9' 5" (3.00m x 2.87m)
Door to rear garden and window to rear, wall and base units, sink and drainer, integrated oven microwave hob and extractor, space for fridge, freezer and washing machine. Tiled floor and tiled splashback.

Cloakroom

Window to side, wc, sink, tiled floor.

Landing

Carpet, doors to bedrooms and family bathroom.

Bedroom One

11' 10" x 11' (3.61m x 3.35m)
Window to front, carpet, radiator.





Bedroom Two

13' 9" x 11' 9" (4.19m x 3.58m)
Window to rear, carpet, radiator.

Bedroom Three

11' 6" x 9' 6" (3.51m x 2.90m)
Window to rear, carpet, radiator.

Wc

Window to side, wc, part tiled walls.

Bathroom

Window to front, bath, shower cubicle, sink, heated towel rail, tiled walls.

Outside

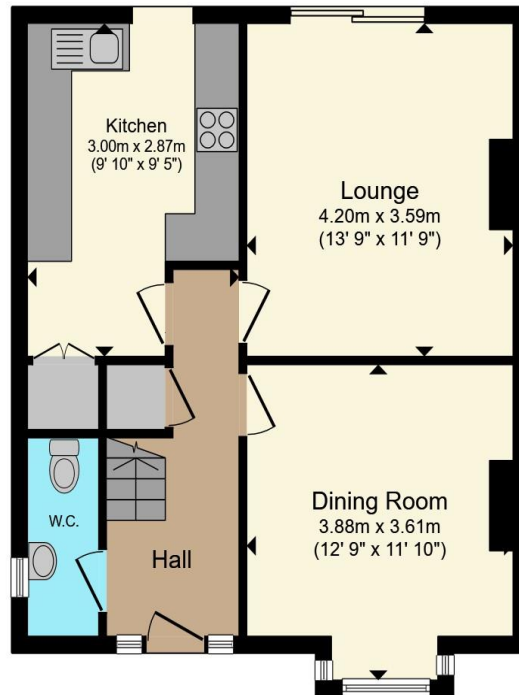
To the front there is a driveway for multiple vehicles and lawned area. To the rear, an enclosed garden laid to lawn with a patio.



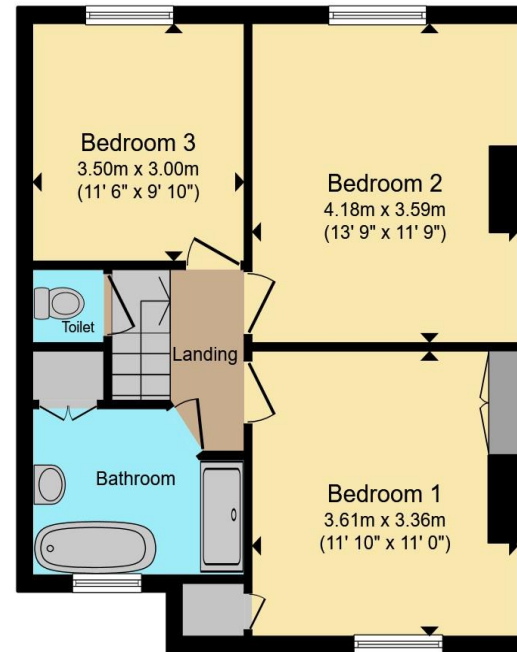


02920 703799

penarth@peteralan.co.uk



Ground Floor



First Floor

Total floor area 100.9 m² (1,086 sq.ft.) approx

This floor plan is for illustrative purposes only. It is not drawn to scale. Any measurements, floor areas (including any total floor area), openings and orientation are approximate. No details are guaranteed, they cannot be relied upon for any purpose and they do not form part of any agreement. No liability is taken for any error, omission or misstatement. A party must rely upon its own inspection(s). Powered by www.propertybox.io



Important Information

Note while we endeavour to make our sales details accurate and reliable, if there is any point which is of particular interest to you, please contact the office and we will be pleased to confirm the position for you. We have not personally tested any apparatus, equipment, fixtures, fittings or services and cannot verify they are in working order or fit for their purposes. Nothing in these particulars is intended to indicate that carpets or curtains, furnishings or fittings, electrical goods (whether wired or not), Gas fires or light fittings or any other fixtures not expressly included form part of the property offered for sale. This computer generated Floorplan, if applicable, is intended as a general guide to the layout and design of the property. It is not to scale and should not be relied upon for dimensions. Tenure: We cannot confirm the tenure of the property as we have not had access to the legal documents. The buyer is advised to obtain verification from their solicitor or surveyor.

Peter Alan Limited is registered in England and Wales under company number 2073153, Registered Office is Cumbria House, 16-20 Hockliffe Street, Leighton Buzzard, Bedfordshire, LU7 1GN. VAT Registration Number is 500 2481 05. For activities relating to regulated mortgages and non-investment insurance contracts, Peter Alan Limited is an appointed representative of Connells Limited which is authorised and regulated by the Financial Conduct Authority. Connells Limited's Financial Services Register number is 302221. Most buy-to-let mortgages are not regulated.

