



**70 Tanner Street
SE1**

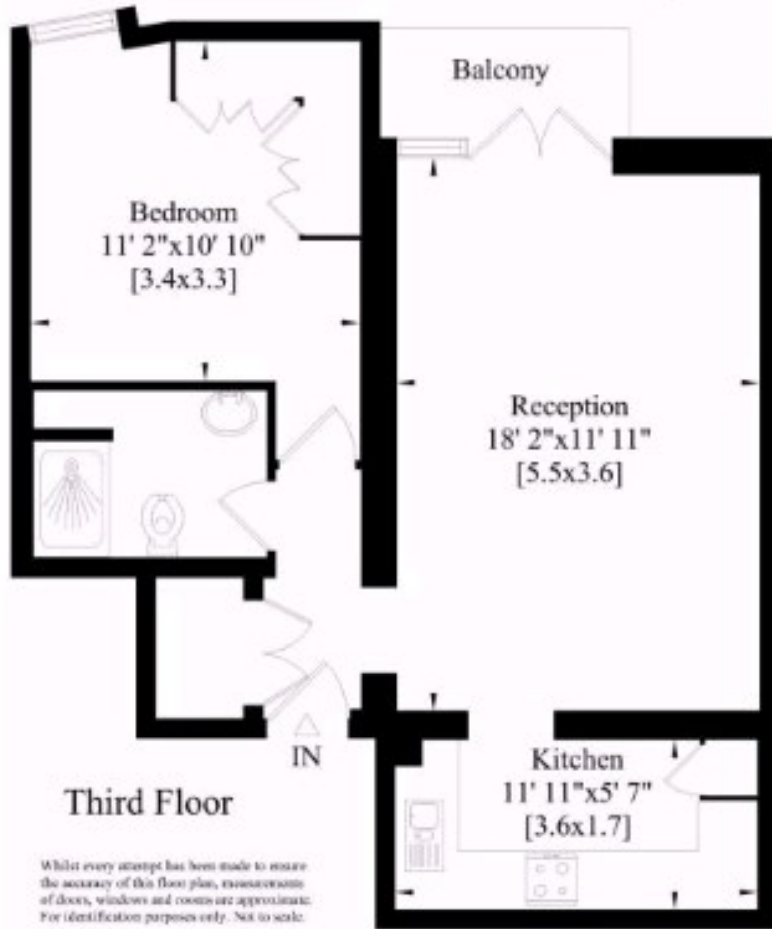
£2,300 PCM

A third floor 515 sq. ft. one bedroom apartment with balcony set within this purpose built block conveniently located on Tanner Street. The property comprises one double bedroom, reception leading to a private south facing balcony, separate kitchen and main bathroom. The development benefits from a concierge and is located within a short walk to Bermondsey Street, Tower Bridge, Shad Thames and London Bridge Station. Offered furnished.

Call the lettings department to reserve a viewing 0207 015 1360.



Florin Court SE1
 Gross Internal Area:
 48 Sq. metres
 515 Sq.feet



Whilst every attempt has been made to ensure the accuracy of this floor plan, measurements of doors, windows and rooms are approximate. For identification purposes only. Not to scale.



Energy Efficiency Rating		Current	Potential
Very energy efficient - lower running costs			
(92 plus) A			
(81-91) B			
(69-80) C			
(55-68) D			
(39-54) E			
(21-38) F			
(1-20) G			
Not energy efficient - higher running costs			
England & Wales		EU Directive 2002/91/EC	

Agents Note: Whilst every care has been taken to prepare these particulars, they are for guidance purposes only. All measurements are approximate and are for general guidance purposes only and whilst every care has been taken to ensure their accuracy, they should not be relied upon and potential buyers/tenants are advised to recheck the measurements

Borough Lettings
 230 Borough High Street
 London
 SE1 1JX

020 7015 1360
 enquiries@leonardleese.com
 www.leonardleese.com

