



Radburn Drive, Coventry, CV7 8HY

**SHELDON
BOSLEY
KNIGHT** LAND AND
PROPERTY
PROFESSIONALS

Property Description

*** AVAILABLE NOW *** This brand new two-bedroom home is located on Radburn Drive, Coventry, offering modern, energy-efficient living in a desirable residential development with convenient access to local amenities and transport links.

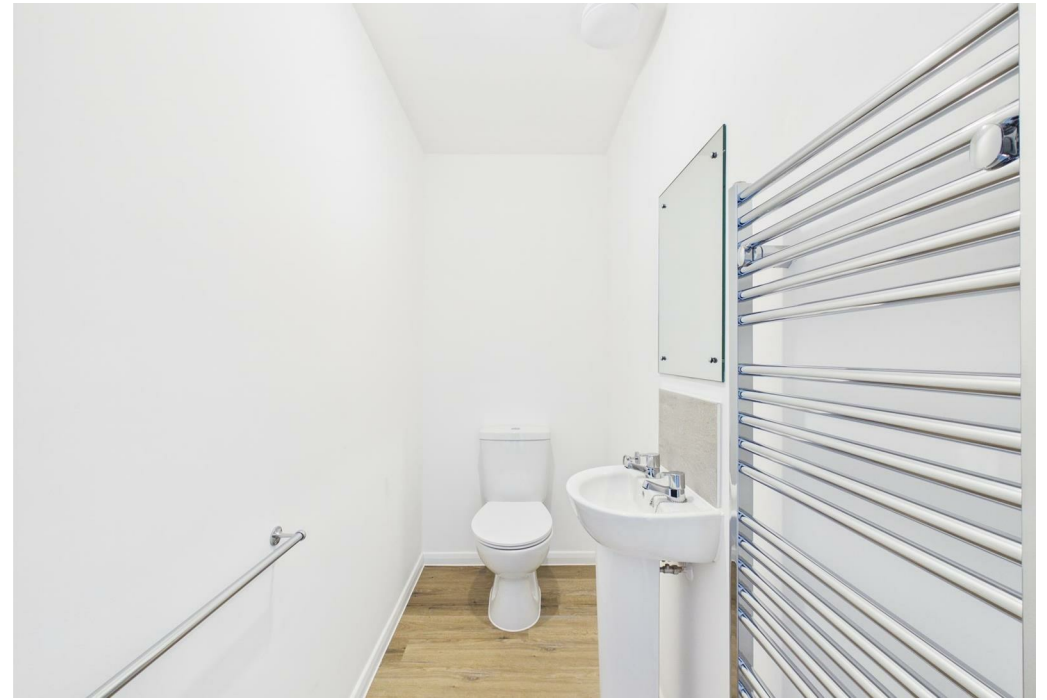
The ground floor comprises a welcoming entrance hallway, a bright and spacious lounge, a modern fitted kitchen/diner, and access to the private rear garden.

To the first floor there are two bedrooms and a family bathroom with bath, shower over, WC and sink.

Externally, the property benefits from a private driveway, rear garden, and modern energy-efficient features including an air source heat pump, electric vehicle charging point, and double glazing.

Offered UNFURNISHED. Council Tax Band TBC. Energy Rating TBC.







Key Features

- Available Now - ALTERNATIVE DEPOSIT OPTION AVAILABLE
- Kersley, Coventry
- Two Bedrooms
- Mid Terrace New Home
- Unfurnished
- Private Driveway
- Council Tax Band TBC
- Energy Rating TBC (A or B)
- PETS WELCOMED

£1,300 Per Month