

Symonds
& Sampson

The White House

Harepath Road, Seaton, Devon

The White House

Harepath Road
Seaton
Devon EX12 2SX

This exceptional detached home offers spacious and stylish living with accommodation over three floors and long-distance countryside views towards Axmouth.



- Master bedroom with balcony & En suite
 - Modern fitted kitchen
- Basement with hot tub, sauna and laundry
 - Far reaching countryside views
 - Garage & ample off road parking



Guide Price **£599,999**

Freehold

Axminster Sales
01297 33122
axminster@symondsandsampson.co.uk



THE PROPERTY

An attractive and unique modern detached property which was constructed in 1997, designed and executed with imagination and flair having far reaching views to the front.

ACCOMMODATION

A beautifully maintained and thoughtfully upgraded residence located in the Coastal resort of Seaton in the county of Devon. This spacious home offers three double bedrooms, along with a versatile bonus room featuring a large closet and a hideaway bed – ideal for use as a guest room or home office. The property also includes a cloakroom, two bathrooms, one conveniently located in the principal bedroom, as well as a formal living room, and a dining area in the kitchen as well as a basement on the lower level.

The kitchen is well appointed with countertops, a central island fitted with an induction hob, an Alpha Range for cooking, heating, and hot water, along with abundant cabinets to meet all your culinary needs. An eye level oven, microwave oven, fridge and freezer, a ceramic sink and drainer with waste disposal unit system are also included. The basement is currently being used as a gym, as well as a laundry area, fitted with a sauna, hot tub and has considerable storage space.

The principal bedroom on the first floor has access to a balcony where you can enjoy the morning sun along with a recently upgraded and well-appointed ensuite and a dressing area with built in wardrobes. A refitted stylish bathroom services the remainder of the bedrooms on this floor.

OUTSIDE

Externally, the rear garden offers a spacious and well-balanced layout with both a patio, decked seating and lawn areas creating an ideal setting for al fresco dining, and relaxing. There is also a raised pond creating a tranquil environment.

At the front of the property, the driveway provides ample parking, bordered with high hedging combining practicality with a sense of privacy.

LOCAL AUTHORITY

East Devon District Council Blackdown House, Border Road, Heathpark Industrial Estate, Honiton, EX14 1EJ.
Tel : 01404 515616 Council Tax Band F.

SITUATION

Seaton is a popular coastal resort on the Jurassic Coast, with its tourist tramway and mile-long pebbled beach. The town itself has many small independent shops, doctors'

surgeries, and two supermarkets. The area boasts a wealth of activities including golf, tennis, bowls, and sailing along with stunning walks and scenery along the East Devon coastal path. There are good secondary schools nearby along with the renowned Colyton Grammar School, which is just 3 miles inland. The county town of Exeter, with its regional airport, is some 20 miles to the west, and the mainline rail link to London (Waterloo) is at Axminster, approximately 5 miles in distance.

SERVICES

All mains services connected.

Mobile Network Coverage: There is mobile coverage available in the area. Please refer to Ofcom's website for further details.

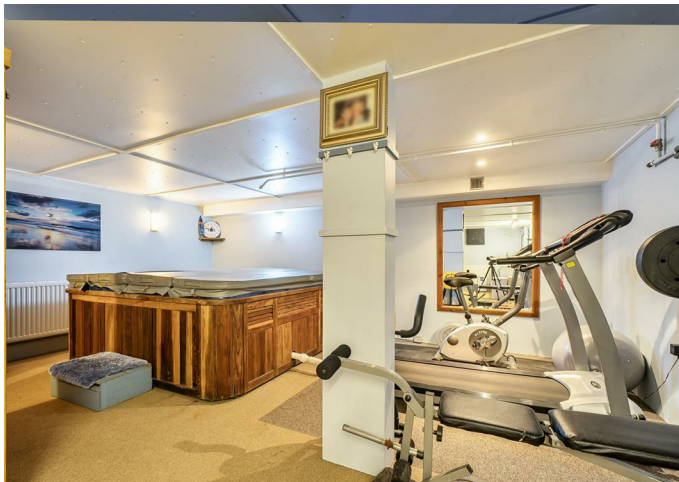
Broadband: Ultrafast broadband is available. Source- Ofcom.org

DIRECTIONS

<https://w3w.co/allies.dreams.mint>

MATERIAL INFORMATION

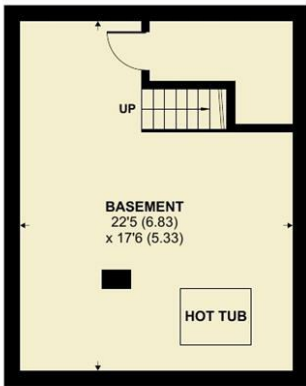
- 1.) The vendors are buying on and have found a suitable property, but should this property receive an offer prior to selling their own they will need time to find another.
- 2.) The property is at very low risk of flooding from both rivers & seas and surface water. Source- Gov.uk



Energy Efficiency Rating		Current	Potential
Very energy efficient - lower running costs	A		
Energy efficient - lower running costs	B		
Decent energy efficiency - lower running costs	C		
Some energy efficiency - lower running costs	D		
Less energy efficient - higher running costs	E		
Very low energy efficiency - high running costs	F		
Low energy efficiency - high running costs	G		
England & Wales		EU Directive 2002/91/EC	72

The White House, Harepath Road, Seaton

Approximate Area = 2188 sq ft / 203.2 sq m
 Garage = 195 sq ft / 18.1 sq m
 Total = 2383 sq ft / 221.3 sq m
 For identification only - Not to scale



LOWER GROUND FLOOR



GROUND FLOOR



FIRST FLOOR

Floor plan produced in accordance with RICS Property Measurement 2nd Edition, Incorporating International Property Measurement Standards (IPMS2 Residential). © nichecom 2026. Produced for Symonds & Sampson. REF: 1451265



Axm/AR/30.4.26



01297 33122

axminster@symondsandsampson.co.uk
 Symonds & Sampson LLP
 , Trinity Square,
 Axminster, Devon EX13 5AW



Important Notice: Symonds & Sampson LLP and their clients give notice that they have no authority to make or give any representations or warranties regarding the property. These particulars do not form part of any offer or contract and must not be relied upon as statements of fact. Some descriptions and images may have been AI-assisted; while reviewed for accuracy, interested parties should verify key details through inspection or by contacting our agents. All measurements and distances are approximate. Text, photographs, and plans are for guidance only and may not be comprehensive. It should not be assumed that the property has all necessary planning or regulatory consents, and no services, equipment, or facilities have been tested. No investigations have been made into pollution or contamination; purchasers must make their own enquiries. The property is sold subject to all existing wayleaves, easements, and rights of way (public or private), whether mentioned or not. Vendors are not required to define such rights.