



*Teddington Drive*  
Leybourne Chase | ME19 5FF





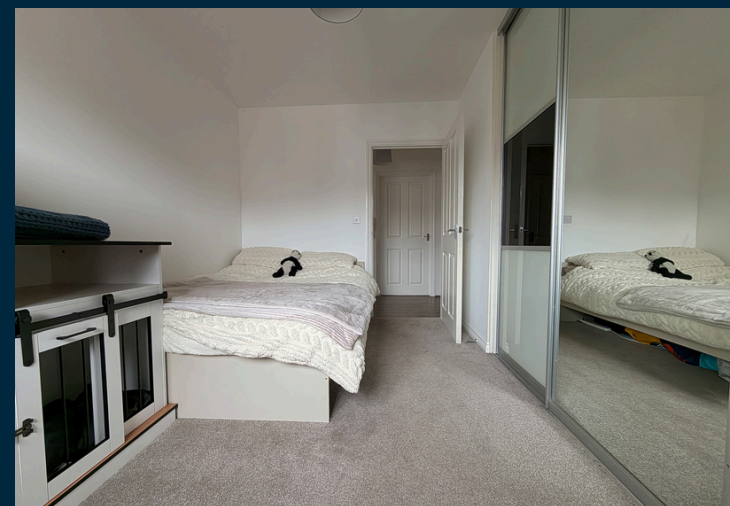




Located in the desirable modern development of Leybourne Chase, West Malling - this lovely, top floor two double bedroom apartment is just one of three homes within this particular building which was built in 2010 by Taylor Wimpey.

The apartment spans just over 580 square feet and is being offered with the wonderful advantage from having no chain attached. A unique feature to this property is that unlike the majority of apartments within the development which have completely open living and kitchen areas, the configuration of this home creates a separate breakfasting kitchen area to the main living space plus there is the additional bonus of a sit out balcony. Both bedrooms are double rooms and there is the distinct advantage from having both a main bathroom and ensuite walk in shower room.

For those that love their outdoor space - the woodland walks, trim trail, nearby playing fields and parkland offer fantastic opportunities to get out and enjoy the fresh air and what better way to treat yourself than taking a short stroll down to 'average doughs' bakery located in the sports pavilion. All on site facilities are within walking distance and just a few minutes drive away is the thriving market town of West Malling with an abundance of amenities, independent retailers, boutiques, restaurants and mainline rail station.



## Second Floor

Entrance Hallway

Lounge - 13'2 x 12'9

Private Sit Out Balcony

Kitchen - 11'7 x 9'5

Bedroom1 - 12'5 x 8'3

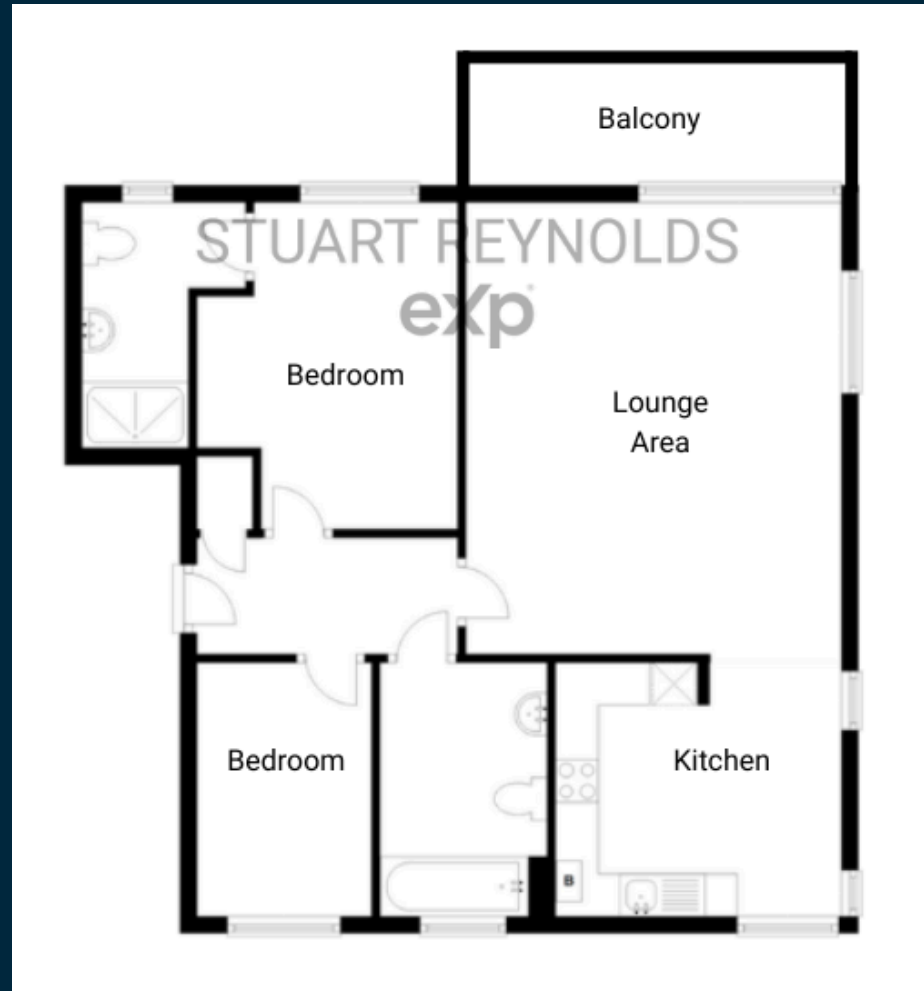
Ensuite Shower Room

Bedroom2 - 9'6 x 6'10

Bathroom

## Outside

Private Allocated Parking







**01732 647009**



@sreynoldsrealestate

[www.stuartreynolds.exp.uk.com](http://www.stuartreynolds.exp.uk.com)