



Burnaby Gardens, London, W4
Guide Price £1,750,000

WHITMAN & CO.

SALES · LETTINGS · COMMERCIAL



An exceptionally spacious and imposing semi-detached period family home totalling over 2700 sqft, located on this prestigious tree-lined residential road in the Grove Park area of Chiswick. The house offers versatile accommodation over four floors with excellent proportions and numerous period features throughout. The accommodation comprises a generous entrance hall, a wonderful 31' double reception room with 3m high ceilings and a bay window, a bright 21' kitchen/breakfast room with doors leading to the garden, a large utility room with its own separate entrance and guest cloakroom, a 55'x35' (at max) private garden with a garden studio/office (19'5x13'5) with ensuite shower room and rear access onto Burnaby Crescent. The first and second floors provide five double bedrooms and three bathrooms with large loft storage areas above. Additionally, on the lower ground floor, there is an office /playroom and a further shower room. There is convenient access to local shops, cafes and restaurants, the Strand-on-the-Green riverside, Chiswick House and Gardens, and Chiswick High Road, with several local schools close by, including OFSTED-rated outstanding Grove Park Primary and Chiswick School. Transport links include Chiswick and Gunnersbury stations (8-9 mins walk), local bus routes and the A4/M4 for routes in and out of London. No onward chain.



Burnaby Gardens, W4

Approximate Gross Internal Area

257.56 sq m / 2772 sq ft

(Including Studio / Office)

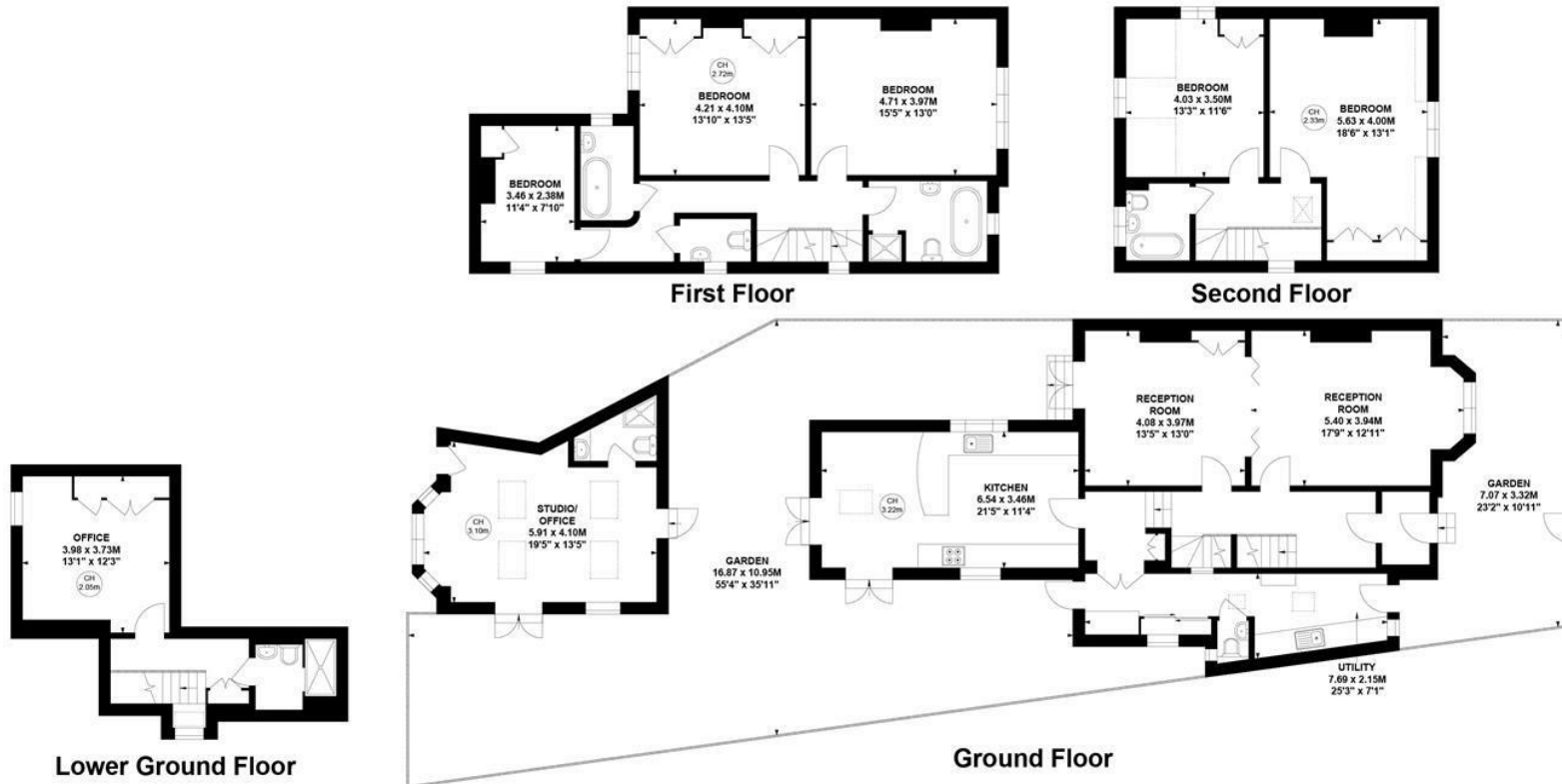
Studio / Office

23.75 sq m / 256 sq ft



Key :

CH - Ceiling Height



Not to scale, for guidance only and must not be relied upon as a statement of fact.

All measurements and areas are approximate only

- Exceptional spacious semi-detached family home
- Versatile accommodation over four floors
- Sought after residential road

- In excess of 2700 sqft
- Private garden with large garden office/studio
- No onward chain

Tenure - Freehold
Local Authority - Hounslow
Council Tax - Band G

